

2019

Community Health Needs Assessment



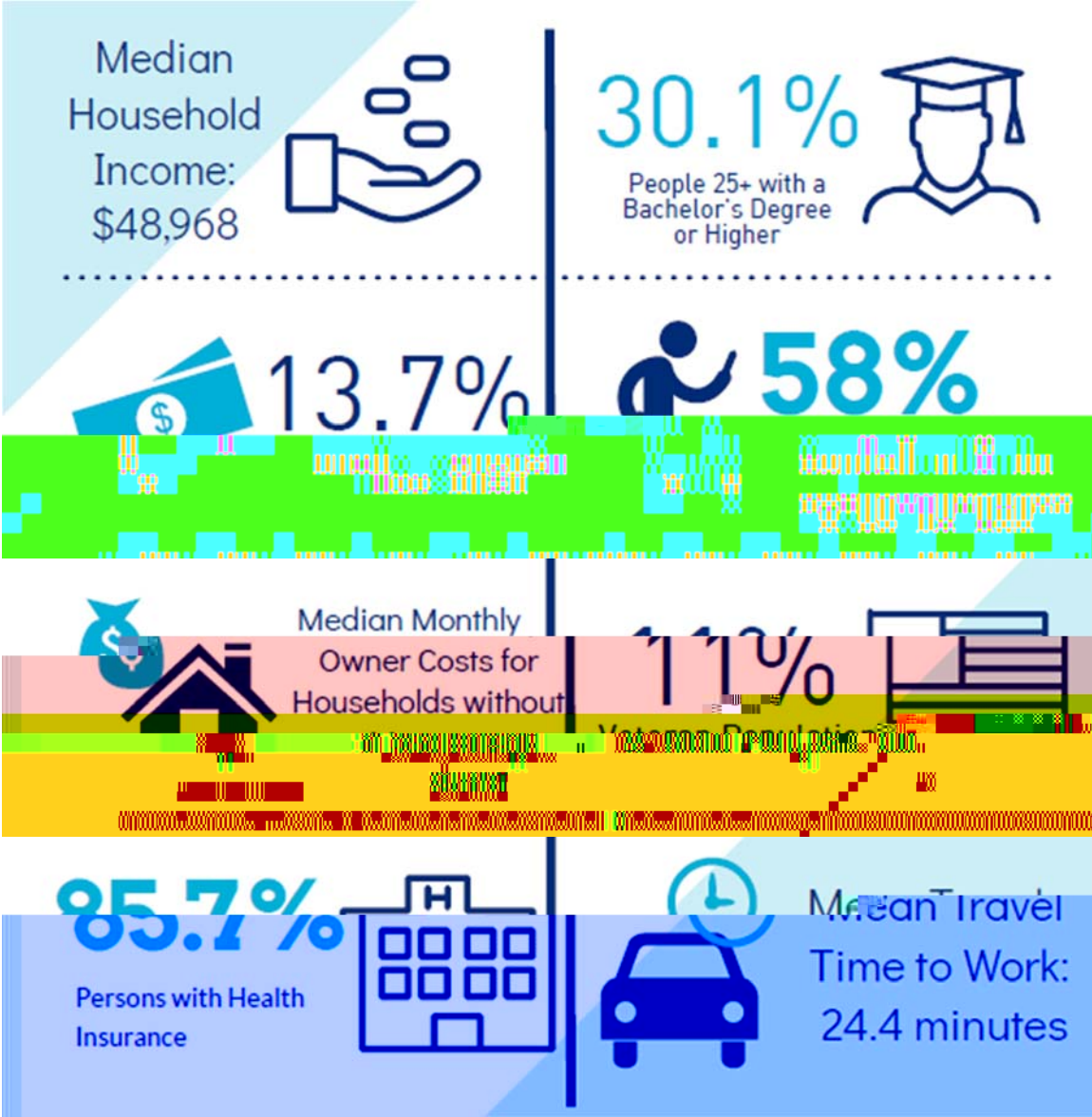
Introduction

e

Kim Christine

Community Served by the Hospital

About our Community...



Process and Methods to Conduct the Community Health Needs Assessment

-

- -
 -
 -
 -

-

Organization Providing Input

**Populations Represented by
Organization**


“Many people are employed, yes, but they still can’t afford their portion of the health insurance copay.” – Key Informant


“Some of the factors that are contributing to obesity are poor diet quality, easily accessible high fat and high sugar convenience foods, less accessible fresh fruits and vegetables, cost of produce vs. convenience foods, and time.” – Key Informant


-


Health Topic	Indicators	Score
Mental Health & Mental Disorders	4	1.95
Environmental & Occupational Health	4	1.92
Immunizations & Infectious Diseases	10	1.71
Respiratory Diseases	11	1.68
Cancer	16	1.55
Diabetes	3	1.54
Heart Disease & Stroke	10	1.54
Substance Abuse	15	1.51
Social and Environmental Determinants of Health	Indicators	Score
Transportation	5	1.76
Sub Population Health	Indicators	Score
Older Adults & Aging	20	1.91
Women’s Health	6	1.58
Teen & Adolescent Health	13	1.53


Summary of Significant Health Needs


	Access to Health Services
Community Feedback	<ul style="list-style-type: none"> • • • •
Indicators	<ul style="list-style-type: none"> • •


	Cancer
Community Feedback	<ul style="list-style-type: none"> • •
Indicators	<ul style="list-style-type: none"> • •


	Immunization and Infectious Disease
Community Feedback	<ul style="list-style-type: none"> • •
Indicators	<ul style="list-style-type: none"> • •

	Maternal, Infant and Fetal Health
Community Feedback	<ul style="list-style-type: none"> • • •
Indicators	<ul style="list-style-type: none"> • •

	Mental Health and Mental Disorders
Community Feedback	<ul style="list-style-type: none"> • • • •
Indicators	<ul style="list-style-type: none"> • •

	Oral Health
Community Feedback	<ul style="list-style-type: none"> • •
Indicators	<ul style="list-style-type: none"> •

	Respiratory Disease
Community Feedback	<ul style="list-style-type: none"> • •
Indicators	<ul style="list-style-type: none"> • •

	Substance Abuse
Community Feedback	<ul style="list-style-type: none"> • • • •
Indicators	<ul style="list-style-type: none"> • • •

Prioritization of Health Needs

•
•

Resources Available to Meet Identified Needs

Behavioral Health

Tools to Quit and Quit Smoking Now (Smoking Cessation)

- Tools to Quit
- Quit Smoking Now

Mental Health First Aid

ACTS Pilot Program

Peer Specialist in Emergency Department

West Central Florida Mental Health Wellness Coalition

Access to Services

TGMG Primary Care Clinics _____

TGH Specialty Center at Healthpark _____

TGH Fast Track Urgent Care

Market Place Open Enrollment Insurance Exchange

Virtual Care - <https://www.tgh.org/services/virtual-care>

TeleHealth Kiosks
<https://www.tgh.org/news/media-resources/tgh-and-american-well-set-deliver-online-health-care>

Exercise, Nutrition & Weight

Eat Healthy, Be Active

Active Living Every Day

Healthy Eating Every Day

TGH Bariatric Program _____

- YMCA Veggie Van at HealthPark _____
- Where Love Grows _____
- Kids in the Kitchen _____
- University Area Community Development Community Garden _____

Diabetes

Nation Diabetes Prevention Program & Prevent T2 -

Diabetes Self-Management Program

Diabetes Self-Management Education

Fetal and Maternal Health

TGH Breastfeeding Education _____

March of Dimes Supportive Pregnancy Care Program at HealthPark -

<https://www.marchofdimes.org/supportive-pregnancy-care/about-march-of-dimes-supportive-pregnancy-care.aspx>

Progress on Health Priorities Identified in the 2016 Health Needs Assessment

Obesity:

-
-

□

Appendices

Data Scoring Detailed Methodology and Tables:
{<https://www.tgh.org/community-health-needs-assessment>}

Community Survey Tool: {<https://www.tgh.org/community-health-needs-assessment>}

Key Informant Questionnaire: {<https://www.tgh.org/community-health-needs-assessment>}
