

2009 FOUNDATION ANNUAL REPORT



Dear Friends,

On behalf of the Tampa General Hospital Foundation, I am pleased to report that 2009 was a successful year. In these hard economic times, we raised over \$3.2 million for the Foundation and provided almost \$1.2 million in support to the hospital. Money raised as part of our campaign for the Jennifer Leigh Muma Neonatal Intensive Care Unit will be paid to the hospital in early 2010. Our achievements would not have been possible without the generosity of the many individuals, corporations, and foundations that support us throughout the year. We are especially grateful for the support we receive from the TGH Medical Staff; the care that they provide is our best advertisement.

I would especially like to thank those organizations that held fundraisers during the year to benefit TGH: Tampa Bay Lightning Foundation, Glitz & Sticks, benefiting the Pediatric Intensive Care Unit; Skanska USA, fishing tournament benefiting the Neonatal Intensive Care Unit; and IBEW No. 108, golf tournament benefiting the Burn Family Fund.

The hospital's annual report highlights some of the cutting-edge care provided every day at Tampa General, while the Foundation's annual report highlights its work in providing care and support to our patients and their families. These two organizations work hand in hand to make Tampa General such an extraordinary hospital.

During the past year, the Foundation funded a myriad of projects and programs. We provided: infant car seats for all of our new babies, specialized equipment for the benefit of the hospital and its staff, the Teasley – Tampa General Hospital Professorship in Gynecologic Oncology at USF, scholarships for nursing students, and much more. We are particularly proud of the funding of over \$75,000 in project requests that are the result of funds raised through the Women's Leadership Council. This was the inaugural year for the council, and we appreciate the involvement of its 74 founding members.

People are motivated to support Tampa General for many reasons. Some give in gratitude for the care they or a loved one received at the hospital or because they have been personally affected by some specific disease. Others simply want to support TGH in recognition of the fantastic care provided to all patients. When you make a commitment to support the TGH Foundation, your gifts

2009-2010 Executive Committee

J. T. T. C. J.

R. C. L. K. C.

M. C. S. B.

C. B. M. C. E.

A. R. S. A. A.

S. G. B. A. T. MD. L.

C. A. A. M. C. L.

P. A. S. M. A. L.

H. T. L.

Staff

R. b. D. LaV. E. D.
Ma. C. D. D.
L. F. a. t. E. M.
Na. c. R. D. D. M.
G. a. E. a. D. C.
Ka. a. W. b. E. A.

2009-2010 Board of Trustees

R. K. Ba.
Ma. Ja. Ca. b.

B. a. J. Ca.
D. a. J. D. c.

P. S. D.
R. c. a. D. b.

C. Sa. E.
A. t. M. E. tt.

H. G. a. , III.
A. a. G. a.

T. A. H.
R. a. A. H. t.

J. L. , MD.
J. B. McK. bb.

E. H. McN. c.
M. c. a. S. M. a.

Ma. A. N. , E.
C. a. N. Pa. a. , MD.

St. L. S. t.
J. T. S. tt, MD.

Pa. Sta.
Cat. L. St. a.

Pat. c. a. C. S. a.
J. E. c. Ta.

R. b. t. A. Wa. t.
J. C. W.

S t Ta a G a H ta
H U P V G Ca

T Ta a G a H ta F at c at t a t
tt ac, cat a c Ta a G a H ta. Eac a, a,
c at a at tt F at t a a t a
t, a a c at c t b t a a t. T a t t at t at
t c a a t ta, a c a ,t t, t ca a t.
Eac t, a a , a a c t t at t, a , ca a ta
Ta a G a H ta. T a ta a t t at t at at
t t Ta a G a.

The Golden Tree of Life

I L M Ma J A

By Family and Friends

50t G A a A a Ba ba a B

7-19-58

By The Bonfe and The Matthews Families

I M Ma a Cab a

By TGH Senior Management Team

I L M J S C t

From her Friends and Co-Workers

I M J A. Ma t a , DDS

By Tampa General Hospital Medical Staff

I M A a M a

By Dr. Dana L. Shires

I M A a M a

By TGH Senior Management Team

I M Ha M. A. Ra a , MD

By Tampa General Hospital Medical Staff

J a R b , CRN, BSN

Dec. 15, 1957– Nov. 1, 2008

'Til we meet again in heaven

In loving memory, forever my dearest friend

I M J T

From his Family at GTE Federal Credit Union

I L M E Wa

By Tampa General Hospital Medical Staff,

Family and Friends

Camp is paid for by the Tampa Firefighters and Paramedics, IAFF 754, and generous donors to the Tampa General Hospital Foundation. The camp's counselors are TGH nurses, therapists, firefighters and paramedics who volunteer to provide a safe and supportive environment for these young survivors.

T a a C t Fa F

Like many of the programs at TGH, our Level I trauma center treats patients from distant counties, presenting their families not only grief and worry about their conditions but also the financial burden of being here with them.

That's where the Trauma Center Family Fund can help. Sometimes, when trauma patients are flown to Tampa General and stay here for a long time, it means their families have to drive long distances to come see them. Through the fund, we can help with parking passes, meal vouchers to the cafeteria, and a hotel room to get them settled.

The fund also helps the trauma department add to its clothing supply for homeless patients who have had their clothes cut off so they could receive treatment. Without this help, they might not have anything to wear when they are discharged from the hospital.

B C t Fa F

Burn Center patients and their families can face numerous hardships during and after their stays at Tampa General. They may have lost their belongings in house fires, and their often-lengthy hospitalizations can mean time lost from work. Many patients come from distant counties, adding the cost of food and lodging to their families' financial burden.



Representatives from Tampa Electric Company and IBEW Local 108 present checks totaling \$35,000 to burn survivor Matt Dolson and Joe Versaggi (2nd and 3rd from left), physicians and staff from the TGH Burn Center.

The Burn Center Family Fund has been established to help these patients and their families. When patients are flown here, their families may have no place to stay. The Foundation can provide a couple of days in a hotel, meal vouchers to the food court and parking passes for the garage. The fund has also provided medical and dressing supplies.

The Burn Center Family Fund began nine years ago with a donation from The International Brotherhood of Electrical Workers, Local 108, in memory of Tampa Electric employees who

were lost or injured during an industrial accident in 1999. Since then, the fund has received generous contributions every year from IBEW, Tampa Electric, TECO Energy and other caring donors.

T Bab . B P t . F

Some of Tampa General Hospital's patients are tiny newborns in need of extra medical care to ensure the best possible start in life. This extra care is provided in Tampa General Hospital's Neonatal Intensive Care Unit (NICU), where critically ill babies or premature newborns and infants requiring close observation receive the most advanced medical care available. The TGH Neonatal Intensive Care Unit is designated by the state as a Level III nursery, the highest rating, and offers life-saving treatments and technologies to provide the full range of services that these newborns require.



Construction of the Jennifer Leigh Muma Neonatal Intensive Care Unit includes building out over an existing roof at the hospital.

More than 5,500 babies are born at Tampa General Hospital each year and approximately 15% of them require the specialized care of the NICU. In addition, TGH also receives seriously ill babies transferred from other facilities so that they too may benefit from our care and services.

The original Neonatal Intensive Care Unit at Tampa General Hospital was built in the 1970's and moved to a new location within the hospital in 1986. Many things have changed since then. Not only have the number of total deliveries, including high-risk deliveries, increased, but also what is considered state-of-the-art in facility design has changed. These are just two of the factors that led to TGH's decision to completely redesign and expand our NICU.

From its design and layout to its lighting, equipment, and amenities, the new \$35 million Jennifer Leigh Muma Neonatal Intensive Care Unit will combine the highest technical capabilities with an atmosphere of healing for infants and their families. Tampa General's expansion of the current NICU into the old Labor and Delivery area and onto the roof above the third floor will increase capacity from the current 42-bed, 19,000-square-foot unit to an 82-bed, 52,000-square-foot unit.

Providing Very Good Care

W c a S t F

In 1989, the Tampa Generals Quad Rugby team was established as a program of Tampa General's Wheelchair Sports Program. Since its inception, the Generals have won multiple national championships and have remained one of the top ten teams in the United States. The Generals are currently ranked 7th in the country out of 40 teams. Aside from the success as a team, individual team members have also made great accomplishments. Over the team's 21-year existence, four members have won gold medals for rugby at the Paralympics and many other team members have been active in the international rugby community.

Every January, the Generals host a three-day international rugby tournament where teams come from around the world to compete. The tournament is made possible because of the support from the Tampa General Hospital Foundation. The Tampa General Rehabilitation Center provides wheelchair accessible vans and recreational therapy staff to transport visiting teams during the event. Nurses and therapists use the tournament to reinforce to patients that a disability does not have to be limiting and that there are activities available for the spinal cord injury community. Patients not only need to hear about activities available to



Members of the Tampa Generals Quad Rugby team gather prior to the start of tournament play.

them, but actually be able to see and participate in them. This collaboration between the Tampa Generals and TGH perpetuates the message that life does go on after a disability.

The Foundation's Wheelchair Sports Fund provides funding for the tournament as well as support of the team members as they participate in other tournaments around the country.

N S c a F

The fact that the United States is experiencing a nursing shortage is well documented. With Baby Boomers aging, the need for health care growing, and nursing colleges and universities trying to expand enrollment levels, many organizations are seeking solutions to this growing problem. Tampa General Hospital is no exception.

In determining the best way to address the nursing shortage at TGH, internal research revealed that TGH staff members who wanted to become nurses had difficulty balancing work, school, study time and family. Cutting back on work hours to allow time for school and study meant losing health and other employee benefits, which most staff members could not afford. Their desire to become an RN was apparent, but the practical feasibility of attending and completing nursing school was extremely low.

Our highly successful and innovative Nursing Scholarship Program is designed to give TGH employees the opportunity to attend nursing school full-time while working part-time and continuing to receive the equivalent of a full-time salary and their full employee benefits. Mentors at the hospital and universities advise the students throughout the program.

Upon completion of their degrees, the scholarship recipients must agree to work full-time at TGH as RNs for the same length of time they were in the scholarship program after passing the Florida Board of Nursing exam. Every day, one of these new nurses is taking care of patients at Tampa General Hospital thanks to this special Foundation program.

Donor Opportunities

T a a G a H t a F at F c C b

The TGH Foundation Focus Club was created to recognize the community leaders, friends, corporations and foundations that annually support us. This support makes a difference in the lives of the patients and the communities that Tampa General Hospital serves.

Although we can never say "thank you" enough for the donations that help to make it all happen at Tampa General Hospital, membership in the Foundation Focus Club is an expression of how much we appreciate these generous gifts.

As a member, you will have special opportunities to connect with the Tampa General Hospital community and learn how your contributions make a difference. These opportunities can range from recognition at our annual dinner, to a sneak peek at the cutting-edge facilities and *very good care* we offer patients, to an exclusive opportunity to dine with the leadership of Tampa General Hospital and learn how we are touching the lives of our patients and addressing community needs.

G L

The Foundation Focus Club recognizes donors who have given \$1,000 to \$9,999 to the Tampa General Hospital Foundation during a calendar year.

There are three recognition levels within the club based on total annual gifts and commitments to the TGH Foundation. In addition, lifetime giving is also recognized beginning at \$10,000.

S C b:	\$1,000 - \$2,499
G C b:	\$2,500 - \$4,999
P at C b:	\$5,000 - \$9,999

B t

All TGH Foundation Focus Club members receive the following benefits:

- Invitations to TGH special events and activities including the TGH Foundation Annual Dinner
- Subscription to quarterly TGH Foundation Focus newsletter and the annual report
- Recognition in the TGH Foundation Annual Report

As you move to other levels within the club, additional benefits are available:

G C b: \$2,500 - \$4,999

All the benefits at the Silver level, plus:

- Program recognition at the TGH Foundation Annual Dinner

P at C b: \$5,000 - \$9,999

All the benefits at the Gold level, plus:

- Invitation to TGH Lunch and Learn

W ' L a C c

The TGH Foundation's Women's Leadership Council (WLC) was established in 2008 to inspire women to use their power as philanthropists to improve and advance the health care provided to our patients at Tampa General Hospital. The WLC provides a unique opportunity for women to become involved and learn more about TGH and network with each other. Members contribute \$1,000 annually and the collective funds are allocated to programs or projects selected by the membership. By pooling their funds together, the women, as a group, can create a greater impact with their contribution than each would make individually.



Lucy Weaver (left) representing WLC corporate sponsor Bank of Florida, with founding members (left to right) Eleanor McInnis, June Annis, Rosemary Henderson, Margo Harrod and Natalie Goodwin at the inaugural program held at the Tampa Bay History Center.

The council meets three times a year. The first two meetings include programs based on the results of a membership interest survey and the third meeting is for presentation and selection of funding requests. A list of requests with a brief description and a ballot is mailed to all members unable to attend the presentation so that they also have a voice in the allocation of the funds.

The **Ba F a** was the corporate sponsor for the 2009 Women's Leadership Council. The bank's generous contribution covered all of the expenses of the program, ensuring that all contributions by council members would go towards funding projects at the hospital.

The March 2009 program, "What to Do in an Emergency," was presented by Dr. Tracy Sanson. Dr. Sanson, an emergency room physician at TGH, is the Director of the USF Division of Global Emergency Medical Sciences, Team Health's Medical Leadership Education and Professional Liaison Division Director, USF's Emergency Medicine Clerkship Director and Residency Education Director.

The May 2009 program, "Is It Me or My Memory?" was presented by Seema Eichler, PhD. Dr. Eichler, a clinical neuropsychologist, is the coordinator for neurotraining therapists at TGH. While providing oversight of the psychology student training program, Dr. Eichler provides a full range of psychological services with an emphasis on neuropsychological assessment and adaption to disability counseling.

In October 2009, there were 11 funding requests presented to the membership. With 78 members the inaugural year, \$78,000 was available for projects, enabling six requests to be funded for a total of \$74,766.

Those requests selected for funding include:

- Infant hearing screening machine
- Bladder scanner for pediatrics
- Blanket warmer for nuclear medicine, CT scan and ultrasound patient areas
- Sleeper sofa for palliative care suite
- Blood pressure monitors for community health screenings
- CD burner for radiology images



T G T L F

Tampa General Hospital Foundation's popular commemorative giving program, The Golden Tree of Life, gives you a wonderful way to celebrate the birth of a child, graduation, wedding, anniversary, retirement or to remember the life of a loved one.



Jennifer Crothers' mother, Marilyn Sellers (center), receives a memorial plaque from the many friends and family who attended Jennifer's memorial service.

Gracefully adorning the main lobby of the hospital, The Golden Tree of Life tangibly recognizes your commitment to caring. By purchasing a leaf or a stone, you provide a lasting vision of hope and encouragement for the thousands who visit Tampa General Hospital each year. Additionally, your support ensures the growth and development of educational opportunities, medical services and research initiatives that are important to the comprehensive care provided at Tampa General Hospital.

If Tampa General Hospital has played an important role in the life of someone special to you, recognizing that person on The Golden Tree of Life would be an especially meaningful way to demonstrate support for TGH.

W t C at M -I t P a

TGH's White Coat Mini-Internship Program is an opportunity to show our major donors the cutting-edge technology and expertise of our physicians and staff in a way that won't be forgotten. It is a once-in-a-lifetime opportunity to experience the world of health care. Over the past eight years, close to 400 community leaders from a variety of professions have joined TGH physicians in operating suites, at patients' bedsides, and in other hospital locations rarely seen by people outside the medical profession. They have witnessed routine procedures and complicated surgeries; they've watched physicians hold life-changing discussions with patients and families and confer with colleagues on vital issues. For this year's interns, including the October 2009 class (the largest class ever), it was no different – a chance to go behind the scenes and see the hospital from an insider's point of view.



Richard Gonzmart (right) and Dr. Bruce Zweibel in one of the new Interventional Radiology suites in the Bayshore Pavilion.



Thayer Smith (left) split his White Coat experience between Dr. Tom Bernasek (center) and Dr. David Smith.

S c a M a a O at Sa ta

Are you a fan of the TGH Foundation on Facebook? We provide frequent updates to our fans including news stories, events and great opportunities to get more involved with TGH and the Foundation.

This fall the Foundation kicked off our social media efforts with the White Coat Intern Experience on Facebook and an interview with Richard Gonzmart, owner with The Columbia Restaurant. Richard and his wife Melanie participated as White Coat Interns in June, and Richard used Facebook during the program to share his experience with his entire network online. The October class of White Coat Interns were able to follow their fellow interns on a daily basis with updates, video interviews, an online discussion forum and more.

During December, Operation Santa, an online fundraising campaign, was launched to ensure that Santa made it to the TGH Children's Medical Center by Christmas. This year more than 20 children were still too ill to make it home for the holidays. Each year we do our best to provide a holiday party and gifts for the sickest of our little patients. With the added threat of the swine flu, visitation was restricted in the hospital, and we were worried that many of the Christmas gifts that normally find their way through Santa's helpers to the TGH CMC would not be able to make it.

The response to the Operation Santa campaign was tremendous! In just 17 days online, we raised more than \$5,000 in cash donations including more than \$800 given through Facebook. In addition, many of Santa's elves came through with donations of items from the Children's Wish List including a new Wii for the Child Life Room, DVDs, games, and a very special delivery from Florida Orthopaedic Institute and Florida Gulf-to-Bay Anesthesiology. Operation Santa's total contributions, including in-kind donations, totaled more than \$7,500!



Child Life Room volunteer Mary Frankle (2nd from left) helped deliver toys and games collected by employees and physicians with Florida Orthopaedic Institute and Florida Gulf-to-Bay Anesthesiology as part of Operation Santa.

Signature Events

N t a t t C c

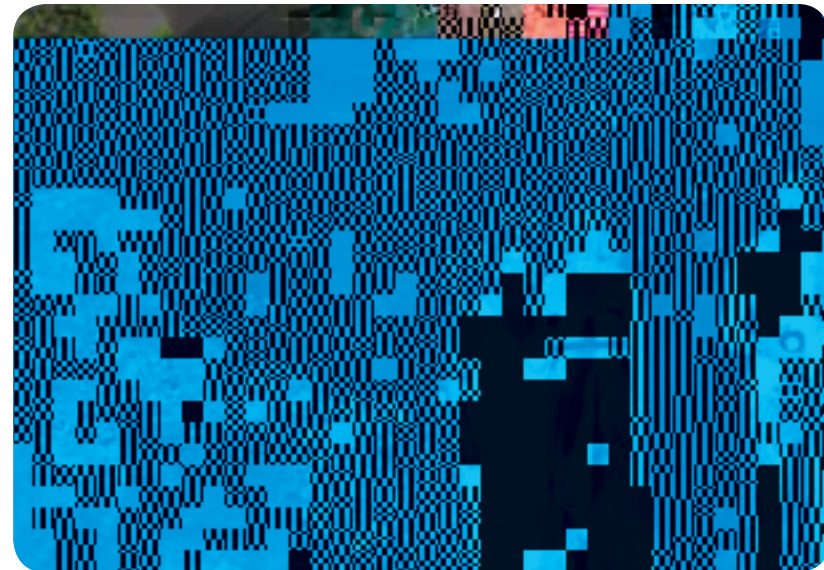
Held on January 8, 2009 at the St. Pete Times Forum, the 18th Annual Night at the Circus, chaired by Andrea Gramling, was a special evening for kids of all ages. Donors experienced the thrills of the Ringling Bros. and Barnum & Bailey Circus® with over \$170,000 net proceeds benefiting Tampa General's new Neonatal Intensive Care Unit. The TGH Foundation also donated over 1,150 tickets to local charities so children normally unable to attend would have a chance to experience the thrills of The Greatest Show on Earth®. We extend special thanks to the Don and Erika Wallace Family Foundation – our Big Top Sponsor, SunTrust – our Three Ring Sponsor and the Tampa Bay Lightning and Lightning Foundation – our Patrons' Party Sponsor. Other major sponsors included: The Bailey Family Foundation, Buchanan Ingersoll & Rooney PC, David A. Straz, Jr. Foundation, McNichols Co. & Family and Radiology Associates of Tampa/Tower Imaging.



The 2009 Circus Committee, chaired by Andrea Gramling (center front) posing in costumes from past Ringling Brothers circuses.

M t T Ga a

The 12th Annual *Moments in Time* Gala, "The Garden of Eden...An Evening of Temptation," held on Saturday, May 9, 2009 at the Grand Hyatt Tampa Bay, was a huge success! Guests were captivated by the lush gardens, lured into eating some of the finest food available and were tempted to dance the night away. Guests enjoyed fabulous food and beverages, a live dance band and tempting activities including poker, roulette, a putting contest and even a game of pool. Chance Drawing tickets were sold for \$100 each with a chance to win ten great prizes. The \$10,000 Grand Prize was won this year by three TGH employees. Major sponsors included the Don and Erika Wallace Family Foundation, Radiology Associates of Tampa/Tower Imaging and Moffitt Cancer Center. The year's gala, under the guidance of Chairwomen Mary Jane Campbell and Barbara Hurst, made a net profit of over \$165,000 for Tampa General Hospital's Fund for the Future.



Mary Jane Campbell and Barbara Hurst chaired the Garden of Eden ... An Evening of Temptation.

A a G T a t

On October 26, 2009, golfers enjoyed a quick getaway from their hectic schedules and tackled the intimidating bunkers of Old Memorial Golf Club at the TGH Foundation's 11th Annual Golf Tournament. This year's event was again sponsored by the Baldwin Connelly Group and The Yerrid Foundation and was chaired by Foundation Trustee, Mark Nouss. Other major sponsors included Buchanan Ingersoll & Rooney PC, Caspers Company, Harrod Properties, KPMG, Morrison Healthcare Food Services, Pamela and Leslie Muma Family Foundation, Inc., and Skanska USA Building, Inc. Followed by dinner and a live auction, this successful event raised over \$170,000 in net proceeds for the TGH Foundation's Fund for the Future and Tampa General's MORE HEALTH, Inc., a health education program.



Mike Azzarelli, Jim Kennedy and TGH President and CEO Ron Hytoff (left to right) congratulate tournament chairman Mark Nouss on a successful event.

A a D

Guests celebrated Tampa General Hospital's many accomplishments at the TGH Foundation's Annual Dinner on October 28, 2009. The 35th Annual Dinner was once again sponsored by The Bank of Tampa and Florida Investment Advisers. Guests enjoyed hearing guest speaker Brad Kendell tell his story about his remarkable recovery following a plane crash in 2003. Outgoing Chair Phil Dingle highlighted the accomplishments of the past year before turning the gavel over to incoming Chair John Touchton. Cathy Phillips was presented the Madeline P. Gibbons Humanitarian



James M. "Red" McEwen Award recipient Dottie Berger MacKinnon with Foundation Chair John Touchton.

Award in recognition for her enthusiasm, dedication and selfless volunteerism. For the many years of hard work and effort contributed to the betterment of Tampa General and her "Spirit of Philanthropy," the 2009 James M. "Red" McEwen Award was presented to Dottie Berger MacKinnon.

A a F T a t

Skanska USA sponsored the 4th Annual TGH Foundation Fishing Tournament. This year's tournament raised over \$25,000 for construction of the Jennifer Leigh Muma Neonatal Intensive Care Unit. The Captain's Party, shotgun start and awards program were held at Hula Bay. Anglers had one goal in mind – catch the biggest Spanish mackerel that they could. There were cash prizes awarded and some of the lucky anglers generously donated their winnings back to the hospital.



Foundation Chair John Touchton (left) and Trustee Pam Muma (2nd from right) receive the proceeds from the Skanska Fishing Tournament from Brian Yarborough, Roger Stephan and Amina El-Yousef for the Jennifer Leigh Muma Neonatal Intensive Care Unit.

Honorarium and Memorial Gifts 2009

In Recognition of the Anniversary of Rick and Doris Wilds

Ronnie Wicek

In Recognition of the Graduation of Chase and Jacqueline Barli with Appreciation for their Loving Supporters

Peter R. and Christina Barli

In Recognition of the Retirement of Len Meltzner

Lee and Ed Fain

In Honor of Michael Albrink, MD

Terrell Clark

In Honor of Reverend Celillon Alteme

Lisa and William Richardson

In Honor of June and Mike Annis

Julianne McKeel

In Honor of the Barrett Bunch – Tierney, Brendan and Colton

Wanda Easton

In Honor of Martha Boonyapricha, Jackie Gay, Nancy Hawes, Linda Lawson and Sarah Millan

Glenda Evans

In Honor of Alvina Boyd

William H. Boyd

In Honor of Sadie Burt

Julianne McKeel

In Honor of Margarita R. Cancio, MD

Arnold Ison

In Honor of Mike and Elizabeth Carrere

Julianne McKeel

In Honor of Frank and Carolyn Chunn

Julianne McKeel
Gary and Margo Harrod

In Honor of Mandelyn Cloninger

Wanda Easton

In Honor of Anne Curtis, MD and USF Heart Health

The Walter Foundation

In Honor of Robin DeLaVergne

Edward and Becky Savitz

In Honor of Mr. and Mrs. Ted DeLaVergne

Gary and Margo Harrod

In Honor of Mr. and Mrs. Charles Greacen

Gary and Margo Harrod

In Honor of Mr. and Mrs. Bob Greene

Gary and Margo Harrod

In Honor of Reba Godby

Barbara and Craig Duncan
Vicki and Norman Moon

In Honor of Kenneth A. Gustke, MD and the Staff of 7A Joint Replacement

Jeffrey Bowen

In Honor of Gary and Margo Harrod

Julianne McKeel

In Honor of Rosemary Henderson

Gary and Margo Harrod

In Honor of Mr. and Mrs. Tom Henderson

Gary and Margo Harrod

In Honor of Mr. and Mrs. William Hobson

Gary and Margo Harrod

In Honor of Mr. and Mrs. Charles Ketchey

Gary and Margo Harrod

In Honor of Blossom Leibowitz

Kay Jacobs

In Honor of Mr. and Mrs. Chip Lomel

Gary and Margo Harrod

In Honor of Mr. Tom Lynch

Gary and Margo Harrod

In Honor of Mr. and Mrs. Roy McCraw

Gary and Margo Harrod

In Honor of Mrs. F. Graham McKeel

Gary and Margo Harrod

In Honor of John Nickerson – with thanks for giving a glimmer of hope in his fight against IPF

Anonymous

In Honor of James Norman, MD and Douglas Politz, MD and Staff

Mr. and Mrs. Robert A. Harris

In Honor of Norman Parathyroid Team

Richard and Susan Tilley

In Honor of Cecille and Harvey Parrido

Stephen Meyers

In Honor of Mr. and Mrs. Mike Preston

Gary and Margo Harrod

In Honor of Dr. and Mrs. Mike Ramsey

Gary and Margo Harrod

In Honor of Alexander Rosemurgy, MD

Edward and Becky Savitz

In Honor of Tammy Stepp

Judith Stepp and Stepp's Towing Service Tampa, Inc.

In Honor of TGH Children's Medical Center, Emergency Room Doctors and 5th Floor Nurses

Dr. and Mrs. David Leibowitz

In Honor of TGH Emergency Room Staff

James and Elizabeth Bryan

In Honor of Stella Thayer, Esquire

Janet Goldberg McEnery

In Honor of Holly Tomlin

Merchants Association of Florida, Inc.

In Honor of Joseph Anthony Versaggi, Jr.

Diane and Davis Schuster and their wedding guests

Honorarium and Memorial Gifts 2009

In Honor of Mr. and Mrs. David Ward

Gary and Margo Harrod

In Honor of Mr. and Mrs. George Watkins

Gary and Margo Harrod

In Honor of Carter Wright

Julianne McKeel

In Honor of Wilma Wyatt

Chad Elledge
Employees Benefit Trust Fund
Robert J. Percey
Marie and David Ward

In Honor of Dr. and Mrs. Bob Yelverton

Gary and Margo Harrod

In Honor of Charles Yukon, MD

Catherine Chidester

In Memory of Gary Anderson

Louise and Dave McClelland

In Memory of Mary "Jo" Andrews

Catherine and Dale Andrews
Jon, Kerstin, and Chris Andrews

In Memory of Alex Azoy

Helen Beckett
Maretta and Wayne Perez

In Memory of Norma Darlin Barrett

Sabra A. Carl

In Memory of Norma Gavilan Barli

Robin and Ted DeLaVergne

In Memory of Audrey Baumann

Radiology Associates of Tampa

In Memory of Marjorie Benati

John and Maureen Ogden

In Memory of Bob Bishop

The James W. Warren III Family

In Memory of Ronald Biedenkapp

S. M. Colvin
Oak Hills Golf Club and Staff
Anton and Jane Szeltner

In Memory of Barbara Bonfe

Albert L. Bonfe
The Bonfe and The Matthews Families
Mr. and Mrs. Barry Bonfe Darling
Patti, Barry and Lilyth Bonfe Darling

In Memory of Maria Cabrera

Deborah Brown
Lindell A. Busciglio
Roberto and Rosa Cabrera
Beata C. Casanas, MD and Robert J. Casanas, MD
Robin and Ted DeLaVergne
Dr. and Mrs. John N. Greene
Norma and Lazaro Hernandez, MD
Hill Ward Henderson, Attorneys at Law
Ron Hytoff and Senior Management of Tampa General Hospital
Vicki Kenyon
Kindred Hospital – St. Petersburg
Deana L. Nelson
John and Maureen Ogden
Donna Peck
Dr. John T. and Mrs. Barbara Sinnott
The Honorable and Mrs. David A. Straz, Jr.
Sherrill and Paul Tomasino
USF Physicians Group
Raghavendra Vijayanagar, MD and Family
The James W. Warren III Family

In Memory of Alan Carter

Mr. Frank Schmeer

In Memory of Paul Joseph Conroy

Calvin and Donna Pletcher

In Memory of Robert H. Cooley

Edna Broyles

In Memory of Richard Conover

Sadie Burt

In Memory of Andre de Corla-Souza, MD

Gregory G. Gaar, MD

In Memory of John Costello

Evely Harvey

In Memory of Jennifer Crothers

Lindsay N. Cashion, III
Lynn Engerski
Maria Fenanda Fernandes
Oslec and Gisele Fernandez
Hoar Construction LLC
Robert M. McCoy
Alfonso and Elisa Nixon
Mark and Elizabeth Shumate
Skanska USA Building Inc.
Ramon A. Wong and Lana J. Nestor

In Memory of Elizabeth Curry

Dr. and Mrs. Timothy J. Curry
Steve and Hazel Gerencer

In Memory of Salvatore DeAngelis

Giuseppa DeAngelis
John and Ella Wheeler

In Memory of Jennifer M. DeFrancisco

Dianne Barrowman
Mrs. Maxine M. Hantak

In Memory of Daniel Wright DeLaVergne

Peter and Christi Barli
Mina DeLaVergne
Robin and Ted DeLaVergne
Gary and Margo Harrod
Julianne McKeel
Stephen Meyers
Mr. and Mrs. W. Tommy Morgan, III
Judith M. Ploszek

Honorarium and Memorial Gifts 2009

The New York Yankees Tampa Foundation, Inc.
Mr. and Mrs. I. Clay Thompson, Jr.
The James W. Warren III Family
Mr. and Mrs. Edward H. West

In Memory of Daniel DeLaVergne and Graham McKeel – with love and a smile

Julianne McKeel

In Memory of Langston Duncan

Anonymous

In Memory of Sonny Everett

Robin and Ted DeLaVergne

In Memory of John J. Faircloth

The James W. Warren III Family

In Memory of Jack Gaar

Cheryl and Mark Dillon

In Memory of Mary Ellen Germany

Robin and Ted DeLaVergne

In Memory of Mary Catherine Gibbs

Richard and Beverly Gibbs

In Memory of G. William "Bill" Gray

Julianne McKeel

In Memory of Joseph Granda

Edna Broyles

In Memory of David Hanlon

Robin and Ted DeLaVergne
The James W. Warren III Family

In Memory of Jay W. Hatton

Mina DeLaVergne

In Memory of Kelly Sue Hays

Mr. and Mrs. Terry Tupy

In Memory of Michael C. Heath

Mary Chastain
Stephanie Comer

John and Audrey Custer
Robin and Ted DeLaVergne
Mike and Bernadette Diamond
The Frankle Family
David and Denise Nichols
Randy Ockman
Ginger and Ronald Oliver
Lucy and John O'Rourke
AVM Graham Stacey, MBE
Taylor and Marty Thorington

In Memory of A. Clewis Howell

Robin and Ted DeLaVergne
The James W. Warren III Family

In Memory of Martha Russ Hudson

Robert C. and Ruth L. Hudson

In Memory of Mary Sue Jeter

Betty J. Parsons

In Memory of William H. King, III

Gail Deliso
Todd Doyle
Theodore and Dolores Fedus
Madelyn and Robert Frink
Gayl and James Hackett
Tom and Rita Head
Mary Ellen Keating
Mr. Richard Keating
Timothy J. and Ann M. Keating
Lennon Family – Aunt Carol and Cousins Donald,
Charles, Lissa and Richard
Richard and Kinter Lennon
Carol and Dick Lynch
Janice and Gary Martin
Kathleen and John McGee
D. Eric McKechnie
Alice B. Means
Kenneth Robertson

In Memory of Edna Lessard

Radiology Associates of Tampa

In Memory of Carl Daniel Long

Gregory G. Gaar, MD

In Memory of Raquel S. Lorenzo

Robin and Ted DeLaVergne
Sally Houston, MD
Deana Nelson
Ronald Peterson
Ron Peterson, Barbara Tewksbury, Peggy Absher
and Larry Tillman

In Memory of Bill Macrae

Kenneth L. MacRae

In Memory of Joseph A. Martineau, DDS

Medical Staff of Tampa General Hospital

In Memory of Angela Mendoza

Ron Hytoff and Senior Management of
Tampa General Hospital
Dana L. Shires, MD

In Memory of Anne McGinnis Mills

Suzanne Lowry Botts
Mary Branch
Don and Campbell Burton
Karen Carmody
Jane and Haynes Carswell
Judy and Flake Chambliss
Adele and Richard Clarke
Robin and Ted DeLaVergne
Founders Garden Circle
Dada Pittman Glaser
Anne and Tom Henderson
Rosemary Henderson
Anne Lester Hunt
Rosemary and Derrill McAteer
Julianne McKeel
Berdina and Tommy Morgan

Honorarium and Memorial Gifts 2009

Anne and Hal Mullis
Caroline L. Pate
Tony Ragano
Judith O. Rosenkranz
Bruce and Adajean Samson
Mr. and Mrs. Andrew Shackelford
Dr. and Mrs. John Toole
Lee and Tommy Touchton
The James W. Warren III Family
Diane and Howard Williams
Dr. and Mrs. Bob Yelverton

In Memory of Elysa Norona

Leah Dragotti

In Memory of Jean Thibault Pallardy

The James W. Warren III Family

In Memory of Rose Ploszek

Robin and Ted DeLaVergne

In Memory of Kevin Rado

Anonymous
Paula and Mark DeSpiegler
Glenda Evans
Nancy L. Fernandez
Paul Harvey
Laura Edwards Julien
Kim Martinson
Deana L. Nelson
James Ortega
JoAnn Palumbo Shea
Donald A. Smith, MD
Rita C. St. Clair
Bob and Darlene Young

In Memory of Hafiz M.A. Rahman, MD

Edna Broyles
Medical Staff of Tampa General Hospital

In Memory of Violet Mae Rigby

Sabra A. Carl

In Memory of Jean Rigsby, CRN, BSN

Joanna Singleton

In Memory of Carl D. Riggs, Sr.

Patricia B. Riggs

In Memory of Frank Sammer

Catherine Sammer

In Memory of Midge Silverfield

Robin and Ted DeLaVergne
The James W. Warren III Family

In Memory of Stam A. and Marguerite L. Stathis

Gloria S. Bagli and Guy V. Bagli

In Memory of Sandra Stott-Kessler

Deana Nelson

In Memory of Jim Thomas

Robin and Ted DeLaVergne
Julianne McKeel

In Memory of John Thompson

GTE FCU Charitable Foundation

In Memory of James C. Trezevant

The River Foundation

In Memory of Jau Tsau

Marjorie L. Bishop
Lana Breese
Betty C. Burt
Robin Delavergne
Bonnie M. Hart
John and Maureen Odgen
Deana L. Nelson

In Memory of Jamie N. Tyson

Mrs. Ray Cothran
Ralph and Susan Ford

In Memory of Christine Vandekieft-Tipton

Jennifer and Michael Briggs
Mark and Kathleen Conrad

In Memory of Estelle Rosas Versaggi

Diane and Davis Schuster and their wedding guests

In Memory of Elyse Walker

Bay Area Cardiology Associates, P.A.
Millie Beeker and Elaine Adams
Charles F. Bombard
Lois Dison
Gregory Gaar, MD
Laura E. Julien
Tampa General Hospital Medical Staff
Janis M. Sanders
Jack Stone
Kara Wierzbowski

In Memory of Halyna Wolosheniuk

Gregory Gaar, MD

In Memory of George Woodham

Robin and Ted DeLaVergne

In Memory of Augusta Woods

Sadie Burt
Robin and Ted DeLaVergne
Adele and Richard Clarke
Harrison and Tom Giddens
Gwyn and Mark Schabacker

In Memory of Joe Wyatt

Chad Elledge
Employees Benefit Trust Fund
Robert J. Percy
Marie and David Ward

In Memory of Ruth Ley Cooper Wynne

Robin and Ted DeLaVergne
The James W. Warren III Family

In Memory of Hope Zambito

Edna Broyles

In Memory of Tom and Mary Zambito

Edna Broyles

2009 Foundation Donors

Gifts of \$200,000 and above

John H. Sykes Foundation, Inc.
Don and Erika Wallace Family Foundation

Gifts from \$100,000 - \$199,999

Richard and Cornelia Corbett
Jeff and Julie Wooley

Gifts from \$50,000 - \$99,999

Anonymous
Ted and Marty Couch
Carter B. McCain and The William A. Gregory Jr. Foundation
Ronald McDonald House Charities of Tampa Bay
Rothman Family
Skanska USA Building, Inc.
Tampa Bay Lightning and Lightning Foundation

Tampa General Hospital Auxiliary
The USAA Foundation

Gifts from \$25,000 - \$49,999

Barracks Road, Inc.
Borrell Electric Company, Inc.
Buchanan Ingersoll & Rooney PC
Dorothy Thomas Foundation, Inc.
Dr. John Sinnott Fund for the Advancement of International Medicine
A. D. "Sandy" and Dottie Berger MacKinnon
Gene and Patsy McNichols and Family
Radiology Associates of Tampa, P.A.
Ruffolo, Hooper & Associates, MD, P.A.
Tom and Kathy Shannon Family Foundation, Inc.

The Honorable and Mrs. David A. Straz, Jr.
SunTrust Bank

Gifts from \$20,000 - \$24,999

Florida Orthopaedic Institute, Inc.
Eleanor and Buck McInnis
Morrison Healthcare Food Services
Barbara B. Romano
The Yerrid Foundation, Inc.
Verizon Foundation

Gifts from \$15,000 - \$19,999

Anonymous
Blake Casper and Caspers Company
The Estate of Kenneth Howard
I.B.E.W. Local Union No. 108
Pamela & Leslie Muma Family Foundation, Inc.
TECO Energy, Inc.
John and Susan Touchton

Gifts from \$10,000 - \$14,999

The Bailey Family Foundation
Clark and Glenda Barlow
Dick and Lea Beard
Michael and Linda Connelly
Feld Entertainment, Inc.
Devanand Mangar and Florida Gulf-To-Bay Anesthesiology Associates, P.A.
Richard Gonzmart
H. Lee Moffitt Cancer Center & Research Institute
Gary and Margo Harrod and Harrod Properties



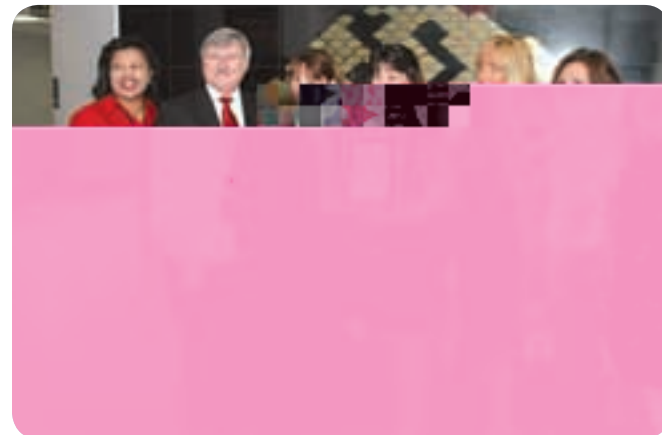
TGH employees, Celia Ryan, Kathy Godfrey and Betty Risk of medical audit pooled their money to buy a \$100 Gala raffle ticket and split the grand prize of \$10,000, presented by TGH Foundation Executive Director Robin DeLavernge (2nd from the right).

Harvard Jolly, Inc.
Rick and Jeanie Kouwe
KPMG LLP
L.V. Thompson Family Foundation
Medical Staff of Tampa General Hospital
The Bank of Tampa
The Elan Group, Inc.
USF Health Department of Pediatrics

Gifts from \$5,000 - \$9,999

A.R. Savage & Son, Inc.
Mike Azzarelli
Bacen & Jordan, P.A.
Baird Foundation
Baldwin Connelly Group, LLC
Peter and Christi Barli
Barr, Murman & Tonelli, P.A.

BCH Mechanical, Inc.
The Beck Group
Stephen G. Brantley, MD
Brophy Contracting, Inc.
Richard and Adele Clarke
Creative Recycling Systems, Inc.
Edwards Lifesciences, LLC
Anthony and Julie Everett
Sol. J. Fleischman, Jr. – Fleischman Garcia Architecture
Florida Pediatric Associates
The Frankle Family
Gresham, Smith and Partners
Ron and Eleni Hytoff
IBM Corporation
Kimmins Contracting Corporation
Richard Keating
Kraft Construction Company, Inc.



The Family at GTE Federal Credit Union (left to right), Terrie Wade, Barry Artis, Linda Thompson, Trish Miller, Kim Bevis and Kelli Sabourin, participated in the Tree of Life Ceremony in memory of JohnThompson.

Michael and Arlene Lia
LifeLink Foundation
McCann & Baird Flooring Service, Inc.

McCumber, Daniels, Buntz, Hartig & Puig, P.A.

McEnany Roofing, Inc.

McKibbon Foundation

Melitta USA, Inc.

Merchants Association of Florida and MAF Collection Services

Julio and Trisha Muniz

Deana Nelson and Toby Hart

Publix Super Markets Charities

Rufus and Barbara Reitzel

Mitchell and Suzanne L. Rice

Chris and Anita Roederer

Joanna Singleton

John Singleton

Paul and Sherri Stanley

Susan G. Komen For The Cure

Joe and Suzanne Taggart

The New York Yankees Tampa Foundation, Inc.

The Pepsi Bottling Group

The River Foundation

G. Richard and Sandy Thomas

Walter Energy, Inc.

Wells Fargo Insurance Services USA, Inc.

Gifts from \$2,500 - \$4,999

Academic Alliance In Dermatology
Allen Dell, P.A.

Amalie Oil Company

Bank of America

Laura and Lee Bentley

Catherine Lynch Buckhorn, MD and Bob Buckhorn

Charles and Barbara Caldwell

Culbreath Family Foundation, Inc.

Janet Davis

Robin and Ted DeLaVergne and DeLaVergne and Company

Ryan Companies US, Inc.

Cheryl and Joe Eagan

Florida Investment Advisers

Andrea and George Gramling

The Guyton Family

Sally H. Houston, MD and Jamie Scarola

Howard's Electrical Service

James and Amy Shimberg Charitable Trust

Les and Judy Smout Foundation, Inc.

Lucy C. Love, MD

Dr. and Mrs. Devanand Mangar

Jean Mayer

John and Maureen Ogden

Ronald and Ginger Oliver

Judith M. Ploszek

Reeves Import Motorcars

David and Jenny Robbins

Rooms To Go and Rooms To Go Kids

Squire, Sanders & Dempsey

Stericycle, Inc.

Patricia Sullivan

The Joy McCann Foundation, Inc.

Trinity Construction Management, LLC

Volt Air

The James W. Warren III Family

Mr. and Mrs. Richard Wilds

Jerry and Jane Williams

Gifts from \$1,000 - \$2,499

720 South Howard, LLC

Dr. Michael Albrink and Dr. Karen Wells

June and Mike Annis

Astellas Pharma US, Inc.



Chris Heath (right) and Ben Whittaker ran across Florida in five days to raise money for cancer programs at TGH as a tribute to Chris Heath's father, the late Air Vice-Marshal (British Armed Forces Royal Air Force) Mike Heath.

Kyle and Michele Bailey
Lowry and Jennifer Baldwin
Bayshore Technologies, Inc.
McIver S. Berner
Thilo and Betsy Best
Blue Cross Blue Shield of Florida
John and Emily Bond
Albert L. Bonfe
Dr. and Mrs. Victor D. Bowers
Evelyn Bowles
Dr. and Mrs. Irwin Browarsky
Edna V. Broyles
Mark and Kathleen Campbell
Drs. Derry and Margarita Cancio
CapTrust Financial Advisors
Dr. and Mrs. David Ciesla
Complete Floor Care Solutions
Bruce Coon and Family
DACCO, Inc.
Dr. and Mrs. William S. Dalton

Margaret E. Davis
Harry and Nancy de Waart
Dave Devine
Diaz Fritz Isabel
Mr. and Mrs. Lawrence Dimmitt, III
Richard J. and Francine Dobkin
Jeanne Dowdle
Loren and Paula Dyer
Anthony D. Escobio
Louise Lykes Ferguson
Oslec and Gisele Fernandez
Ellie and Sam Fishman
Joyce and Allen Fisk
FKQ Advertising & Marketing
Florida Cardiovascular Institute, P.A.
Funding Factory
Gray Robinson Attorneys at Law
Harrison and Tom Giddens
Maja G. Gift
Kelly Glass



TGH employees gathered for the opening of the Employee Garden Retreat which was funded through the 2008 Employee Campaign.

2009 Foundation Donors

Glazer Family Foundation
 Mr. and Mrs. Henry Gonzalez, III
 Mr. and Mrs. Jim Goodwin
 Drew and Betsy Graham
 Jean and Tom Grattan
 Dr. Mitchell Greenberg and Family
 GTE FCU Charitable Foundation
 Frank and Patricia Hancock
 Haskell Termite & Pest Control
 Joe Elena and Gene Heinz
 Rosemary Henderson
 Holloway's Farm Supply
 Hook and Ladder Brewing Company
 Hospira, Inc.
 Howard & Sons Plumbing, Inc.
 Sherrill W. Hudson
 Hughey Foundation
 Amy Hull
 Ikaría

Mr. and Mrs. Michael P. Jacob
 JS Turner Family Foundation
 Dr. Brenda Junco and James
 Kilcoyne
 Pete and Jan Karamitsanis
 Karla Kirkwood
 Lennon Family
 Dr. John Leone and Family
 Dana Ludwig
 MacDill Firefighter Association
 Denise and Skip Mahaffey
 Veronica Martin
 Mrs. F. Graham McKeel
 Danita McKibbin
 Merit Professional Coatings
 Stephen Meyers
 Anne and Hal Mullis
 Francine and Park Newton
 Mark and Debbie Nouis

Nova Biomedical
 Ed and Linda Oelschlaeger
 Dr. and Mrs. Charles Paidas
 Ronald J. Peterson
 Jan K. and William R. Platt
 Protocol Communications
 and Data, Inc.
 The Quarles Family
 Jessica Raia-Long
 Ranon & Partners, Inc.
 Becky Hewit Rauenhorst
 Regions Bank
 Restocon Corporation
 Dr. and Mrs. Alexander S.
 Rosemurgy, II
 Michael and Cindy Rosier
 Bruce and Adajean Samson
 Edward and Becky Savitz
 Gwyn and Mark Schabacker
 Ann Lindell Sheppard and John
 Sheppard
 Dana L. and Debra Shires
 Siemens Building Technologies, Inc.
 Carol Mathews Smith
 Smith Seckman Reid Inc.
 Mr. Ross Stoddard
 Susan Sykes
 Tampa Bay Plastic Surgery, Inc.
 Tampa General Hospital Patient Care
 Leadership Council
 Tech Management, Inc.
 Stella Ferguson Thayer
 The Baxter International Foundation
 Matching Gifts



Kelly Glass (front row, 2nd from right) and her team from the TGH Facilities Department raised over \$20,000 for the family funds in the TGH Foundation.

The Integra Foundation
 Debbie Thomas
 Thoratec Corporation
 Holly and John Tomlin and Tomlin
 Tested Staffing
 Lee and Tom Touchton
 Trenam Kemker Law Firm
 VALIC
 Karen Van Cleaf
 Jeffrie and Harry van Loveren, MD
 Buz VerPlanck and Carter
 & VerPlanck, Inc.
 Virginia Hill Endowment Fund
 David and Linda Ward
 Nell Ward
 Weekley Schulte Valdes, LLC
 Morris Weinberg and Rosemary
 Armstrong

Kimmins Terrier Foundation, Inc./
 Fran Williams
 Jeff and Val Mount
Gifts from \$500 - \$999
 Anonymous
 Aflac
 Carlos J. Alfonso
 Mary E. Allen
 Jon, Kerstin and Chris Andrews
 Gary and Donna Arnold
 Karen and William Arnold
 Richard Ash
 Robin Atkins
 B&G Painting, Inc.
 Sherri and Alan Badia
 Joe and Lori Baker
 Baptist Health System



Members of the Plant High School Baseball Team take a break from practicing for the state championship by visiting with patients in the Children's Medical Center.

Rev. Dr. William J. Baugh
 Bimeco, Inc.
 Kent and Jane Blocher
 Mr. and Mrs. Charles F. Bombard
 Sue Boyette
 Valencia Broxie
 Bryant, Miller & Olive, P.A.
 Dr. and Mrs. Donald Burgess
 Gary R. Calhoun
 Ron and Mary Jane Campbell
 Dr. and Mrs. Paul A. Chervenick
 Tamara Claridge, Pharm. D.
 Velva W. Clark
 Mandelyn Cloninger
 Anthony and Cindy Coney
 David Dalrymple
 Michael J. Daniels
 Giuseppa DeAngelis
 Alice and Jerry Dingle
 Pam and Brett Divers

Glenda Evans
 Mary Lee Nunnally Farrior
 Daniel G. Fields
 Firefighters Charitable Foundation
 Lynn and Stephen Fuharty
 Joan K. Fontana
 Linda Fuschini
 Paul and Suzanne Gabos
 Mary Garand
 Cathy Gingras
 Grainger Matching Charitable Gifts
 Program
 Juli and Daniel Greenwald
 Denise Grogg
 Grow Financial Federal Credit Union
 Mr. and Mrs. Keith Harvey
 HealthEdge Investment Partners,
 LLC
 The Lewis and Sally Hill Charitable
 Foundation, Inc.
 Scott and Barbara Hurst

IBM International Foundation
 J & J Plumbing of Florida, Inc.
 Karen Jacobson
 Frank and Shelly Jakes
 JET I.C.U.
 Mary Ann Joy
 Mary Ellen Keating
 Robyn Kellems
 James J. Kennedy, III
 Myra Kidwell
 Ted Lancaster
 Linda Linderbeck
 Rev. Wayne Maberry
 Macfarlane Ferguson & McMullen,
 P.A.
 Kenneth L. MacRae
 Martha B. Politz Memorial Fund
 Janet and John McEney
 Janie and Ken McIlvaine
 Stephen McKeeman
 Kelle Leigh Melvin
 The Mendez Foundation
 Christopher Moak
 Kandace K. Mohar
 Susan Moore
 Philip Morgan
 Berdina and Tommy Morgan
 Nancy J. Mullen
 Jim and Sandy Murman
 Georgeann Nikolich
 Ann and Frank Nixon
 Sarah E. Nolan
 Randy Ockman
 Ron Opp
 Optioncare
 Outreach Patient Advocates



Photographer Stacey Woods donated her time and talent to take photos (like this one of Danielle Kennedy, a nurse at TGH, and her son Cameron) to decorate the renovated postpartum unit.



The TGH Foundation provided an outing to Lowry Park Zoo for pediatric rehabilitation patients, accompanied by TGH speech and language pathologist Kerrie Rigberg.

Amy and Joe Paratore
 Preferred Collection and
 Management Services
 Lucila E. Ramiro, MD
 Betty Ramsey
 Ranon, Inc. General Contractors
 Stan and Bonnie Rice
 Julian Rice
 Kathy and Doug Rothschild
 David J. Samuels
 John Scolaro
 Jeff Serpico
 SESCO Lighting
 Joann Shea
 Dr. and Mrs. John T. Sinnott, IV
 Thayer and Tready Smith
 David "Tanker" and Tammy Snyder
 Rita St. Clair
 Shelley Stallworth
 Mr. and Mrs. Robert J. Starr

Mike and Deborah Foley
 Missy and Corey Steadman
 Jack Stone and Family
 Major General William and Donna
 Studer
 Tampa General Hospital Nurse
 Practice Council
 Brian and Debbie Taub
 Terry and Colette Tsavoussis
 Judi Tsiguloff
 U.S. Foodservice, Inc.
 Rick and Denise Vander Werf
 Betty Viamontes
 Waste Management
 The Watters Group of Tampa, Inc.
 Susan White
 Joe and Catherine Christie Zanghi
Gifts from \$250 - \$499
 Anonymous
 Candace Amato

2009 Foundation Donors

Catherine and Dale Andrews
 Brenda Angall
 ASAP Capital
 Gloria S. Bagli and Guy V. Bagli
 Vicky L. Baker, RN
 Kassie Basnight
 BayCare Home Care
 Patricia Bennett
 Janet L. Booth
 Roger L. Bowen
 Trish Brooks-Campbell
 Deborah Bruton
 James and Elizabeth Bryan
 Martin S. Burgess
 Don and Campbell Burton
 Lindell Busciglio, MD
 Catherine L. Carrubba, MD
 Debby Chambers
 Terrell and Joe Clark

Mr. and Mrs. James W. Clarkson
 Jon G. Cooley
 Susan E. Cottrell
 Ann Snow Curry
 Lucretia S. Curvat
 De Rosa Volunteer Fire Dept. Inc.
 Crystal and Jack Deal
 Kim and Phil Dingle
 Dr. and Mrs. Garth R. Drewry
 John Dunn
 Harry and Leah Engelstein
 Existing Structures Engineering, Inc.
 Graham Faught
 Lee Gasnick
 Kelley Gonzalvo, R.N., BSN, CCRN
 GoodSearch
 Roy M. Griffin
 Robert and Rhonda Hall
 Richard Harrison

Nancy Davis Hawes
 Norma and Lazaro Hernandez, MD
 Hillsborough County Appeals Board – Land Use
 Molly Holt
 Rogers and Susan Jane Howard
 Robert C. and Ruth L. Hudson
 Hudson Manor
 ICU Medical, Inc.
 INVACARE
 Katherine Judd
 Celeste Kallenborn
 Timothy J. and Ann M. Keating
 Barbara Keen
 Dale Knight
 Dan Kresge
 Michael and Melissa Jo Laven
 Olga L. LeBron
 Morris and Mildred Liebhaber
 Jeanette Lonas
 Tracey Lund
 Susan Machalek
 Magee Rehabilitation Hospital
 John Makal
 Greg and Cecelia Martin
 Steven and Laurie McGaffigan
 Teresa McReynolds
 Daniel Mecca, III
 Joseph and Debra Meyer
 Ryan Miles
 Lynn Modlin
 Betty A. Moore
 Sherry Morris



Craig Sher, (2nd from right), of the Tampa Bay Lightning ownership group and Circus Patrons' Party sponsor, welcomes Kenneth Feld, Nicole Feld and Juliette Feld.

Lou Ann Morriss
 Sue Murphy
 Net Media, LLC
 Mr. and Mrs. Altren W. Neumann, III
 Newcomer Construction
 Patricia Osborne
 Nicholus Pavel
 Phoenix Architectural
 Jim and Sandy Pieper
 Judy Poff
 Gerald Principe
 Edwards A. Repins
 Georgianna J. Rice, RN, CCRN
 Linda Ridenhour
 Karyn and Lance Ringhaver
 Kim and Kelly Rogers
 Catalina Roman
 Elizabeth M. Saunders

Diane and David Schuster
 John Scott
 Shumake Architecture, PA
 Drew Silverman
 Spectra Contract Flooring
 Nancy Speed
 AVM Graham Stacey, MBE
 Standard Textile Co., Inc.
 Stepps Towing Service Tampa, Inc.
 Amy Stokes
 Keith B. Stott
 Joan and Jorge Supkay
 Tampa General Hospital Advanced Practice Council
 Tampa General Hospital Patient Services Executive Committee
 Theodore C. Taub, Esq.
 Mr. and Mrs. Charles W. Talcott



Four-time Low Gross winners (left to right) Chad Harrod, Greg Iglehart, Steve Staggs and Gary Harrod.

Peggy Thompson
 Sara Thrower
 Mary Trevino
 VACO
 Mr. and Mrs. Tony Venezia
 Pawan E. Verma
 WebbMason, Inc.
 Julia Wilkinson
 Scott Williams
 Tracy Wood
 Robin Zocchi

Gifts from \$100 - \$249

Anonymous
 AAA Auto Club South
 Ace Relocation Systems, Inc.
 Mark Adams
 Luis Alicea-Santiago
 Ronald and Dali Allado
 Barbara J. Allen
 Lisa Allen
 Celillon Alteme

American Eurocopter
 Scott and Karen Anderson
 Simmie Anderson
 Rosemary and Tim Anderson
 Devon Antczak
 The Archerd Company
 Armando Arroyo
 Stephanie Austin, R.N.
 Irma B. Avery
 Jason Bailey
 Bonnie Baker
 Estee Baker
 Donna and Robert Ball
 Gregg A. Baran, MD
 Robert and Patricia Barlow
 Anette Bauman
 Bay Area Cardiology Associates, P.A.
 Bay to Bay Balancing, Inc.
 Patricia G. Bean
 Maureen and Sam Beauregard
 Millie Beeker

JoEllen Beers
 Margaret Belcher
 Leketia Bell
 Krystyna M. Berger, M.H.A., MT/ASCP
 Lauren Berner
 Judy Best
 Larry Bevis
 Anne Blevins
 Sue Bliss
 Debbie Boldt
 Patricia W. Bornick
 Jeffrey Bowen
 Steven Boyd
 Karen J. Bradford
 Brennen Medical
 Hank Brenner
 Scott Briscoe
 Jessica Brower
 Deborah Brown
 James Cary Brown
 Booky Buchman
 Trashona Burnett
 John H. Burnham
 Grymes Cannon
 Reuben Cansler
 Ed Carbone
 Mark and Cynthia Carron
 Beata C. Casanas, MD and Robert J. Casanas, MD
 Celida Castillo
 Judy and Flake Chambliss
 Patricia C. Chandler
 Jaimet Chinae
 Cheryl E. Croquette
 Janis Christie
 Sharon Clark



Dick and Lea Beard at the Annual Dinner.

Alexis Clarkson, P.T.
 Kyle Collins
 Stephanie Comer
 Deborah and Douglas Cone
 Mike Connor
 Bonnie Conrad
 Patty Conze
 Deborah Cornelius
 Desiree Cottrell
 Helen Cottrell
 Carl Craft
 Creative Clay, Inc.
 Mr. and Mrs. Allan Crooker
 Fortrella Cummings
 Dr. and Mrs. Timothy J. Curry
 John and Audrey Custer
 Nahiddeh Daemi
 Judge and Mrs. Paul Danahy
 Derek M. Daniels, Esq.
 Eileen Danner
 Anthony J. D'Aquila

Agnes A. Darland
 Mr. and Mrs. Barry Lee Darling
 Anita Davis
 Virginia C. Davis
 Amy Dean
 Annis M. deBrigard
 David DeCarvalho
 Don and Jan DeFosset
 Ray G. Delphey III
 Lori L. Desmond
 Alice Dinsmore
 Laurie Dixon
 Priscilla Domisiw
 Ronald and Linda Donalson
 Christine Douglas
 Kimberly Dunbar
 Barbara and Craig Duncan
 Melanie Durham
 Wes Eaves
 Employees Benefit Trust Fund
 Engineering Professionals, Inc.



Thilo and Betsy Best with Kim and Phil Dingle, 2007 – 2009 Foundation Board Chair, enjoying the Gala festivities.

2009 Foundation Donors

- | | | |
|------------------------------|-----------------------------------|-------------------------------|
| George Erck | Edward Gandy | Justin Hall |
| Marilyn Espino-Maya | Tom Gates | Kelli Hanratty |
| Cecile Waterman Essrig | Steve Gatto | The Harrell Family |
| Kim Estes | Marc and Shannon Gauthier | Mr. and Mrs. Robert A. Harris |
| Stacie S. Eubanks | Donna Gebbia | Chad Harrod |
| Eurocraft | Steven and Hazel Gerencer | Dennis E. Healey |
| Dominick Ferello | Mr. and Mrs. D. Richard Gibbs | Vann Herring |
| Maria Fenanda Fernandes | Kimberly Giddens | Dr. and Mrs. Alfred Hess |
| Robert A. Fiallo | Tracie L. Gilbert, R.N., C.C.T.N. | Hill Ward Henderson |
| Ellen and Herb Fiss | John and Ruth Giordano | Sandy Hillier |
| Richard F. Fitzgerald | Girtman & Associates, Inc. | Fraser Himes |
| Irvin and Dolores Fleischman | Manuel Glaros | Hoar Construction LLC |
| Linda and George Fleming | Maribel Gonzalez | Dr. and Mrs. Mitchel Hoffman |
| Paul L. Ford | Teodosio Gonzalez, Jr. | Petrona Holloway |
| Troy Fowler | Dr. and Mrs. Americo Gonzalvo | Arthur S. Huchro |
| Mr. Frank Fralick | Jason and Jan Gorrie | Joy Lynn Hughes |
| The Frankle Family | Robert Gunsaulus | Margo Hunt |
| Jarrett Franklin | Ray and Lucy Gurka | Greg Iglehart |
| Jamie Gagne | Arlynn Haarer | Thresiamma Illikal |



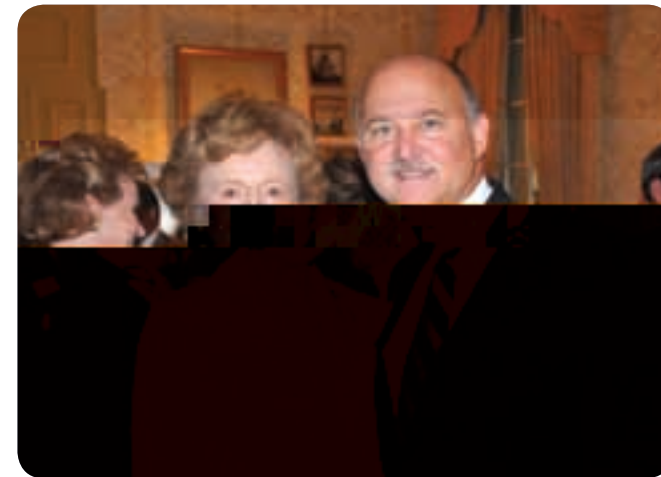
Sol Fleischman, Les Muma, Tom Gates and USF Athletic Director Doug Wollard (left to right) take a break during the golf tournament.



Foundation Trustee and past TGH Medical Staff Chair Dr. Steve Brantley (3rd from left) and friends were prepared for the Garden of Eden.

- | | |
|---|---------------------------------|
| Charlie and Brenda Ketchey | Dara and Russell Lowrey |
| Kindred Healthcare Operating, Inc. | Steve and Julie Lux |
| Anthony F. Kirkpatrick, MD | Allison Beard Luzier |
| John Knab | Sjonne Mabbott |
| Sharon Knight | Paula MacDonald |
| Anna and Joseph Kokolakis | Arthur R. MacFadden, Sr. |
| Karlita Konnerth | James Maita |
| Barbara Korb | Ted Mangano |
| Elaine Larose | Jose Marotta |
| Jean Leban | Dushan and Mary Martinasek |
| Ryan Lee | Nick Martini |
| Richard and Kinter Lennon | Mary Pat Martley |
| Willie Mae Leverette | Rosemary and Derrill S. McAteer |
| Lincoln Moving & Storage of Tampa, Inc. | Robert M. McCoy |
| Charlotte J. Logan | Heather McCranie |
| Joann Loiselle | April and Ryan McDonald |
| Jose M. Lopez | Christopher McFarren |
| | D. Eric McKechnie |

- | | | |
|--|-----------------------------------|--|
| S. Douglas McKeel | Denise A. Muth | Mart and John Pieper |
| Kelly McKelligott | Derek Neal | Tim Pierce |
| Sharon McLaughlin | T. Corey and April Neil | Dr. and Mrs. C. Pigmon |
| Mechanical Engineering Solutions, Inc. | Ashley Newhalter | Craig Pitts |
| Maria Lourdes Mendez | Mrs. Stanford J. Newman | Calvin and Donna Pletcher |
| Mill-Rite Woodworking Company, Inc. | David and Denise Nichols | Frederick and Mary Plumb |
| Anne M. Mills and sons, Court and John | Oak Hills Golf Club and Staff | Dr. and Mrs. Jerry Poklepovic |
| Moeller Family | Patricia Ogden | Steve Ponce |
| Kathy Moll | Inger Oliver | Mr. and Mrs. Vincent Poxon |
| David Monroe | Dr. and Mrs. David J. Orban | Precision Electrostatic |
| Vicki L. Moon | Mr. and Mrs. O'Rourke | Momir Predic RT (R) (CV) (ARRT) |
| Michael Moschetto | Ann M. Pacheco | Christopher Prentice |
| Scot Moser and Family | Palm Pavilion of Clearwater, Inc. | Psychological Assessment Resources, Inc. |
| Olivia Moses | Dr. and Mrs. Ajay Pancholy | Bridget Pugh |
| Shawn Moynihan | Patricia Pendry | Denise Quesada |
| Joan Muldoon | Janette Penman | Teresa Redus |
| Kathy Mungar | Raul Perez | Timothy R. Reeve |
| Jennifer Murphy | Chuck Peterson, Jr. | Refurbished Office Furniture |
| Robert Daniel Murphy | Doris W. Pfuhrer | Cindy Rich |
| | Carole Piccorelli | Elizabeth Richard |
| | Carmelita Piepenbrink | Karyn Richardson |



Past Foundation Trustee Shirley Savage Knight with her son, Trustee Arthur Savage.



Pam and Les Muma are all smiles after taking a sledgehammer to the wall, symbolizing the beginning of construction of the Jennifer Leigh Muma Neonatal Intensive Care Unit.

- | | |
|---|--|
| Ms. Janis Sampson | Kris Spain |
| Dr. and Mrs. Roy W. Sanders | Sandie Spangler |
| San's Pizzeria | William N. Spellacy, MD |
| Maria Santeiro Robbins | St. Pete Association of Firefighters Benevolent Fund |
| Judith C. Santiago | Stephen Stagg |
| Frank Schmeer | Deborah Sternlicht |
| Doris Schmidt | Kathy Stopak |
| Steven Schwartz | Jim Sturman |
| Lansing C. Scriven, P.A. | Bretta and Don Sullivan |
| Elliott Greenbaum and Seaboard Cold Storage | Superior Structures, Inc. |
| Steve and Ellen Short | Ann Swanick |
| Stacey Silber | Jon Swensson |
| Felipe and Irene Silva | Hewett Tarver |
| Betty Smith | Tate and Stacy Taylor |
| David J. Smith, MD and Nancy Smith | The Brown Law Offices, P.A. |
| Donald A. Smith, MD and Laurie Woodard, MD | Mr. and Mrs. I. Clay Thompson, Jr. |
| Julie C. Smith | Richard and Susan Tilley |
| Donna J. Snyder | Sherrill M. and Paul Tomasino |
| | Sabrina Toombs |
| | Elsa Trinchera, RN |

2009 Foundation Donors

Angelique Tsau Scott
 Chris and Georgette Tsavoussis
 United Commercial Travelers
 University Area Community Development Corp.
 University Medical Service Assoc., Inc.
 Enrique J. Urrutia, MD
 Anna Valencia
 Helen and Panos Vasiloudes, MD
 Sandra Vaughn-Stevens
 Roy Vega
 Daniel Ventimiglia
 R.R. Vijayanagar, MD and Kathleen Vijayanagar
 Wachovia Foundation – Matching Gifts Program
 Richard C. Walker, Jr.
 Sarita Watford
 Todd Webster

Ronald and Deborah Weisser
 Charles and Aida Weissman
 Dr. and Mrs. Steve Weissman
 Evelyn T. Wellhausen
 Cheryl Wessel
 Jennifer Wessels
 West Tampa Glass Company
 Carlina White-Yousouf
 Richard and Maria Whitney
 Jon and Kara Wierzbowski
 Mr. and Mrs. J. Hulon Williams, III
 Sandra L. Williams
 Chad Wiltz
 Matt Winn and Kelly Hughes
 Troy and Stephanie Winn
 Timothy R. Wise
 Veronica E. Wlcek
 Doug Woolard
 Emma Wright

Robert Young
 Susana L. Zachry
 Stavros Zoumberos, Anatomic Path
 Dr. Bruce Zwiebel

Gifts up to \$99

Anonymous
 Flency Abraham
 Marisol Abrego
 Cathy Accurso
 Ana C. Acevedo
 Helen L. Adams
 Eduardo Agapito
 Mark J. Age, M.T.
 Josefina Agostini-Rivera
 Jillian Albano
 Bettie Alexander
 Lydia Ali
 Karen Allie
 Pauline Alookaran
 Sonia Alvarez
 Moustafa Aly
 Ruth Anderson
 Steve Anderson
 Maggie Arroyo
 Avril Asson
 Rod L. Atkins
 Jessica Austin
 Charlyn Austria-Marasco
 Aide Baez
 Frank Baker
 Daryl J. Barker, RNC.
 Donald and Dianne Barrowman



During the golf tournament Awards Dinner, Dr. Alex Rosemergy gave the players an update on new developments in the USF Simulation Center at TGH.

S. Michele Barton
 Wayne Basford
 Joe Bastasich
 Claytonia B. Bates
 Dawn Bayless
 Darlene E. Baysa
 Brittany Beaudoin
 Helen M. Beckett
 Patricia Benedikova
 Icylyn Bennett
 Justin R. Bennett
 Mrs. Marti Bennett
 Vivian Benson
 Annetta Bersche
 Candace J. Billingsley
 Marjorie L. Bishop
 Robert M. Bishop
 Gina Blum

Diane Bockus
 Linda M. Boetcher
 Rita Bogush
 Deborah Bono
 Martha Boonyapricha
 Lisa Bornstein
 M.J. Boteo
 Suzanne Lowry Botts
 James and Mia Boutzoukas
 Patricia Bowman
 William H. Boyd
 Tom Bracewell
 Mary Branch
 Lana Breese
 Danielle Brennan
 Chisa R. Briggs
 Jennifer and Michael Briggs
 Shirlei Brodner



Marty St. Louis deals blackjack for guests at the Tampa Bay Lightning Foundation's Glitz & Sticks benefiting the Pediatric Intensive Care Unit.

Carolyn Brooks
 Cyndi Broughton
 Angela Y. Brown
 Derrick Brown
 Mary Brown
 Leslie D. Brunell
 Nancy Buck
 Ayron Burden
 Marchelle Burgess
 Arselio Burgos
 Namon Burke
 Grace Burney
 Sadie Burt
 David Butler
 Roberto and Rosa Cabrera
 Maria Canares
 Carlos Cano
 Tammy Capullari
 Ruby Carbonell
 Violeta M. Cardosa
 Sabra Carl

Karen Carmody
 Hayley Carr
 Amy M. Carrasco
 Amy L. Carreras, RN
 Meredith Carro
 Jane and Haynes Carswell
 Lina Carter
 Robert E. Carter
 Tim Carver
 Lindsay N. Cashion, III
 Frank Castillo
 Edyt Castro
 Felecia Causey
 Sandra Centeno
 Bernie W. and Michele R. Chandler
 Marie Charles
 Norbel Charley
 Mary Chastain
 Tony Chavero
 Brian Chester
 Steven Chew

Gina Chiappone
 Catherine Chidester
 Linda Chivari
 Yvette Ciccarello
 Anna Marie Ciserano
 Sheri Clark
 Denita Clarke
 Freddie L. Clayton, Jr.
 Vivian Clements
 Charles E. Cleveland
 Judy Cohen
 Catherine Coley
 Jacklyn Collazo
 S. M. Colvin
 F.B. Concaugh, RN
 Mark and Kathleen Conrad
 Mrs. Robert H. Cooley
 Elsie Corbitt
 Rob Corden
 Teresa Corden
 Jonathan A. Cordero
 Michele Cordova
 Carrie Coronado
 Yolanda Corso
 Mrs. Ray Cothran
 Lynda Coto
 Julie A. Coudurier
 Amanda Martinez Crabbe
 Diane Crecy
 R. Csekits
 Aurea and Rodolfo Cunanan
 Cunningham Family
 June Curley
 Lillie M. Cutler
 Matthew Daniels
 Angelia D. Davis



Bob Buckhorn, Dr. Cathy Lynch and TGH Board Member Lanse Scriven at the Annual Dinner.

Ivey Davis
 Loine S. Davis
 Susie Davis
 Elaine de Brigard
 Scott De Fraties
 Alice J. Deal
 Catalina Decaire
 Leonida DeGuzman
 Gary DeJean
 Mina DeLaVergne
 Vincent de Leon
 Gail Deliso
 Heather DeLones
 Israel DelValle
 Rhonda S. Dermody
 Paula D. and Mark T. DeSpiegler
 Katherine Di Troia
 Mike and Bernadette Diamond
 Kenneth E. Dickens
 Crystal Diggs
 Cheryl and Mark Dillon

Emma Dimanlig
 Lois Dison
 Rowena Ditchon
 Darlene P. Dixon
 Angela Downing
 Todd Doyle
 Leah Dragotti
 Mrs. Mary F. Draper
 Sophia Dreshen
 Gerald Duckett
 Mandi Dunaway
 Kathleen Dunn
 Dyani Dyson
 Wanda Easton
 Waldo G. Egusquiza
 Chad Elledge
 Patricia Elledge
 Janet L. Elozory
 Susan H. Eminizer
 Marjorie Escobio
 Ilda Esfahani



Circus clowns lead a line dance during the Patrons' Party.

Joseph A. Evangelisti	Laura Foster	McKenzie Gerun
Teri L. Evans	Founders Garden Circle	Lisa Giblin
Lee and Ed Fain	L. Winston Freckleton	Ronda Gipson
Melanie Favors	James L. Frederick, Jr.	Kathy Gitzen
Theodore and Dolores Fedus	Tana Fredrick	Dada Pittman Glaser
Doreen Fernandez	Madelyn and Robert Frink	L.A. Glassman
Tracy L. Fields	Karen Fugate	Donna J. Gleeson
Denise Fife	Sheila Fulle	Robert D. Glover
Geri Figuero	Gregory G. Gaar, MD	Julie Goings
Ana Figueroa	Rob Gabordi	Shirley Golden
Lawrence and Linda Fikes	Dr. Jorge Gadea	Faith Goldman
Jessica L. Fillipovich	Eddie Gaines	Aristides Gonsalves
Alex Fink	Marco Gandy	Betty Goodwin
Jennifer R. Fisher	Joseph P. Gangi	Lisa Goodwin
Esther Flores	Douglas Gannon	Genera B. Gordon
Amanda Fontaine	Jeanie Garcia	Lydia Gottardi
Ralph and Susan Ford	Keelie F. Gardner	Elizabeth Grainger
Carol J. Foret	Paula J. Gatwood	Jamie Green
Maria J. Fortes	Jackie Gay	Tracy E. Green
		Dr. and Mrs. John N. Greene
		Stephanie Grimes
		Bill and Lori Gross
		Teresa Guarascio
		Tatiana Guerrero
		Dale Gullett
		Denise Haas
		Gayl and James Hackett
		LuAnne Hadfield
		Fernando Hall
		Keith Hall
		Cynthia Ham
		Maxine V. Hantak
		Rawnauld Harbajan

Shelton Quarles and Big Top Sponsor Don Wallace watch the children's activities at the Circus Patrons' Party.

Sonja M. Hardy, RN	Marilyn Herrera
James Harris	Doug Highfill
Bonnie M. Hart	Stacy Himert
Evely Harvey	Stephanie Ho
Paul and Rose Marie Harvey	Yvonne Hobot
Cecilia Hawthorne, LPN	Jackie Holland
Margie Hays	Amma Holmes
Tom and Rita Head	Dorothy Holton
David Heavey	Elizabeth Howard
Gina Hebert, RNC, CLC	Candice Howell
Stefanie Hemming	Donna Huff
Mauricio Henao	Kelly Hughes
Brittney Henderson	Lora Hulse
Anne and Tom Henderson	Mechelle Humbert
Darlene Hepburn	Anne Lester Hunt
Ana Hernandez	Lucian A. Hunter
Ricardo Hernandez	M-O.
Jennifer Herrera	44

Anthony Iadarola
 Ms. Jessica Inoa
 Nadine Ishtiaq
 Bill and Debbie Ismer
 Eric A. Jabour
 Kenneth Jackson
 Laqusia M. Jackson
 Evalina Jamilosa, R.N.
 Ann B. Jeffery
 Rosetta Jimerson
 Jose Jimenez
 Barbara J. Johnson
 Bernice Johnson
 Elaine M. Johnson
 Harry Scott Johnson
 Morris M. Johnson
 Juanese Johnson-Davis
 Aurana Jones
 Colleen S. Jones
 Karen Jones
 Patrick S. Jones

Sherri Jones
 Jason Jordan
 Sheila Jordan
 Andrea L. Joyce
 Fred Judy
 Tonta P. Junco
 Michael E. Kanter
 Susan Karakad
 Mary Ann Kasser
 Debora Keafer
 Jennifer Keane
 Vicki Kenyon
 Beth-Ann Kershaw
 Riaad Khan
 Teresa Kitchel
 Kathleen M. Koch
 Mercy Koshy
 Joe Kotvas
 Kuba Cigars LLC
 William and Jennifer Kuhl
 Mary K. Kutash, A.R.N.P.

Laurie Lackman
 Annabelle Ladia
 Lakewood Ranch Medical Center
 Richard P. Lambou
 Panagiotis Lambros
 Ann and Rob LaPlaca
 W. Patrick Lark
 Beverly and Curtis Larmon
 John Larosa
 Suzanna Larsen-Andux
 Linda F. Lawson
 Marian A. Lee
 Susan A. LeFave
 Dr. and Mrs. David Leibowitz
 Patrick Lennon
 Lundy Leonardo
 Brenda Lepinski
 Jack Leslie
 Nancy Lessard
 Limbana Lester
 Inna Levin
 Elizabeth Lewis
 Shamira Lewis
 Cynthia R. Lewis-Younger, MD
 Arturo Lievano
 Mr. and Mrs. Theodore Liswith
 Babs Lizotte
 David Z. Logan
 David Lopez
 Rhonda Lozo
 Jorayn Lundy
 Lisa Luster
 Carol and Dick Lynch
 Laureen Mack
 Teresa Mahan
 Nichole E. Makal



Circus committee member Samantha Warren (left) visits with Mike and Deborah Foley during the Circus Patrons' Party.

Michael Malone	Kathleen and John McGee
Frances L. Manali	Nicola McGinness
Lisa Manis, RN	Robin McVicker
Stacy M. Mann	Alice B. Means
Aldo Marano	Christian Mejica
Miya Marcus	Fernando Melendez
Jeannine Maridon	Maria A. Melendez O'Neill
Judy Markley	Amanda Melton
Emily Marks	Charles Melton
Deborah Martin	Michael Meo
Janice and Gary Martin	Ceve Mereles
Linda S. Martin	Katie Messerschmitt
Kim Martinson	Mr. and Mrs. Peter Millan
Joyson Mathew	Kim Miller
Harold and Marty Matz	Trinda Miller
Regina Maula	Shay Mincher
Charlene Mayle, RN	Brooke Mistretta, L.P.N.
Terrence McBride	Mr. and Mrs. Abeer Abdullah
Dave and Louise McClelland	Mohammad
Karen S. McDonald	Sophia Mohammed
Reverend Sabrina McGavock, BCC	Wayne Mondezie



Jeffrie and Dr. Harry van Loveren with Dr. Enrique and Pat Camporesi at the Annual Dinner.

2009 Foundation Donors

Dameka R. Montgomery
DeNice Moon
Mirta Moran
Dr. Shannon M. Moroney
Yvette Moss
Christian G. Mozes
Julian Munoz
Robert Murdock
Hirotake Naruse
Kathy Harry Natale
Daniel Navarro
Maite Nazco
Betty A. Nelson
Mr. and Mrs. Larry A. Nelson
William Newby
Jeffrey L. Newsome
Huong Nguyen
Nicole Nichols
Kimberly Nikolau

Michael Nikolau
Alfonso and Elisa Nixon
Kristina Nolte
Andrew Normand
Kathryn G. Oberholtzer
Winifred O'Conner
Gwen O'Flaherty
Rose Okwany
Christina O'Leary
Sonja Olson
Cynthia L. Orendorf
James Ortega
Jennifer Ostrom
Jasmine Page
Ivan J. Pantojas
Monique Papia
Willie Parks
Betty J. Parsons
Debra Parsons

Herman Bowen and Angelita Pascual-Bowen
Caroline L. Pate
Dharmesh Patel
Charles M. Payne
Sabeena Pazhukayil
Gloris Peace
Donna Peck
Aundrea Penny
Eliza Peppers
Robert J. Percey
Wayne and Marietta Perez
Amy Peterson
Sarah Pfeiffer
Samuel Pierre
Arturo Pine
Prestine Pinkney
Albertus Plynaar
Carol Poelker
Carla Poland
Grace Porter
Leticia Pou
Martha A. Price, MD
Stephanie Price
Leigh Ann Quinlan
Kevin Rado
Johnathan Ramirez
Edwin Ramos
Charulata Rao
John Reardon
Betty Reed
Thomas Reed
Kenneth P. Reid



Judge Tracy Sheehan shadowed Dr. Mitch Hoffman in the White Coat Mini-Internship Program.

Peter Retzko
Jennifer Reyes
Alicia E. Ricciardi
John David Rimel
Robert Ring
Louise Roberts
Kristy L. Robinson
Milagros Rodriguez
June Rogers
Blanca Rojas
Christel J. and Lowel M. Roman
Patty Roman
Rita Roman
Diocelis Rosabal
Judith O. Rosenkranz
Darlene Rossi-Diaz
Bruce Roth
Anna Rowe

Angela Ruiz
Lesley Rulli
Bob Rushworth
Kathy Saile
Ernest Salazar
Lorena Salem
Tony Salgado
Kristina Sallman
Leni Samuel
Ophelia Samuels
Steve Sanchez
Yamile Sanchez, RN
Laura Sandel
Melissa Sanderfur
Miguel Santamaria
Maria J. Santos
Heather Sawney
George P. Schanck, III



Dr. Carlos Martinez (left) enjoys the circus with his family.

Jeff D. Scully
Daniel Seedaire
Mr. and Mrs. Andrew Shackelford
Robert C. Shannon
David Shapiro, MD
Theresa Sharpe
Beth Shaub
Dianne Shepley
Bret S. Short
Manon Short
Elizabeth G. Shumate
Chinnell Simmons
Kimberly Simoni, RN
Nichole Skelton
Josephine Smith
Scott Smith
Tracee Smith
Rachel Solomon
Tony Ragano
Erica N. Spottford
Shelia A. Spowart
Diane Stahlbusch

Cheryl Starling
Andre Steadman
Letitia Stein
Janet and Joel Stephens
Clifton Stewart
Evelyn Stone
Sandra L. Stutzman
Linda L. Summers
Margaret W. Sumner
O. Linda Sweet
Mr. and Mrs. Anton Szeltner
Julia Tallant, R.N.
Tampa General Hospital Adult Step Down Unit
Tampa General Hospital Corporate Compliance
Tampa General Hospital Medical Intensive Care Unit
Tampa General Hospital Pastoral Care
Tampa General Hospital Strategic Services
Tamara Tate
Jeanette C. Taylor

Aubrey Teston
Tammy Therrien
Connie Thomas
James L. Thompson
Taylor and Marty Thorington
Phylliss R. Thurston
Mr. Stanislav Timofeev
Mr. Erik Tokos
Sonia Toledo
J. Xavier Tome
Dr. and Mrs. John Toole
Elsa Torres
Jose Torres
Eugenia Travis
Barbara Trujillo
Michael Tubbs
Terrence and Jennifer Tupy
Astonah Turner
Megan Tyson
Tara Valentin
David Vallejo
Derrick W. Vankampen
Catherine Varn
Stacey J. Vaughn
José Nelson Vila
Sam Visconti
Misty Waits
Rosemary A. Waldner
Elyse Walker
Emily Walker
Evonne Walker
Robyn Wallen
The Wallingford Family
Michelle Walters
Marie and David Ward
Robin Warnberg



Women's Leadership Council Founding Member Dana Ludwig followed Dr. Lennox Hoyte into the operating room as part of the White Coat Program.



Henry and Roseanne Reyes visit with Koni Cassini and Richard Harrison (left to right) during the Gala Patrons' Party.

Rhonda Warren, RN, MSN, CEN
Gloria Washington
Rebecca Washington
Rose Waters, R.N.
Connie and Ed West
Caryl J. Wheeler
John and Ella Wheeler
James W. White
B.D. Wiggins
Benjamine Wiggs
Cathy L. Wiley, RN, C.P.N.
Brenda Wilkinson
Deniece Williams
Cecilia Williams
Cheryl Williams
Floyd Williams
Diane and Howard Williams
Linda E. Williams

Rebecca J. Williams
Robert E. Williams
Ashley Willis
Bonnie Wilson
Jo Anne Wilson
Lindsey Wilson
Sandra Wimbush
Samantha Winstead
Ramon A. Wong
Andrew Wright
Glenda Wright, R.N.
Gisela A. Yecora
Dr. and Mrs. Bob Yelverton
Stacey Zabel
Heleomar Zanga
Ursula Zaycer
Sharon Zegalia
Jeri-Lynne Zimmerman

J 1, 2009 D 31, 2009.
(813) 844-7250.

Women's Leadership Council 2009 Members

June S. Annis*	Frankie Harrell*	Jessica Raia-Long*
Michele Bailey*	Margo Harrod*	Becky Rauenhorst*
Jennifer Baldwin	Joe Elena Weachter Heinz*	Cindy Richards*
Glenda Barlow	Rosemary Henderson*	Cindy Rosier*
Donna Barrs*	Nadyne Hines*	Mary Kay Ross*
McIver Berner*	Elizabeth Howarth*	Adajean Samson*
Betsy Best*	Mary Lib Howell*	Gwyn Schabacker*
Evelyn Bowles*	Amy Hull*	Kelly Shear*
Tilda Brabson*	Eleni Arnaoutakis Hytoff*	Ann Lindell Sheppard*
Edna V. Broyles*	Dianne Jacob*	Carol Mathews Smith
Velva Clark*	Shelly Jakes*	Missy Steadman*
Mandelyn Cloninger	Jan Karamitsanis*	Catherine Lowry Straz*
Cindy Coney*	Karla Kirkwood*	Keebler Straz*
Cornelia Corbett*	Dana Ludwig*	Patricia Sullivan*
Jamie Curley*	DeeDee Mahaffey*	Susan W. Sykes*
Nancy de Waart*	Jane McIlvaine*	Debbie Thomas
Robin DeLaVergne*	Eleanor McInnis*	Sandy Thomas*
Francine Dobkin*	Julianne McKeel*	Holly B. Tomlin*
Cheryl Eagan*	Danita McKibbon*	Lee Touchton*
Joyce Wellman Fisk*	Marion McLaughlin*	Linda VerPlanck*
Sandra Fleischman*	Patsy McNichols*	Linda Ward*
Lynn Fluharty	Deborah Medina*	Nell Ward*
Sandra O. Gardner*	Anne S. Mullis*	Samantha Warren*
Harrison Giddens*	Pam Muma*	Lucy Weaver*
Natalie Annis Goodwin*	Georgeann Nikolich*	
Andrea Gramling*	Leslie Osterweil*	
Sally Hardee*	Suzanne Kearns Perry*	

*Founding Member

In-Kind Donations of Goods and Services 2009

ABC Fine Wine & Spirits	Joy Lynn Hughes	ScentAir
Lowry and Jennifer Baldwin	Innisbrook Resort & Golf Club	Silk Gardens
Body Construction	Island Flowers	Sloan Sizemore
Bright Monkey Marketing	Island Way Sorbet	Smoke Barbecue & Grill
Buds, Blooms & Beyond	J. H. Williams Oil Company, Inc.	Southwest Airlines
Carrabba's Italian Grill	J.C. Newman Cigar Company	Square One Burgers
Castellano & Pizzo	Brad Johnson, MD and Dana Coberly, MD	Stacey Woods Photography
Catering By Design	Kennedy Spa & Salon	St. Pete Times Forum
Cheesecake Factory	Kimberli Cummings Skin Care	Tampa Bay Lightning and Lightning Foundation
Concepts & Associates, Inc.	Kit's Well-Heeled & Well-Dressed	Tampa Bay Outfitters
Continental Jewelry	Levy Awards	Tampa Bay Performing Arts Center
Creative Sign Designs	Mrs. F. Graham McKeel	Tampa Bay Rays Baseball Ltd.
Datz Delicatessen & Foodie's Market	Melitta USA, Inc.	The Beck Group
Debbie's Chocolate Delight	Morrison Healthcare Food Services	The Bucs Store at Heads & Tails
Dinner Done, Inc.	Northern Trust	The Fresh Market, Inc.
Empire Winery & Distillery	Ocean Prime	The Garden Party
Enchanteria Day Spa	Old Edwards Inn and Spa	The Grand Spa
Fancy Nails	Optics SoHo	The New York Yankees Tampa Foundation, Inc.
Feld Entertainment, Inc.	Outback Steakhouse Inc. Restaurant Partners, LLC	The Pepsi Bottling Group
Robert A. Fiallo	Outback Steakhouse Pro-Am	The Potting Shed
Fleming's Prime Steakhouse & Wine Bar	Pepin Distributing Company	Tiffany & Co.
Devanand Mangar and Florida Gulf-To-Bay Anesthesiology Associates, P.A.	Plantz	Tommy Bahama - Old Hyde Park
Florida Orthopaedic Institute, Inc.	Premier Beverage Company	Terry and Colette Tsavoussis
Grand Hyatt Tampa Bay	Violet Rhoden	Valencia Garden
Grymes Cannon Floral Designs	Salon Lofts	Village Health Market
Frank and Patricia Hancock	Salon Lofts - Loft 19	Vintage Wine Cellars