



**TGH** General  
Hospital

**FOUNDATION**

The view of the Tasha Geeta H... a F v da... v d... e ha... ge e v be efac... f.e d a d... v ee f he... v... We a e v g a efv  
 f he eg.f ha e abe he F v da... v... he c... ca... g a... a d e... ce f T a Ge e a H... a. l. l... h ugh he e a e h... ha... e ca... a... e  
 a a... g... ac... he hea h ca e f e... e... v c... v... .

# 2004-2005 Board of Trustees

## Executive Committee

- Mark A. Nouss, Esq. - Chairman
- J. Bryan Guyton - Vice Chairman
- Albert J. Silva - Secretary
- John T. Touchton, Jr. – Treasurer
- Larry C. Carey, M.D. – Member At Large
- Phillip S. Dingle – Member At Large

## Board of Trustees

- |                       |                           |                                       |
|-----------------------|---------------------------|---------------------------------------|
| Ron K. Bailey         | Richard L. Kouwe          | Steve L. Short                        |
| Mclver S. Berner      | Steven R. Matzkin, D.D.S. | John T. Sinnott, M.D.                 |
| Philip R. Carroll     | Carter B. McCain, Esq.    | Catherine Lowry Straz                 |
| Richard A. Corbett    | Cleveland A. McInnis      | Patricia C. Sullivan                  |
| C. Samuel Ellison     | John B. McKibbon, III     | Joseph W. Taggart                     |
| Toni A. Hoover        | Eugene H. McNichols       | Stella Ferguson Thayer, Esq.          |
| Ronald A. Hytoff      | Pamela S. Muma            | Sandra K. Thomas                      |
| Richard C. Karl, M.D. | Barbara B. Romano         | Julie C. Wooley                       |
| Gary D. Koch          | Arthur R. Savage          | Charles E. Wright, M.D.               |
|                       |                           | Robin DeLaVergne - Executive Director |

Pictured on the cover (left to right and top to bottom):

Jim Warren, Bryan Guyton, Jeff Wooley, Al Silva and Vin Hoover prepare to tee off. Eleni and Ron Hytoff enjoy the circus with Mclver Berner and Samantha Warren. Dr. Bruce Zwiebel serves as preceptor to White Coat intern Roy McCraw. Sandy MacKinnon, Trustee Emeritus Maude Pallardy, TGH Board Member Dottie Berger- MacKinnon and Steve Fluharty at the Annual Dinner. Circus Big Top Sponsors Erika and Don Wallace with children Alexa and Donnie.

Dear Fred,

The year 2005 is a special year for the Tata Group. It is a year of celebration and achievement. It is a year of growth and progress. It is a year of success and accomplishment. It is a year of pride and honor. It is a year of glory and triumph. It is a year of joy and happiness. It is a year of love and compassion. It is a year of peace and harmony. It is a year of hope and optimism. It is a year of faith and belief. It is a year of courage and determination. It is a year of strength and resilience. It is a year of wisdom and knowledge. It is a year of learning and growth. It is a year of discovery and innovation. It is a year of achievement and success. It is a year of excellence and quality. It is a year of integrity and honesty. It is a year of respect and dignity. It is a year of kindness and generosity. It is a year of compassion and empathy. It is a year of love and care. It is a year of peace and harmony. It is a year of hope and optimism. It is a year of faith and belief. It is a year of courage and determination. It is a year of strength and resilience. It is a year of wisdom and knowledge. It is a year of learning and growth. It is a year of discovery and innovation. It is a year of achievement and success. It is a year of excellence and quality. It is a year of integrity and honesty. It is a year of respect and dignity. It is a year of kindness and generosity. It is a year of compassion and empathy. It is a year of love and care.

## SIGNATURE EVENTS A GREAT WAY TO GET INVOLVED

Our signature events are a wonderful way to raise funds for the hospital. The continuing community outreach and relationship building that result from these events are as important as the funds raised. Each event adds new friends and supporters and increases awareness of Tampa General Hospital's programs and services.

The TGH Fundraising events provide the opportunity for each of us to benefit the hospital and the community.

### 14th Annual Neighborhood Crawl

Federated Realty, Brevin & Associates, Inc. and the Neighborhood Crawl Association presented the 14th Annual Neighborhood Crawl on Saturday, June 6, 2005. The event raised \$138,000 for the Pediatric Emergency Care Center at TGH. The Donor Wall of Fame Fundraising event was held at the BGT Sports Center.

The event, held at the Brevin & Associates, Inc. Sports Center, was a great success. The Neighborhood Crawl Association is a great organization that provides a great way for the community to get involved in fundraising for TGH.

### The 2005 Moments in Time Gala

Over 800 guests attended the 2005 Moments in Time Gala at the Ybor City Convention Center on Monday, May 20, 2005. The event was a huge success and raised \$120,000 for the hospital.

The event was held at the Ybor City Convention Center and was a great success. The event raised \$120,000 for the hospital.

2005 Gala Chair Mclver Berner and her husband Al Silva, with auctioneer Gary Koch, raised \$170,000 for the hospital.

### SAVE THE DATE: The 7th Annual Golf Tournament

### 7th Annual Golf Tournament

The 7th Annual Golf Tournament was held on October 24, 2005 at the Old Meeting House Golf Club. The event raised \$120,000 for the hospital.

The event was held at the Old Meeting House Golf Club and was a great success. The event raised \$120,000 for the hospital.

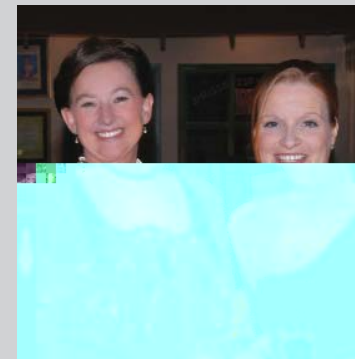
Additional information for the event can be found at MORE HEALTH, Inc., Tampa General Hospital's health education and wellness department.

The event was held at the Old Meeting House Golf Club and was a great success. The event raised \$120,000 for the hospital.

### SAVE THE DATE: The 8th Annual Golf Tournament



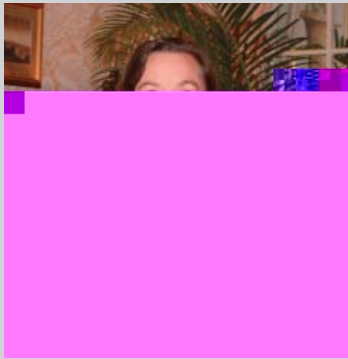
Circus Chair Toni Hoover and her husband Vin at the 2005 Night at the Circus.



Gala Chair Mclver Berner and Debra Roberts at the Moments in Time Gala.



left to right - 2005 Golf Tournament Co-Chairs Joe Taggart and Al Silva with auctioneer extraordinaire Gary Koch.



James M. "Red" McEwen Award winner Mclver Berner at the Annual Dinner.



Auxiliary President Cathy Phillips (right) presented the Madeleine P. Gibbons Humanitarian Award to Heidi Myers at the Annual Dinner.



During the summer White Coat Program, USF Provost Dr. Renu Khator shadowed Dr. Harry vanLoveren.

## OTHER ANNUAL EVENTS INCLUDE:

### 2005 A va D e

The F v da . ce eb a ed a he v cce fu ea a v  
 A va D e he d Oc be 6, 2005 a Pa a Ce a G fa d  
 C v C vb. Ca T v f a ca ad . e ed a he D e  
 S . Ta a Ba Bucca ee She Qua e, h e ed a  
 he h a cha f he c v . ha e f he Bv d g  
 E ce e ce Ca ag , a he e e ea e. He . ed  
 h e . a e da ce . def a ca v bu  
 a . de he h . ca v .

Mcl e Be e a e e ed h The Ja e M . Red  
 McE e A ad. Th / a ad, a ed / a fe a TGH F v da .  
 f v de , . e e ed each ea a e e h e  
 eff , g d , a d e ce ha ec . bu ed . g . f . ca  
 he be e e / f Ta a Ge e a H . a. Mcl e ' v  
 f he h . a bega . 2000 he he a ed v ee . g  
 he c cv c . ee. S ce he he ha ed he g f  
 c . ee, cha ed he ga a, a d e e / he F v da .  
 B ad f T v ee . . Whe he a . v ab v Ta a  
 Ge e a , ' ea ee ha he d e . f he hea , a d  
 F v da . Cha a Ma N v .

He d Me a he ec . e f h . ea ' Made e e P.  
 Gbb Hv a / a . a A ad f e b d . g he . . . ,  
 e hv . a , a d c . e / f M . G . bb , a cha e  
 e be f he TGH Av . a . He d . ed he Av . a . 1993  
 a d cv e v ee a he a . bb . f a . de  
 h . ea e . ga he av . a ea ve .

SAVE THE DATE: Thu da , Oc be 12, 2006,  
 2006 A va D e a Pa a Ce a G f  
 a d C v C vb

### Wh e C a M . -l e h . P g a

TGH' Wh e C a M . -l e h . P g a a  
 c v . a d bu . e eade e e e ce a a /  
 each . g h . a f . a . . de ' . f . e . Each  
 . e . a . ed . h a Ta a Ge e a h . ca / a  
 e . e da . N h . g / ea a ged , vga ca ed. The  
 . e acc a e he h . ca e e he e v d ,  
 . a e c v a . , a d e e . he / ea . g . Ov  
 ga . g e he . e a ea da - - he - fe fa h . ca  
 he . e . , he d a a ad he c . e . l . a  
 v . de a e he e e . e f v h . ca a d  
 aff, a da he hv a . .

The Wh e C a P g a a he d he e . 2005 h  
 a ec d f . . e c / e . g he ga . O e hv d ed  
 . e - e e . e ha ec e ed he ga . ce .  
 . ce . a he h . a . he . g f 2000. The a ve f  
 h . ga ca be de a ed b h . v e f a  
 a . c . a . he fa ga . : A a f e a e e e  
 ea ag , l c . de ed he h . a be ' g d ' bu . ' g ea .  
 l . c . de TGH be a e a a be a d v a d g h . a .  
 l . v d c . de TGH f e fa d ed e dve he  
 a / e / a cv . g - edge ech . g .

# 2005 Special People

## James W. Warren, III

James W. Warren, III, is a graduate of the University of Virginia and is currently a partner in the law firm of James W. Warren, III, P.C. in Charlottesville, Virginia.

Mr. Warren has been a member of the Board of Trustees since 1993 and has served as Chairman since 1999 through 2002. He is also the Chairman of the Foundation for the University of Virginia.

When he was a young boy, he was a member of the Boy Scouts of America and served as a Scoutmaster for many years. He is also a member of the University of Virginia Athletic Association and the University of Virginia Alumni Association.

In addition to his professional and volunteer activities, Mr. Warren is an avid golfer and enjoys spending time with his family.

Mr. Warren is also a member of the Board of Directors of the University of Virginia Foundation and has served as Chairman of the Board of Directors of the University of Virginia Foundation since 2002.

Mr. Warren is also a member of the Board of Directors of the University of Virginia Foundation and has served as Chairman of the Board of Directors of the University of Virginia Foundation since 2002.

## Stella Ferguson Thayer

Stella Ferguson Thayer is a graduate of the University of Virginia and is currently a partner in the law firm of James W. Warren, III, P.C. in Charlottesville, Virginia.

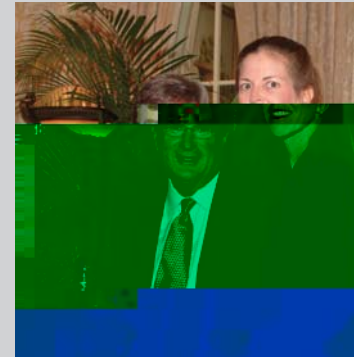
Ms. Thayer has been a member of the Board of Trustees since 1985 and has served as Co-Chair of the Building on Excellence Campaign since 2002.

Ms. Thayer is also a member of the Board of Directors of the University of Virginia Foundation and has served as Chairman of the Board of Directors of the University of Virginia Foundation since 2002.

Ms. Thayer is also a member of the Board of Directors of the University of Virginia Foundation and has served as Chairman of the Board of Directors of the University of Virginia Foundation since 2002.

Ms. Thayer is also a member of the Board of Directors of the University of Virginia Foundation and has served as Chairman of the Board of Directors of the University of Virginia Foundation since 2002.

Ms. Thayer is also a member of the Board of Directors of the University of Virginia Foundation and has served as Chairman of the Board of Directors of the University of Virginia Foundation since 2002.



New trustee emeritus and Building on Excellence Campaign Co-Chair Jim Warren and his wife Samantha enjoying the Annual Dinner.



Stella Ferguson Thayer, Co-Chair Building on Excellence Capital Campaign.



Foundation Chairman Mark Nouss and Executive Director Robin DeLaVergne present flowers to nursing scholarship graduate Lynsey Lasotta Kocet and her mentor, Tania Pike.



Expansion project: Walkways on the fifth and sixth floors and on the roof extend over the building's open courtyard. Located on the fourth floor, the courtyard will provide a quiet place of reflection for patients and visitors.



Building on Excellence Co-Chairs Stella Ferguson Thayer and Jim Warren

### Nursing Scholarships

The TGH Foundation received the 2005 Nursing Scholarship Award.

The award recipients, Heather Vanecko and Christina Dade, each received \$10,000. The Foundation will give each student 16 hours of tuition and 40 hours of fees. Co-chairs Stella Ferguson Thayer and John H. Sykes presented the award to the students. The Foundation has awarded \$185,000 in Nursing Scholarship grants.

In 2005, the foundation awarded the Katherine S. Geary and Lela Kocet. The Foundation recognizes the accomplishments of the students, Sarah Thayer and Tania Pike.

### Building on Excellence Campaign

The campaign has received a number of gifts from the Foundation. Board Chair Stella Ferguson Thayer and James W. Warren, III, the Building on Excellence Campaign raised \$100,000. Gifts include \$10,000 from the Stella Ferguson Thayer Foundation, the John H. Sykes Foundation and the Don & Erika Wallace Family Foundation - each contributed \$10,000.

Though the campaign is still in progress, the campaign has received the dedication of the new building. The Building on Excellence Campaign, the campaign received the dedication of the new building. The campaign has received the dedication of the new building. The campaign has received the dedication of the new building.

The campaign has received the dedication of the new building. The campaign has received the dedication of the new building. The campaign has received the dedication of the new building.

# Honorariums and Memorial Gifts for 2005



left to right - David Straz, Jim Kennedy, TGH Board Chair Hal Mullis and Dr. Alex Rosemurgy enjoy the Annual Golf Tournament.

## Honorariums

*I H f M. B A a e*  
M. R be J. R ce

*I H f he P a e f D. N a c C.*  
*B v e e a d D. J e h H. B v e e*  
D. J e h a d N a c B v e e

*I H f J a c C d a*  
M. S a c M e

*I H f M. S e e D v b*  
M. J a e G d b e g M c E e

*I H f M. G e d a E a*  
W. a P a d v , C M A

*I H f M. J e h e G a e*  
M. F. d e a G v e e

*I H f K e e h A. G v e , M. D.*  
*a d A c a e*  
M. a d M. J a W. H a

*I H f D a d E. H a e , M. D.*  
M. a d M. J a W. H a

*I H f M. a d M. R H f f*  
T e e a d J e C a

*I H f F a d A. M a a , M. D.*  
M. a d M. J a W. H a

*I H f M. E d a d J. M c C a , J.*  
M c C a & B a d F g S e . c e , l c .

*I H f M a N v , E .*  
M. a d M. R b e P. E a

*I H f R a f a e S a a , M. D.*  
J u d g e a d M. M. B v c

*I H f C e d . c D. S h e f f e d , M. D.*  
M. a d M. J a W. H a

## Memorials

*I M e f M. P a v D. A d a*  
M. D a d K e e  
M. a d M. L h a K e e

*I M e f M. M c h e e A e a d e*  
M. N a J. J e e  
M. a d M. R. W. J e e  
M. J a L a v d e  
M. a d M. B b N h e c d  
M. M a . B. S a  
M. D e I. S e

*I M e f M. C a e c e H. B a e*  
M. S a b a A. C a

*I M e f M. L a e c e B e e*  
N a c & H a d e W a a

*I M e f M. M a E. B a*  
B a c b d T e c h g e , l c .

*I M e f M. P a . c a B v c e*  
J. E. W e a c h e , l c .

*I M e f D. D a d W. C a h*  
D. a d M. D a d A. S . h

*I M e f M. J v e C a b e*  
A a a S . . L L C  
N a h . e P e d a  
M. T a . e G . f f .

*M. a d M. R b e E. V. K e e , J.*  
N a . a H c e L e a g u e F v d a .

*I M e f M. A g e a C a c*  
M. M c h a e F . c h e a d F a .  
K d e d H e a h c a e O e a . g , l c .  
D. a d M. S e h e K. K a  
R a d g A c a e f T a a

*I M e f M. M a C a d*  
M. G a c e K g

*I M e f M. E d d C c h a d*  
M. M a g a e C c h a d

*I M e f D. J. E. D e a*  
M. M a a R c A g v e  
M. a d M. F e d e . c W. B a v  
M. a d M. K e e h G . d e a d F a .  
M. a d M. J e e J h  
M. a d M. S. R a d h J h , I I I  
M. C d M a a d F a .  
M. a d M. D a d H. M g e  
M. a d M. J a e P. O. B . a  
M. a d M. R b e L. R e  
M. B e d a J. S v d  
M. a d M. M c h a e W. T h v  
M. a d M. W. a F. W h e , J .  
M. a d M. G. W. W h

*I M e f M. D . M. D v*  
M. a d M. M c h a e B e e  
M. Y e T. P . e

*I M e f J a e , D h e a*  
*a d M c h a e F*  
M. E e M. C a  
M. P a . c a A. C b e  
M. J a e H. D a .  
M. M a j . e E c b  
J h a d M a v e e O g d e  
T G H M e d . c a / S v g c a S e . c e  
M. C h e W e e

*I M e f M. M a C a h e . e G b b*  
M. a d M. R c h a d G b b

*I M e f M. D G v*  
I e C e a . , l c .  
M e a g e , l c .  
R . e C . D a l e .  
M. a d M. A a L. W a c e

*I M e f M. M e . " B e " G d*  
M. D a d Z. L g a  
S v h e T e C a  
M. a d M. A h v P. W a

*I M e f M. D a e E. G e e a d e*  
M. a d M. E d B a e  
B a h e G a d e N e g h b h d  
A c a .  
C h a e d e C . f f e v , l c .  
M. S c O. C h a a  
C h . c P a & R e h a b . a . S v G v  
M. E d C . a d F a .  
M. G . a D . a d F a .  
M. a d M. R g e D. F  
M. a d M. G e G d  
M. D v g a G a e a d F a .  
M. H v g h J e e a d F a .  
M. a d M. P e O. K e e e  
M. E d a d L . c  
M. a d M. R a d P. L v e  
M. a d M. C. A. M a . e  
M. a d M. C h a e S a v d e  
M. a d M. M a S c a g . e  
M. a d M. N e T a  
M. a d M. W a e W a  
M. H e S. W . a  
M. a d M. J e W .  
M. E v . c e M. W f e

*I M e f D. L a v e c e G v d*  
M. Y. M. A a . e e  
D . c a d J u d B a c a  
M. a d M. F e c h e C a e



# Honorariums and Memorial Gifts for 2005

D. a d M . Ga h R. De  
 D. a d M . A. J h E.  
 M. a d M . Ja e L. Fe a , J.  
 D. a d M . Cha e H. F. he  
 M. Nad e G. ff  
 M. Jea C. G. ff h  
 M. a d M . Be ad G v d  
 M. T cha Ha c c  
 J. C. a d Ha e He  
 M. Ca e a H d  
 M. Be e Hve  
 M. C ha L. J h  
 M. a d M . G be L. J h  
 M. Be da L e  
 M. Le e A. Me c  
 M. a d M . Ge C. Pea  
 M. Fa ce E. P ad  
 D. a d M . J h N. Ra e  
 Rehab. a. & Eec dag c, PA.  
 M. a d M . Fede. c. M. R he be g  
 D. a d M . Ra h E. R de  
 M. a d M . Evge e R. Schv a  
 M. Lee S a  
 D. a d M . D ad A. S . h  
 USF De a e f Rad g  
 R. R. V. ja , M.D.  
 M. a d M . C . W

*I Me f M. Ea Ha e*  
 A e. ca A ca. f Nu e A e -  
 Ta a Ba Cha e  
 M. L v. e Bea -Kv h  
 M. a d M . Af A. Da  
 Ge de & A a e  
 M. a d M . B ad e J. Ge e  
 M. a d M . M. chae F. H. c e  
 M. W a A. Ke g  
 M. R cha d B. Ma  
 Ge ge C. Pe a , P.A.

*I Me f L v W h He , M.D.*  
 D. a d M . R. A. Bagb  
 M. a d M . G. R be Ba cha d  
 Be a d C ., C.P.A., P.A.  
 M. Sa de C. Bu  
 M. a d M . Ed ad Ca a v.  
 M. Ka e Ca e  
 M. Sa a B. C ffe  
 M. a d M . Ge ge D. Cv . , J.  
 M. a d M . J. B. De ach  
 M. Ma Lee Nu a Fa .  
 M. a d M . Ja e L. Fe a , J.  
 M. a d M . Je E. F ga  
 M. R e a H. He de  
 M. a d M . Th a N. He de , III  
 M. D a Ca He e e  
 M. a d M . Ja e C. H e  
 M. Jac. M. Hvghe a d Fa .  
 D. a d M . Se he M. K.  
 The La Offce f J h M. F. gbb  
 M. a d M . Th a J. Mah e a d Fa .  
 M. Da a M. Ma .  
 M. a d M . F. G aha McKee  
 M. Sve W. McNe .  
 M. a d M . A hb M d  
 M. A be M he , J.  
 M. Sve G. Pe e e  
 M. G d G. P. che  
 D. Ma ha P. ce a d M. Th a McKe , J.  
 M. Ge ad Rave h  
 M. a d M . Ma H. Rave h  
 M. a d M . W a H. Re d  
 M. Ne S. R ebec  
 M. a d M . R be D. Se a  
 M. D h T. Se e  
 M. Pegg Sv e  
 M. a d M . Pe e J. T. Ta  
 M. a d M . Da d E. Wa d , J.  
 M. J. Ma e W a  
 D. a d M . J. A. W

W. gh \_ G v e H v e  
 M. Geg C. Yade  
 M. a d M . J. M. Yade  
  
*I Me f M. Ka e M. He*  
 J. C. a d Ha e He  
  
*I Me f M. J. B b H v h e*  
 The Ja e W. Wa e , III Fa .  
  
*I Me f M. R be Jaeb*  
 The Ja e W. Wa e , III Fa .  
  
*I Me f M. A Wa e J e*  
 Ted a d R b DeLaVe ge  
 The N b. Fa .  
  
*I Me f M. Ab a L. Jv c*  
 M. Sa da C v be  
 M. Ab a a He  
 M. Ca La g .  
 M. O . a J. M e  
 Dea a Ne a d T b Ha  
 M. Da O B e  
 M. Ma ca R a c  
 M. E e e Sha  
 M. N a L. Sv a e  
 TGH Adv Da  
 TGH Ta a Saff f 8A  
 USAA  
 M. Cec a W a  
  
*I Me f Fe. L C ce , M.D.*  
 M. D a O S ee  
 Rad g A ca e f Ta a  
  
*I Me f M. R be McHe*  
 M. Pa ca S. B d  
 M. a d M . Da d C B e e  
 M. a d M . W a A. Bu  
 M. Sha J. C .  
 M. a d M . V ce A. C e  
 M. a d M . Ae a de M. C e , J.



left to right - Nancy Crane with Dr. Larry and Chris Carey at the Pre-Gala Patrons' Party.

M. Ba ba a A. Da . a d Fa .  
 M. L. T. Da .  
 M. a d M . J h Duff  
 M. a d M . J h J. G. ede  
 M. a d M . Pa c. S. Ha e  
 D. a d M . M. chae T. Jae e  
 M. a d M . R cha d D. Legga  
 M. Sv a e M. L  
 M. Ma ha McA  
 M. a d M . D ad Mcl e  
 M. a d M . R be D. M e  
 M. a d M . Ge ge M. M e  
 M. a d M . R cha d T. O D e  
 M. M. L. Ogde  
 M. a d M . Wa O e  
 M. a d M . Ma Pavf  
 M. a d M . Cha e S . h  
 M. a d M . R be D. Se e ee  
 M. Ge ge T. We v h  
 M. a d M . R cha d E. W

*I Me f M. Ca a Se a M ff*  
 M. a d M . W a S. G aha , J.

*I Me f M. A . M a*  
 Rad g A ca e f Ta a

*I Me f M. A Mv he*  
 The Ja e W. Wa e , III Fa .

# Honorariums and Memorial Gifts for 2005



Foundation Chair Mark Nouss and wife Debbie celebrate at the Gala.

*I Me f M. Kahlee Muvh*  
 M. Sva A ch  
 D. W. a A bech  
 M. J-A Ae a d . .  
 M. De eda A e  
 M. a d M . R ad C. A .  
 M. Ph . Aga Ba d .  
 M. Rcha d Beage a d M . E e a Me . a  
 M. Da e B. Be e  
 M. Rache Bv c  
 M. a d M . Wa e Bv gg af  
 M. Sa ah Ca he . e Bv  
 M. Jac ve . e Ca a .  
 M. a d M . Ge a d J. Ce v .  
 M. a d M . Ke eh Ch . e e  
 M. a d M . Ja Ca  
 M. C ee Ce e a d  
 M. a d M . Ba e Da e  
 D. K a . Da . . d  
 M. a d M . R ad Dec .  
 M. a d M . He D e ech  
 Dv ga F . U . ed Me h d Chv ch  
 M. Ma F . ea -Wa he a d M. J. Shea  
 M. Ka e Fa  
 M. a d M . Be a d Feed a  
 Feed Hgh Sch  
 M. Rcha d Ga ca  
 M. a d M . W. a Ga ga

M. a d M . Jh Ga .  
 M. Sa ah G d a ve  
 M. Ph . Gv d  
 M. La e ce Ha  
 M. R be' G. Ha . g  
 M. a d M . Cha e He de  
 M. Ja e A. He de  
 M. W. a He . e  
 M. E. abe h He a de  
 D. A de H ff  
 M. a d M . C. ff d H e  
 M. Ka h M. He  
 M. a d M . W. a Ka da h  
 D. Ra gacha Ka v .  
 D. S. . a Ka .  
 M. a d M . D K. Kea  
 M. a d M . Jh Ke , J.  
 M. a d M . C. ff d K v .  
 M. Ma . a e Ka e  
 M. Mgve Lab ad  
 M. Ma M. La d  
 M. S Lee  
 D. a d M . Da . e L  
 M. a d M . Da . d Ma a  
 M. Jv e Ma e  
 M. A . M. a d M . L d a Ka a .  
 M. a d M . Ge e M.  
 M. a d M . Pav Mv e . , II  
 M. a d M . Da . d O .  
 M. a d M . Rafae Pe e  
 M. Rcha d P he v  
 D. a d M . Naga aja Ra ga a ha  
 M. E . c Ra v e  
 Re v . Ne . a e  
 M. a d M . A hv Sa de  
 D. Svdee Sa a  
 D. V. da Sca e  
 M. a d M . Red G. S  
 M. Rcha d S a  
 D. Ma l . e Sv b c

M. A . ca Sa e -Haa e  
 M. a d M . H ad S . h  
 M. R a G. S / de  
 M. Jh J. S v e  
 M. a d M . J e h S ee , S.  
 M. a d M . Ja e Taf /  
 M. a d M . Ja e Ta  
 M. She a Tejada  
 M. Ka Thv be  
 M. Ra h T de  
 M. a d M . Da e Tv e  
 D. R . Tv e  
 USF Facv S aff Cv b  
 M. K Vaa a . a d  
 M. Ae . Ma a ga .  
 M. a d M . Rcha d V  
 M. a d M . Rcha d V e  
 M. J g X a  
 D. J e Za a -Ca

*I Me f M. R be N t*  
 The Ja e W. Wa e , III Fa .

*I Me f M. Fe a d F. O a . a*  
 M. D . J. Ke a d Fa .  
 Va e ca Ga de

*I Me f M. Rcha d R. Pa e*  
 M. Jvd . h A. Bace  
 M. Pegge L. Be  
 M. Sve A Cha  
 M. Rv h S. C he  
 M. a d M . Th a W. Da b  
 M. Jea De e  
 M. a d M . Pav L. Dv ga  
 M. E e Sa de Ga  
 M. Ma ga e Gaha  
 M. Ma ga e Jh  
 M. Ka . M. Pa e  
 M. a d M . The d e Pa e  
 M. Me e Pa

D. L da K. Pe e  
 M. a d M . K. M. Rad . c e  
 M. a d M . C. Je Ravch  
 M. Ge vde R e b v  
 M. Cavde e S ad . g  
 M. Ca e J. Ve eca  
 M. a d M . W. a K. Wach b  
 M. E he We be ge

*I Me f D. Fede . c. A. Redd*  
 M. a d M . Ja e L. Fe a , J.

*I Me f M . Cha e P. Reed*  
 The Ja e W. Wa e , III Fa .

*I Me f M . Dee R. cha d*  
 M. Sab a A. Ca

*I Me f M . Jac ve . e N. Rvd .*  
 U . e . fl . . W e ' Rv gb Tea

*I Me f M . Sv a e Sa a e e*  
 Ted a d R b DeLaVe g e

*I Me f M . He e e S a e*  
 The Ja e W. Wa e , III Fa .

*I Me f M . W. a E. Sv e*  
 M. Ja e He a d Fa .

*I Me f M . Ed T c e*  
 H b vgh Cv H . a Av h .

*I Me f M . Fed W . a*  
 C U gca , I c.

*I Me f M . C. ff W*  
 M . M . a C. Ph .

# Golden Tree of Life for 2005

## Honorariums

*In Honor of Drs. Lewis and Enid Barness Ruffolo, Hooper & Associates, M.D., P.A.*

*In Honor of TGH Information Systems Ms. Ginger K. Oliver*

## Memorials

*In Memory of Mrs. Judy Greenwald TGH Senior Management Team*

*In Memory of Mrs. Sara Hytoff Florida Gulf-To-Bay Anesthesiology Associates*

*In Memory of Daniel "Bo" Smith, M.D. Florida Gulf-To-Bay Anesthesiology Associates*

# Building on Excellence Campaign - Community Donors

( c r d e b h e d g e a d g f . c e . c e . f h e c a a g )

A. R. Sa age & S , l c.  
 M . a d M . La e ce Ade a  
 M . A . da A da d  
 T dd a d C . d A e  
 A a . e O . C a  
 A S v h  
 M . A h B . A d ea  
 A d ea F v da .  
 The Ba e Fa . F v da .  
 M . a d M . Ba Ba e  
 Ba f A e . ca  
 \*The Ba f Ta a  
 D . Le . a d E . d Ba e  
 Ve e a d I . Ba a , M.D.  
 Ba A ea Ca d g A c a e , P.A.  
 Bea d F v da . , l c.  
 The Bec G v  
 M . Mcl e Be e  
 M . a d M . F . Sc B a c b v  
 M . a d M . Le e M . Ba  
 D . a d M . Vc D . B e  
 D . J e h a d Na c B v e e  
 M . a d M . Ed a d A . B v  
 D . Ca he . e L ch B v c h a d  
 M . B b B v c h  
 Sa d a a d R be B v c e  
 D . De a d Ma ga . a Ca c  
 M . J e Ca . a  
 D . a d M . La C . Ca e  
 M . Ph . R . Ca  
 CBS

Te e a d J e Ca  
 M . R da S . C . c . Ga e  
 M . Na c C be  
 Ja e a d Le R C . , J.  
 M . R be R . C a a  
 R cha d a d C e . a C be a d  
 The W . a Sa Fa . h F v d  
 D . Wa e a d Ba ba a C v e  
 M . Da . e C v .  
 M . a d M . Pav W . Da ah , J.  
 Da e - Ba ha F v da .  
 The Da . d A . a d Ma l e e Fa  
 Me . a F v d  
 Da . d A . S a , J . F v da .  
 M . Ma ga e E . Da .  
 M . Ta . Da  
 M . Rega l . Dee . g  
 DeLaVe g e & C a  
 M . a d M . Je D . ge  
 K a d Ph . D . ge  
 R be V . D . g v e , M.D.  
 D a d E . a Wa ace Fa . F v da .  
 D h Th a F v da . , l c.  
 E . W . Sc . C .  
 M . a d M . R be S . Ed a d  
 M . a d M . R be P . E a  
 M . a d M . J . Re Fa . , III , E .  
 Fe a M Ca C a , l c.  
 Fa ca Pa . g A ca . f  
 Ta a Ba  
 Le . F . , M.D.  
 \*M . a d M . Ed a d L . F



Ted DeLaVergne and Foundation Executive Director Robin DeLaVergne at the Gala.

F . da Ca d a cv a l . v e , P.A.  
 F . da Gv f - T - Ba A e he . g  
 A c a e  
 F . da O h aed . cl . v e  
 M . J h H . F ga  
 M . a d M . D . c . Gebba  
 Fa . f T a d A G a e  
 The Ja e L . Gee a d F v da .  
 Ge ha , S . h & Pa e  
 The Gv Fa .  
 M . Ja e C . Ha - W  
 Ha d . C v c . C a , LLC  
 M . Sha He e  
 M . J h He g  
 Le . a d Sa H . , III  
 H b v gh C v H . a Av h .  
 M . a d M . Se he H d  
 Sa H . H v , M.D.  
 Hughe F v da . , l c.  
 I . B . E . W . L ca U . N . 108  
 l a d H e  
 M . L e a Jaeb

C e a d M.che e Jeff. e  
M. a d M. .Ja e A. J. e e  
J h H. S. e F v da. , I c.  
The J h S. F v d f l e a. a S v d  
f l f e c. v D. e a e  
B a d J h , M.D.  
M. a d M. .T J h  
D. a d M. .R. cha d C. Ka  
M. B. g Kea e  
M. R be K. ge  
Ga a d D. a K ch  
M. a d M. .S e ce H. K ch  
R. c. a d Jea e K v e  
The Ke ge F v da.  
Ja a d S v e K v h  
M. D. a La e ce  
D. J h Le e a d Fa .  
M. .Cha e J. L ga  
M. a d M. .A h W. L e  
M & D Ca e, I c.  
M a b e a d E h S Cha. a b e  
F v da. , I c.  
M. la MacKech e

A.D. "Sa d " & D e Be ge -MacK  
The Ma . Fa . F v da.  
M. a d M. .Le e M. McC v g  
Ja e a d J h McE e  
M. .Pegg M. McE .  
Eea & B v c. Mcl .  
McKbb F v da.  
Ge e a d Pa McN ch a d Fa .  
MedQu.  
M. M.chae R. Me e de  
M. M.chae Me ac  
M. a d M. .A . M e  
C ha D. M e, CPA  
M. Ma M e  
I a a d L e a M  
M. a d M. .Ke M che  
M. Th a D. M e  
M. La C. M ga  
M. a d M. .Ha d W. M v . , J.  
Pa a d Le M v a  
Sa d a L. M v a  
M. Pe e E. M v a  
The Ne Y Ya ee Ta a F v da. , I c.  
Ma a d Debb e N v  
Ov bac. S ea h v e, I c.  
D. a d M. .E a Pac e  
M. Ge a d Pa e. , J.  
Pa e a a d Le e M v a Fa . F v da.  
Ja O. Pa ada, M.D.  
B v d a d Ma E he Pa e  
Ja e R. Pa e , M.D.

M. a d M. .J h R. P e  
\*Rad g A ca e f Ta a  
M. J v d. h A Red a  
Rehab. a. & E ec d ag .c , P.A.  
M. a d M. .Da e K. Re ha  
M. a d M. .Be a d G. R. gb  
M. .Ba ba a R a  
R a d M c D a d H v e  
Cha. e f Ta a Ba  
M. a d M. .Jee P. R  
M. a d M. .J e R v e e  
R v f f , H e & A ca e , M.D., P.A.  
M. a d M. .L. GM e Ne Sav. 5. M. a d M. .Le a McSae b e  
M La g Ke C M c Sa. e P.A.  
M. a d M. .J ee R. S M c S P. d

# Donations to the Foundation for 2005

( c u d e b h e d g e a e a d g f )

## Gifts of \$100,000 and Above

Richard & Catherine  
The William S. F. H. F. V. d.  
M. T. a. . Da.  
D. & E. a. Wa. ace Fa. . F. v. da.  
Fe. a. M. Ca. C. a. , l. c.  
J. h. H. S. e. F. v. da. , l. c.  
The Ke. ge. F. v. da.  
Pa. a. d. Le. e. M. v. a.  
TGH Med. ca. S. aff.  
\*Se. a. Fe. gv. Tha. e. , E. .

## Gifts from \$50,000 - \$99,999

The Ba. e. Fa. . F. v. da.  
\*M. L. Ba. d. /h S. Cha. abe  
Ma. be. a. d. E. /h S. Cha. abe  
F. v. da. , l. c.  
\*Rad. g. A. ca. e. f. Ta. a.  
R. a. d. Mc. D. a. d. H. v. e. Cha. . e. f.  
Ta. a. Ba.  
M. Pa. . ca. C. S. v. a.  
Tea. Hea. h. Ph. . ca.  
TGH Av. . a. , l. c.  
\*M. B. b. Th. a.  
W. a. A. G. eg. J. F. v. da.

## Gifts from \$25,000 - \$49,999

Ba. f. A. e. ca.  
\*Bv. cha. a. l. ge.  
D. h. Th. a. F. v. da. , l. c.  
F. da. Gv. f. T. -Ba. A. e. he. . g. A. ca. e.  
The J. h. S. F. v. df. l. e. a. a. S. v. d.  
fl. fec. v. D. ea. e.  
A. D. "Sa. d" a. d. D. . e. Be. ge. -MacK.  
The Ma. . Fa. . F. v. da.  
McK. bb. F. v. da.  
Ge. e. a. d. Pa. McN. ch. a. d. Fa. .  
Rv. ff. , H. e. & A. ca. e. , M. D. , P. A.

## Gifts from \$20,000 - \$24,999

M. a. d. M. J. Re. Fa. . , III, E. .  
F. da. O. h. a. ed. c. l. . v. e.  
I. B. E. W. L. ca. U. . N. 108  
Ja. a. d. S. v. e. Kv. h.  
E. ea. a. d. Bv. c. Mcl. .  
Sv. T. v. Ba. .

## Gifts from \$15,000 - \$19,999

M. a. d. M. G. R. be. Ba. cha. d.  
Da. d. A. S. a. , J. F. v. da.  
l. a. d. H. e.  
KPMG LLP  
M. . Hea. h. ca. e.  
S. a. a. USA. Bv. d. g. l. c.  
TECO E. e. g. , l. c.

## Gifts from \$10,000 - \$14,999

\*The Ba. f. Ta. a.  
M. Be. h. Ba. ha.  
Se. he. G. Ba. e. , M. D.  
M. Cha. e. A. Ca. d. e.  
D. . De. a. d. Ma. ga. a. Ca. c.  
Ca. T. v. F. a. ca. Ad.  
M. Ph. . R. Ca.  
\*M. a. d. M. R. cha. d. S. Ca. e. , S.  
\*M. a. d. M. Cha. e. M. Da. . , J.  
Fe. d. E. e. a. e. , l. c.  
Fe. gv. F. v. da. , l. c.  
Ge. ha. , S. h. & Pa. e.  
The Gv. Fa. .  
Ha. d. P. e. e.  
l. e. d. P. e. ba. , l. c.  
McCv. be. , l. ca. , Da. e. , Va. de. ,  
Bv. . , Fe. e. a. , P. A.  
M. . Ba. ba. a. R. a.  
G. R. cha. d. "R. c. " a. d. Sa. d. Th. a.

## Gifts from \$5,000 - \$9,999

A. a. e. O. C. a.  
Bace. & J. da. , P. A.  
Ba. , Mv. a. , T. e. . , S. he. & See.  
Ba. A. ea. Ca. d. g. A. ca. e. , P. A.  
M. . Mcl. e. Be. e.  
D. a. d. M. l. . L. B. a. .  
M. J. e. Ca. a. .  
D. a. d. M. La. C. Ca. e.  
Ca. e. & Ve. a. c. , l. c.  
R. cha. d. a. d. C. e. a. C. be.  
K. a. d. Ph. D. ge.  
The Ea. G. v. , l. c.  
Le. . F. . , M. D.  
F. da. Ca. d. a. cv. a. l. . v. e. , P. A.  
D. S. a. e. . Gv. a. e. a. a.  
M. a. d. M. V. H. e.  
H. . a. l. a. e. Se. ce.  
Hughe. F. v. da. , l. c.  
Hv. a. a.  
M. a. d. M. T. J. h.  
M. B. g. Kea. e.  
Ga. a. d. D. a. K. ch.  
La. e. W. d. de.  
L. fe. L. F. v. da. , l. c.  
M. & D. Ca. e. l. c.  
Macfa. a. e. , Fe. gv. & McMv. e.  
McE. a. C. ac. g. l. c.  
The Ne. Y. Ya. ee. Ta. a. F. v. da. , l. c.  
Ma. a. d. Debb. e. N. v.  
OSI Sv. Se. ce. , l. c.  
Ra. d. Ja. e. & A. ca. e.  
Rehab. a. & Eec. dag. . c. , P. A.  
R. T. G. & R. T. G. K. d.  
Sv. e. C. v. a. C. a. , l. c.  
The Ta. a. Ba. L. gh. . g/ L. gh. . g.  
F. v. da.



Bill Powell, Feld Entertainment, surrounded by the 2005 Circus committee.

U. ed. Hea. h. ca. e.  
USF C. ege. f. Med. c. e. , De. a. e. f.  
Sv. ge.  
USF De. a. e. f. A. e. he. . g.  
USF Hea. h.  
The Wa. e. F. v. da.  
The Ja. e. W. Wa. e. , III. Fa. .  
The W. -T. vch. C. a.

## Gifts from \$1,000 - \$4,999

A. R. Sa. age. & S. , l. c.  
Acce. a. B. ha. acev. ca. , l. c.  
AIG Va. c.  
D. M. chae. H. Ab. . a. d. D. Ka. e. We.  
Ba. f. F. da.  
M. a. d. M. Pe. e. Ba. .  
D. . Le. . a. d. E. d. Ba. e.  
Bea. d. F. v. da. , l. c.  
The Bec. G. v.  
Lav. a. a. d. Lee. Be. e.  
M. a. d. M. Le. e. M. Ba.  
B. e. Eec. c. C. a. , l. c.  
B. Sc. e. f. c. C. a. .  
D. a. d. M. V. c. D. B. e.  
B. c. , l. & A. . e. , M. D. , P. A.  
B. eade. Hea. h. ca. e.  
D. Ca. he. e. L. ch. Bv. c. h. a. d.  
M. B. b. Bv. c. h.

This page is a gift acknowledgment for the year ending December 31, 2005. The information is for informational purposes only and does not constitute an offer of any securities. For more information, please call (813) 844-7512. \*De. e. f. v. d. g. e. be. f. he. G. d. Ke. e. S. ce. .

# Donations to the Foundation for 2005

(c v d e b h e d g e a e a d g f)



2005 Annual Golf Tournament champions, left to right, Greg Inglehart, Chad Harrod, Steve Stagg and Gary Harrod.

M. Ba e J. Ca e  
 C v . C v e . g Se . ce C ., l c.  
 Ce eb  
 C . g v  
 CJS e A . a . G v  
 M . R be W . Ca  
 CLW Rea E a e Se . ce G v  
 Ja e a d LeR C . , J.  
 C a Ba  
 D . Wa e a d Ba ba a C v e  
 M . M . chae J . Da e  
 T a d Be Da .  
 M . Ja e H . Da .  
 Ted a d R b DeLaVe g e  
 See L . a d We d L . Dv b  
 O e c a d G e e Fe a de  
 E e a d He b F.  
 FKQ Ad e . . g & Ma e . g  
 F . da B d Se . ce , l c.  
 F . da Ped . a . c A c a e , LLC  
 F e , Wh e , B g g , Ba e , P.A.  
 F Med, l c.  
 Fv a a Hea hca e, l c.  
 Ge  
 Ju . a d Da . e G ee a d

Gu . da  
 Ha d C v c . C a , LLC  
 \*Sa a d Fa e Ha e  
 Ke h a d Cha d a He h e  
 J.C. a d Ha e He  
 H c F d Se . ce  
 Sa H . H v , M.D.  
 R a d Ee . H ff  
 The l e g a F v da .  
 Ja e & A Sh be g Cha . ab e T v  
 M . a d M . Ja e A . J e e  
 B a d J h , M.D.  
 A d e a d A J da  
 R c a d Jea e K v e  
 K l c a e d  
 Leh a B he  
 D . J h Le e a d Fa .  
 Le & Jvd S v F v da . , l c.  
 M . L da R . L de bec  
 Ma c F . L e , M.D.  
 Lvc C . L e, M.D.  
 M . C a v d a A . Mah e  
 M . Ja a Ma ecc  
 M . Jea M . Ma e  
 Me . a USA, l c.  
 M . Ma M e  
 M . Hea hca e S e  
 M . L v A M .  
 J a d Sa d Mv a  
 Dea a Ne a d T b Ha  
 N N d , l c.  
 M . a d M . Ed Oe ch ae ge  
 J h a d Mav ee Ogde  
 M . G ge K . O e  
 Ov bac . Sea h v e, l c.  
 D . a d M . E a Pac e

D . a d M . Cha e Pa da  
 The Pa Ba  
 M . A Pa a e  
 Bvd a d Ma E he Pa e  
 M . Ra Pa  
 M . Jvd h M . P e  
 P . ce Rea E a e  
 M . Ge a d P . ce  
 P c C v . ca . f Ta a , l c.  
 Rade , Th a , Y & Ca , P.A.  
 Ra & Pa e , l c.  
 Ree e l M ca  
 RMCP e G v  
 M . a d M . Da d K . R bb , ll  
 R che D ag . c C .  
 R che Lab a e , l c.  
 M . a d M . Jee P . R  
 Sa . C v b F v da .  
 M . L da Se b  
 M . J e f f e Se . c  
 M . D a d Sha b . , ll  
 See e a d E e Sh  
 \*M . a d M . A be J . S a  
 M . a d M . R be S a  
 Se . c ce , l c.  
 S e Le b ge  
 M . a d M . J e h W . Tagga  
 Tagga P e e , L d.  
 The Ta a Ba Hea . g & Ba a ce Ce e  
 Ta a Ba Pa . c Sv ge , l c.  
 Ta a P Av h .  
 The T . E e e C .  
 M . a d M . J h T . T vch , J.  
 T e Ad a ced MRI, L d.  
 T e a Ke e  
 USFD . . f Nev v ge

M . Ka e Va Ceaf  
 D . a d M . Pa Va . vde  
 V . & T . H e P e Mg , LLC  
 V . g . a H . E d e Fv d  
 Wach . a l v a ce Se . ce  
 D . Evge e Wa d a d D . De . e A e a ga  
 D . a d M . Sa ve S . We e  
 M . Sv a Wh e  
 The Wh e Ra C a  
 M . a d M . R cha d A . W d  
 The Ye d F v da . , l c.

## Gifts from \$500 - \$999

M . Che M . Ada  
 M . Da . a R . A ad  
 Av e & McMv e , P.A.  
 M . She . Ba da  
 M . a d M . J h l . Ba d  
 Tvd a d Ma . Ba  
 Re . D . a d M . W a J . Baugh  
 BBFP . . g S v .  
 M . Jvd h B h  
 M . a d M . Cha e F . B ba d  
 M . T . h B  
 M . Ma . Bv ge , J.  
 M . Ga Ca h v  
 Ca d a Med ca , l c.  
 Ce a Ma e a ce & We d g  
 M . a d M . Ge a d J . Ce v .  
 D . Pav A . Che e . c  
 D . Ta a a Ca d ge  
 Te e a d J e Ca  
 M . Na c C be  
 M . Dea C eech  
 M . Lv Cv a  
 De . g Ce a

# Donations to the Foundation for 2005

( c v d e b h e d g e a e a d g f )

Na c a d Ha deWaa  
 D.a F. labe Ge e a C ac  
 M.a d M .Je D ge  
 M.a d M .A.G.D e  
 M.Ra D c b  
 M.Ja e L E  
 M .Ma Lee Nv a Fa .  
 M.a d M .M e F e  
 M .L da Fv ch .  
 M.a d M .Rvd f A.Ga a  
 M .Maja Gf  
 M .Da .d M.G  
 M .Ca h E.G a  
 M .Ke L Ga  
 M .Ka h S.G d  
 A de a d Ge ge Ga . g  
 Th a a d Jea Ga a  
 M.Pav Ha e  
 D .M ha ed He a a d  
 Ra e de Bv a a a  
 M.Vc a He b  
 He d Rea E a e Ad . , l c.  
 Le . a d Sa H , III  
 M .Pe a H a  
 IBM I e a . a Fv da.  
 M .Ka e Jac b  
 Ja .K g  
 M .Hugh E.J e  
 M .Mac a J e  
 M .Ma A J  
 M .Be e A.Kee e  
 M .R b Ke e  
 M .Ka .a K e h  
 K v e L .ed Pa e h , L.d.  
 M .R e e K v e  
 Le A a d  
 L.be See E ec , l c.

M.a d M .A h W.L e  
 M.Wa e Mabe  
 MacD. Fede a Ced U .  
 M .Ke e h L.MacRae  
 M.J h D.Ma a  
 Ma e P e Tech ge  
 M .Sha McLaugh.  
 Ka e M e, RN (AECC)  
 M .Ka dace M ha  
 M .Ka h M  
 M .Be M e  
 Ja e a d T. Mv h  
 M .A a L a S.Nc a a  
 M .V.g a M.Pa e  
 M .R a d Pe e  
 M .Da e e R.P.g a  
 Pa . v Ba  
 Fede .c a d Ma P v b  
 M .Te G.P.ce  
 Pvb. Sv e Ma e Cha .e , l c.  
 J a ha a d C.gde Pvd a  
 M.a d M .W.a Ja Ra e  
 M.J e Re .c  
 M .Debbe Re e  
 Da a d Deb a R.gg  
 M.a d M .Re e R d.gve  
 M .A ge a A.R a .  
 M.a d M .Mac R  
 D.a d M .Ae a de S.R e v g, II  
 R a , A a e , J e , Rv & Gv , P.A.  
 Ka a d Ma c Sach  
 M .J h Sc a  
 M .R be M.Sha  
 M .Th a J.Sha , III  
 D.a d M .Da .d Sha .  
 M .Sv a Sha

M .Sh e S be  
 Sv h Ta a Med.ca G v .P.A.  
 D.a d M .W.a N.S e ac  
 M .V. ce S e a a  
 M .Ra e h S . a a  
 M .R a C.S.C a  
 M .She e D.Sa h  
 M .Jvd h M.S e  
 M .Jea e e Re ha S e e  
 Jac S e a d Fa .  
 Ta a Me . a Aea YMCA, l c.  
 M.a d M .Pav C. Ta h  
 TGH Ae ed  
 TGH Ca e Ma age e  
 M.a d M .Te Ta v .  
 U.S.F d e .ce, l c.  
 M.a d M .Cha e Uh.g  
 U.f Na e a e C a , l c.  
 M .M.chae a L  
 M .Che We e  
 M .Ja e B. We b  
 M .Ca We e a d  
 D .Cha e E.W.gh a d  
 D.a e S.(Ragga d) W.gh  
 M.a d M .Th a Za b  
 U v a M.Za ce, RN

## Gifts from \$100 - \$499

M .Rache Aba . a  
 D .Na .A.Abe  
 R h .Ac a a, R.N.  
 M .Rache M.A e ge  
 M .He e E.A e  
 M .L a A.A e  
 M .Ce . A e e  
 M .S .e L.A de , J.



Golfers Joe Taggart and Dick Beard enjoy the Annual Golf Tournament awards dinner.

M .Ma L.A c a  
 M .R b D.A .  
 M .Se ha .e Av .  
 M .Ja e A  
 M .Pa .c a Ba d  
 M .Ka hee M.Ba  
 M .L a S.Ba e  
 Mav ee a d Sa Beav ega d  
 M .Ja e A de B che  
 M .R a E.B gv h  
 J h a d E . B d  
 M .Ja e L.B h  
 M .R ge L.B e  
 M .Ke e B ad  
 Be a d Ca . e B ee  
 Be e Med.ca, l c.  
 M .Be B  
 M .Ma ge B  
 M .M.chae D.B  
 M .Nc e M.B  
 M .Je e B e  
 M.a d M .A h B v  
 M.a d M .Ed a d A.B v  
 Sa d a a d R be Bvc e  
 M.a d M .Ha d Cad e  
 M .Be da J.Ca be

This information is provided for informational purposes only. It is not intended to constitute an offer of insurance or any other financial product. For more information, please contact your agent or the Foundation for 2005 at (813) 844-7512. \*De e f v d g e be f he G d Ke e S ce .

# Donations to the Foundation for 2005

( c v d e b h e d g e a e a d g f )



Tampa Tribune Editorial Page Editor, Rosemary Goudreau (center), and scrub tech Barry Hudson (right), observed Dr. Cedric Sheffield (left) repair a fragile heart valve.

M. Ma W. Ca be  
 M. Me ed. h L. Ca  
 D. Ca he. e L. Ca v bba  
 D. R be a d Bea a Ca a a  
 M. Mau ee A. Ca .  
 CEO C v c f Ta a Ba , l c.  
 C & T Cha a  
 M. Ka e Cha e  
 M. Ja e Ch ea  
 M. a d M. Ja e W. Ca  
 M. Cha e E. C e e a d  
 M. R da S. C. c. -Ga e  
 M. Da e C i a  
 M. K e M. C . , J.  
 M. R be R. C a a  
 M. Pa C e  
 M. B vce C  
 M. Ja e D. C b  
 M. Da d R. Da e  
 M. Ma ga e Da  
 M. a d M. Pav W. Da ah , J.  
 M. Ma ga e E. Da .  
 M. R e Da .  
 M. Ca a. a N. Deca e

M. Ra G. De he , III  
 M. Jvd De  
 M. L . De d  
 M. J . De a  
 M. a d M. Cha e W. D eg  
 M. a d M. R e L. D e  
 M. D a D vga  
 D. a d M. Ga h R. De  
 M. He Dveffe  
 M. Ma d J. Dv a a  
 M. G a M. Dv  
 M. J h P. Dv  
 D. R de Dv ha  
 M. De . e D e  
 M. a d M. R be S. Ed a d  
 M. a d M. A h D. E b  
 M. Ma i . e E c b  
 M. Ge da F. E a  
 R ba d J. E a  
 M. T a Fab .  
 M. D ah T. Fa c  
 M. D ee Fe a de  
 M. Na c Lee Fe a de  
 F. a ca Pa . g  
 A ca . f Ta a Ba  
 M. a d M. Cha e S. F. ch  
 L a d Se he Fv ha  
 M. a d M. J. Evge e F ga , J.  
 M. J h H. F ga  
 M. a d M. Pav L. F d  
 M. Fa ce J. F a  
 M. Sha F v . e  
 N a E. F e  
 M. Ma ga e F a .  
 M. Ka e L. Fv ga e  
 M. Ed Ga d  
 M. Ma Ga a d

M. a d M. R ge C. Ga e  
 M. Tace L. G be  
 M. Tac Gee  
 M. a d M. Ra Gv a  
 M. Ma ha Ha be  
 M. Ja e D. Ha . , J.  
 M. Na c Ha e  
 M. D a M. He  
 M. E . c He b  
 M. Mau . c He a  
 M. Sac He e  
 M. Ed v d C. H  
 M. Jac . e H a d  
 M. M E. H  
 M. Ge a d . e S. H d  
 Sv a a d R ge H a d  
 M. Mau ee M. Hughe  
 M. J Hughe -La d  
 M. J e h Hv  
 M. A e e Jac .  
 M. E a . a Ja . a  
 C e a d M. che Jeff . e  
 M. Ka hee Y. Je .  
 M. Ka h J. Je e  
 M. M . M. J h  
 M. Be J h a d M. Ja e Wh a e  
 M. Ka he . e Jvdd  
 M. Cee e Ka e b  
 M. a d M. M. chae E. Ka e  
 Pa . ca C. Ka , R.N.  
 M. M a K d e  
 M. T a A. K i ba  
 M. Ca i e K i d  
 M. Da e A. K i gh  
 M. Sha K i gh  
 M. Ka hee M. K ch

M. Ke h Kav he  
 M. a d M. Ed . P. K . ege  
 M. M. chae Labbe  
 M. Ca e ce H. La e , J.  
 La d A e . ca La e T e  
 M. R be a C. La d  
 M. Da . e e La . e  
 M. a d M. Pe e D. La R e  
 M. L da F. La  
 M. O ga L. Le B  
 M. J a M. Le e  
 M. a d M. The d e J. L . h  
 M. Jea e e L a  
 M. a d M. A ge L e  
 M. Me . a L  
 M. Ca . . a Luca  
 M. S i e Mabb  
 Sv a Macha e , RN  
 M. The e a Ma e a  
 D. a d M. De a a d Ma ga  
 M. Deb ah Ma .  
 M. a d M. G eg Ma .  
 M. Ma . a P. Mau b  
 M. Ma L. McCv ugh  
 M. C . e McDa e  
 M. Ca e T. McD e  
 M. Sv a McDuff e  
 Ja e a d J h McE e  
 M. a d M. Ke McKe . g  
 M. Da . e Mecca , III  
 M. Sa d a Meh e  
 Me . P fe . a Ca . g , l c.  
 M. a d M. M. chae M e  
 M. Le e "Le " M. e , J.  
 M. L da M . ga  
 M. Sv a M e



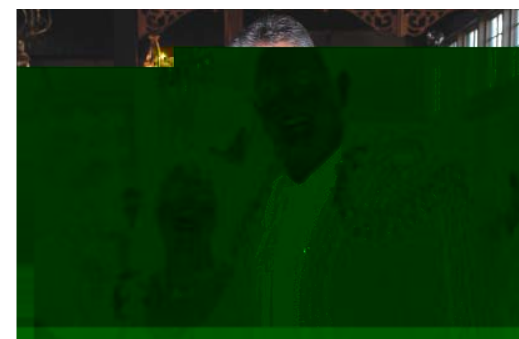
# Donations to the Foundation for 2005

( include birth date as applicable )

M. Th a D. M e  
 MORE HEALTH, I c.  
 M. A e e M ga .  
 M. J a M u d  
 M. Na c J. M u e  
 M. a d M . Ha d W. M u . , J.  
 M. Je . fe A. M u h  
 M. a d M . J h M u h  
 M. a d M . Cha e W. Ne  
 M. Ja . e C. N b . , MBA  
 M. R u h M. N e  
 Ja e N a , M.D., P.A.  
 Off. ce Ke , I c.  
 M. Pa . c a R. Ogde  
 M. J O .  
 M. Ja e O ega  
 M. Pa . c a O b e  
 M. Ma . v P. Pabe  
 M. Ja e C. Padge  
 M. L a D. Pa a a  
 M. Deb a C. Pa  
 M. A e Pa e  
 M. Sabee a Pa h u a .  
 M. La A. Pe ve  
 M. S v a Ph . -C e  
 M. Ca e P. cc e .  
 M. Je . fe P e  
 M. R be a A. P e  
 He be H. P e a ce, M.D.  
 M. a d M . J a ha P e  
 M. a d M . J h R. P e  
 P e fe ed C ec . & Ma / age e Se . ce ,  
 I c.  
 Qu . c. Med Ca  
 M. Ke . M. Rad  
 D. a d M . Haf . M. A. Rah a  
 The Ra Ma I . ga .

L u c a E. Ra . , M.D.  
 M. a d M . Da e K. Re ha  
 M. Ma Rhea  
 M. a d M . Be a d G. R. gb  
 M. C a R e  
 M. Ke e h A. R c  
 D. a d M . Ca R a  
 M. a d M . Pav A. R u e  
 M. Ce . a R a  
 M. Pa Sa de  
 M. A Sa de  
 M. J u d h C. Sa ag  
 Na e d a S. Sa , M.D.  
 M. E . abe h M. Sav de  
 M. D . A. Sch d  
 M. Pav a Seg a e  
 M. J e J e Se a  
 M. J A Shea  
 M. Ma Sh  
 M. Ka e S d e  
 M. Ed a d Se be  
 D. A d e S e a  
 B ad, Pa . a d Sa S  
 M. T h C. S c a  
 M. He e M. S h  
 M. a d M . R S h  
 M. M. chae S. Ja e  
 M. D. a e S ah b v ch  
 M. Ka e Sa h  
 M. J e S a f  
 Ka h S v a e , ARNP  
 M. J a S v a  
 M. She S a  
 M. A D. S a . c  
 The Ta c Fa . Fu da . , I c.  
 TGH H u a Re v ce

TGH ICU I & II  
 TGH Nu e Ma age e C v c  
 TGH Nu . g Pa c . ce Fu  
 TGH Pa . e Acc v  
 TGH Pa . e Ca e Se . ce  
 M. Ma Th a  
 M. Pegg Th  
 M. Sa ah Th e  
 M. Ph . R. Th  
 M. J h E. Ta v  
 M. Evge . a M. Ta .  
 M. Ja . Tu cc  
 R. cha d a d De . e Va de We f  
 M. Ca he . e Va  
 M. Ma v . c J. Ve be  
 M. Bea . Va e  
 M. I a Va e  
 M. Fa Wa e , J.  
 M. Na c Ta Wa d  
 M. Ca he . e L. He d We  
 M. Te . Whee e  
 M. Ca h We  
 M. Cec . a W . a  
 M. F d W . a  
 M. Jea M. W . a  
 M. Na ha M. W . a  
 M. Sa d a W . a  
 M. Sc R. W . a  
 M. L a J. W  
 M. He be E. W d  
 M. R ge S. W d  
 M. Ch . e M. W . gh  
 M. Ka . a E. Y e  
 M. R be Y v g  
 M. Ed a d M. Zeb  
 M. A d e a Ze a



Foundation Trustee Rick Kouwe and wife Jeannie at the Gala.

M. Y a da Z ad e  
 M. S a Z v be

## Gifts up to \$99

M. Je v Ab aha e  
 M. Ca h Accu  
 M. Je . fe Ac a  
 Da . a Ada , Ph.D.  
 Cha a Ke Add  
 M. Ha dee Ade e  
 M. Jea Adv  
 M. E eba Ag . .  
 M. A a A a  
 M. Ka e A dah da  
 M. A . da A da d  
 M. Be e A e a de  
 M. L d a F. A.  
 M. Ca L. A e  
 M. Cha e A e  
 M. Re ee A e  
 M. De . e L. A . e  
 M. Ma v ee A g  
 S v . Av . , R.N.  
 M. E ce A a ad  
 M. A . ca A a be  
 M. A a A

# Donations to the Foundation for 2005

( c u d e b h e d g e a e a d g f )



Foundation Trustees Gene McNichols and Bryan Guyton at the Annual Dinner.

M . G e g o a A d e  
 M . M a g a e h a G e d a A d e  
 M . N a a e A d e  
 M . S e e A d e  
 M . V a e e J . A d e  
 M . A h b F . A d e III  
 M . M a J A d e  
 M . G e g e A g e  
 M . R a f a e A a  
 M . L . b e h A  
 M . L . d a A  
 M . J e v M . A a a  
 M . C a e a B a c a g  
 M . D e b a h B a e  
 M . F d B a e  
 M . E e e B a e  
 M . F e a d B a d e  
 M . T h e a B a d a d  
 M . B a b a a A . B a  
 M . P e g g A . B a b e  
 M . E a B a d e  
 M . W a e R . B a f d  
 M . J v a a A . B a v a  
 M . B e d a K . B a e e  
 M . V e a B e d  
 M . A e a M . B e e

B . a J . a d J E e B e e  
 M . M a g a e C . B e c h e  
 M . J e B e d e  
 M . H B e e  
 M . I c . B e e  
 M . W a G . B e e  
 M . K a M . B e g e  
 M . T h J . B e a d  
 M . N e B e c a  
 M . A e a B e c h e  
 M . P a c a A . B . d e  
 M . A b d e a h B . h a  
 D a a & A B a c  
 M . K e . A . B a e  
 M . M a v e C . B a c  
 M . M a a R . B a c  
 M . D a e M . B c v  
 M . N a v e e B d  
 M . L . d a M . B e c h e  
 M . M a h a M . B a . c h a  
 M . P a v . e B . g  
 M . M a a B a d  
 M . P a v B a d  
 M . E a M . B e  
 M . L a B a r  
 M . A a a B e e  
 M . K a h e e A . B e  
 M . L a M . B v e a v  
 M . A g e a B  
 M . D e c B  
 M . J a c v e . e B  
 M . M c h e e B  
 M . R v h B e  
 M . A d e B v  
 M . B a b a a P . B e  
 M . A h B v f f

M . A e . B v g  
 M . M a a C a c e e  
 M . M . c a L . C a b e  
 E . c M . C a e . , M . D .  
 M . M a a C . C a a e  
 M . R v b C a b e  
 M . B a b a a C a  
 M . T a C a a a  
 M . A g e C a a v  
 M . E . a b e h C a a v  
 M . C h a e E . C a e  
 M . L a C a e  
 M . L d a C a e  
 M . R b e E . C a e  
 M . A d e M . C a a h  
 M . M a h a C a e  
 M . E d C a  
 M . M a E e C h a c  
 M . J h e C . C h a a  
 M . G e d e C h a e a g e  
 M . M a e L . C h a e  
 M . N b e C h a e  
 M . Y a d a C h a  
 M . A a M a e C e a  
 M . a d M . W a e F . C a  
 M . K a C a  
 M . S v a C a  
 M . T a e a C a  
 M . C a e C a  
 M . L e M . C e a d  
 M . H e c C e e e  
 M . C a L . C e e  
 M . M a g a e C c h a d  
 M . D a a C e a  
 M . L a V e e C e a  
 M . C a h e e C e

M . S a C a d  
 M . D e C  
 M . P a e a C  
 M . B e a C  
 M . N e C e a  
 M . W a e C  
 M . L a e C e  
 M . C h a e C e v  
 M . L a C v  
 M . N . C v e  
 M . C a L . C a f  
 M . S h a e R . C a g  
 M . A e . C e  
 M . R c c A . C . a f v  
 M . R c h a d M . C e  
 M . A v e a C v a a  
 M . B e a d e D . C v e  
 M . D a e C v  
 M . L e M . C v e  
 M . L e D a d  
 M . R h d a D a e  
 M . M a a J . D a a  
 M . C h . a M . D a  
 M . I . D e L a a  
 M . W e d D e C e a v  
 M . R D e a a e  
 M . L v . e D e v e a v  
 M . M a T . D e S e g e  
 M . L v . A . D a  
 M . C a e D e v d e  
 M . A c e D e  
 M . A a M . D . g v e  
 M . F a c D  
 M . L d a D  
 M . E . a b e h D e  
 M . D e . D e

# Donations to the Foundation for 2005

( c v d e b h e d g e a e a d g f )

M . Z d . a a D ave  
 D a . d a d G ace D v a . a  
 M . J v d . h D acv a  
 M . C a A . D a e  
 M . K a h e e D v  
 L e a d P a v a D e  
 M . M a h e V . E a e  
 M . M a v e E c h a a . a  
 M . L v c E d d  
 M . G a d E d a d  
 M . E . c h E c h g e  
 M . J e . c a E . a  
 M . S v a H . E . . e  
 M . P e e E  
 M . C e c e W a e a E . g  
 M . K a a E . e  
 M . M E v . c e  
 M . J e h A . E a g e . .  
 M . J h K . E a  
 M . R b F a g e  
 M . D a M . F a .  
 M . J e . f e L . F e e a b e d  
 M . L a F e  
 M . L v F . F e a d e  
 M . J a e F e  
 M . a d M . R . c h a d F . F . g e a d  
 M . K a . a F a d e  
 M . D a d F d  
 M . J c e F d  
 M . J a e D . F  
 M . S c h e e F d  
 M . M a a J . F e  
 M . B e F a c  
 M . J v d F  
 D . J g e A . G a d e a  
 M . M a . G a d

M . S e h a . e G a a b  
 M . R a . G a e  
 M . B a d G a e  
 M . J v e G a c a  
 M . L a v . e G a d e  
 M . S a G a e  
 M . V a d e a G a .  
 M . J a c . e G a  
 M . a d M . D . . c . G e b b a  
 M . D a A . G e b b a  
 M . A G e a d  
 M . L a v a A . G  
 M . K a h e e J . G e  
 M . R b e G e  
 M . B a G g g  
 M . P a v G e  
 M . S v e G e  
 M . E d a G a e  
 M . G e g . G a e  
 M . H e . a G a e  
 M . M g v e G a e  
 M . K e e G a  
 M . M a a G d  
 M . W e d G d - C e e .  
 M . B e G d  
 M . R . c h a d T . G v c  
 M . C a G a h a  
 M . M e G a h a  
 M . C h a a e C . G a  
 M . H a e M . G a  
 M . V . g . a K . G e e  
 M . S a b . a R c h e e G e e e  
 M . D a R . G . f f  
 M . G a G . f f  
 M . V a e . e G . f f  
 M . C a . e G . f f - E . e

M . C h a G . f f  
 M . M a h a J . G v e d g e  
 M . N e G v . e e  
 M . C a e G v a  
 M . A b e H a e  
 M . T . a H a e  
 M . R a a d H a b a j a  
 S i a M . H a d , R . N .  
 M . K a . a D . H a .  
 M . A B . H a a  
 M . L a v a E . H a e  
 M . a d M . G e g e H a v b e  
 M . M a g e H a  
 M . L e e C . H e e  
 M . M a g a e A . H e  
 M . D a e e H e b v  
 M . B a E . H e e . g  
 M . M a . H c b  
 M . D h H  
 M . C a e H a d  
 M . E . a b e h H a d  
 M . W . S c H v g h e r  
 M . D e . e H v  
 M . J e a e e L a  
 M . G e l . a  
 M . K b e l .  
 B a d D e b b e l e  
 M . T a . l a  
 M . H a . e l e  
 M . S h a l e  
 J . P . M g a C h a e F v d a .  
 M . T a a J a c  
 M . W . a J a c  
 M . S v J a c b  
 M . D e e J e f f e  
 M . D h J e .



left to right - Former Mayor Dick Greco, Linda McClintock Greco, David Straz and the Circus Ringmaster at the Circus Patrons' Party.

M . L d a F . J e .  
 M . T a c A . J e .  
 M . D a J e e  
 M . l a b e J  
 M . R e a J . e  
 M . B a b a a J . J h  
 M . E a e M . J h  
 M . J e a C . J h  
 M . S v a M . J h  
 M . S h e . C . J e  
 M . T a J d a  
 M . M e . a A . J e h  
 D . B e d a J v c  
 M . T h a K e a e  
 M . G e g e K e a  
 M . M c h a e K e e  
 M . T v d K e . g e  
 M . S e h a . e K e h a .  
 M . J e h h . K a  
 M . D a e W . K a e  
 M . J a e M . K a v a  
 M . S a K v a g a a  
 M . C e c e T . L a d d  
 M . D e b a J . L a h e a  
 M . J e f f e L a e

# Donations to the Foundation for 2005

( c v d e b h e d g e a e a d g f )



**TECO Energy President John Ramil scrubbed in with Dr. Alex Rosemurgy during the White Coat Program.**

M . Hea he La gd c  
 M . Ke e h N. La ge  
 M . Ed. h La ha  
 M . Da E. La e a  
 M . Sv a a L. La e -A dv  
 M . G a La  
 M . De . e La he  
 M . D a La e ce  
 M . Deb a Leagre  
 M . Nc e J. Lec a  
 M . Ca L. LeC  
 M . a d M . Wa e Leb  
 M . Sh e Le .  
 M . Th a L. Le .  
 M . I ac Le .  
 M . L da L. Lre e  
 M . Da d Z. L ga  
 M . Da L g  
 M . Rch L g  
 M . R a L e -O .  
 M . Ma . be L e -R d . gve  
 Ke L e , RN  
 M . B a e Lv b  
 M . E e Lv g  
 M . J e A. Lv g  
 M . Ma e T. Lv g

M . Kha . d Mah vd  
 M . K . e Ma  
 M . S b Ma .  
 M . A ah Ma . a  
 M . Ge Ma cha e  
 M . Ka e Ma cv  
 M . L da S. Ma .  
 M . Ch . a Ma . e  
 M . Sc Ma e  
 M . De . Ma  
 Ha d a d Ma Ma  
 M . Ja e Ma e  
 Te e a McC , RN  
 M . B . e B. McD vge  
 M . Pegg M. McE .  
 M . Ca he . e McKa  
 M . S ee a McPhe  
 M . Te e a McRe d  
 M . J ha Me e de  
 M . M . ca Me e de  
 M . M . chae R. Me e de  
 M . M . chae Me  
 M . Ed a M . gve  
 M . Be a d M . e  
 M . a d M . Pe e M a  
 M . a d M . A . M e  
 M . M . chae T. M e  
 M . S b M .  
 M . R be J. M a d, III  
 I a a d L e a M .  
 M . Gab . e M a  
 M . Va e . e M . M . che  
 M . Hv . Y M  
 M . Sa d a M be  
 Se he F. M ch, Rabb  
 M . Nah d M ghada  
 M . Wa e E. M de . e

M . J e M e  
 M . M . che e M e  
 M . Be . ce M e  
 D . Sha M . M e  
 M . Sc M . M e  
 M . O . a J. M e  
 M . Ka h O. Mv ge  
 M . a d M . E . c Mv h  
 T a d Sve Mv h  
 M . De e L. Mv . c  
 M . L da Mv h  
 M . Pa e a A. Nage  
 M . L da Na  
 M . Be P. Na h  
 M . Deb ah Na h  
 M . Cha e W. Ne , J.  
 M . Je . fe R. Ne  
 M . Hav Ngv e  
 M . Hv g Ngv e  
 M . Deb ah N  
 M . Da e O.C -B aba  
 M . G e d O.F ahe  
 M . Ca J. O . a  
 M . Sha M . O . e  
 M . Le . e . a O a ge  
 M . Sha a O  
 Ba ba a d Ke e h O  
 M . Je O e  
 M . Maude F. Pa a d  
 M . Ge a d Pa . e . , J.  
 M . He "T " Pa d , J.  
 Ja . ce M . Pa e , RN  
 M . W . e Pa  
 M . Ma T. Pa cva  
 M . A ge . a Pa cva -B e  
 M . Pv cha . Pa a a a  
 M . Rv a Pa e

M . Ma . a Pe a  
 M . S ace Pe e  
 M . R a ba Pe e -Na a  
 M . Da . Pe e -Sa che  
 M . Che Ph .  
 M . Ma v ee P . ce . g  
 M . Ca e . a Pe e b .  
 M . Chau a Pe ce  
 M . Sa ve Pe e  
 M . Ma . L . Pe  
 M . Ka hee Pe v c  
 M . Abe v P aa  
 M . Sa ah J. P . P be e  
 Je a d L v . e P gve  
 M . Ca a J. P a d  
 M . Ba P e  
 M . Da a P .  
 M . Hea he P d  
 M . Ga ga Pa had  
 M . J ce Pa he  
 M . Jv . Pa  
 M . He a P e a  
 M . Lea Pv e e  
 M . Rca d Qve ed  
 M . Ka he . e M . Qv  
 R ge a d She . a Ra e  
 M . Ed . Ra  
 M . Cha v a a Ra  
 M . R de . a Ra e  
 M . Sa d Ra e  
 M . D vga Rea e  
 M . Da . e . Re e  
 M . Ka he . e Re e  
 M . Ge ga a R . ce  
 M . L d C . R . cha d , J.  
 M . Ra d . R . cha d  
 M . R be R g

( c v d e b h e d g e a e a d g f )

M . Da R e a  
M . Fa c c R e a  
M . J h D . R e a  
M . Me . da R e a - R e e  
M . Ka he . e R b  
M . K . R b  
M . Rh da R b  
M . E b R b e  
M . E . ca R d . gve  
M . Ma . a R d . gve  
M . Va e . e R d . gve  
M . Jv e R ge  
M . Ye R ja  
M . Sa ah R  
M . Pa . ca D . R a  
M . R a R a  
M . Ma ve R ad  
M . Ma M . R  
M . Pav a R v e e  
M . Sa d a L . Rvd  
M . Nad e Rv gge  
M . Y e M . Rv edge  
M . E e Sa a a  
M . O he . a I . Sa ve  
M . Da Sa che  
M . Ne Sa che  
M . R be Sa che  
M . Ja . M . Sa de  
M . Ba ca Sa . ag  
M . Ma . a Sa . ag  
M . Ne Sa . ag  
M . Ye . Sa . ag  
M . Rv h M . Sav de  
M . Ge ge P . Scha c , III  
M . A h e Sch e bav  
M . Na ee . e Sch e ch  
M . M . che e L . Sch e

M . T . ca Schv e  
M . Be e Sc  
M . J h Sc  
M . L . da Sc  
M . B . a Sc . e  
M . J e Seebe a  
M . E e Seg a a  
M . J ha a Segv a  
M . E a ve Se a v  
M . Ma . Se v eda - T e  
M . Jvd h J . She  
M . Da e P . She e  
M . Ch e S  
M . J h S  
M . Fa ce J . S . h  
M . We d S . h  
M . Ed . h V . S e be ge  
M . R e a . e S  
M . L . da S e  
M . Geg S e ce  
M . She a A ee S a  
M . S ace S a e a  
M . Da d S . C  
M . M . chae S a e  
M . Che S a . g  
M . Sha e e S e e  
M . Rv h S e a  
M . M . d ed S e  
M . a d M . E . A . S e  
M . J e h e Sv . a  
M . Ca Sv eda  
M . Ja e Tagge  
M . M . ca R . Ta a e a  
M . Le P . Ta g  
M . Ca Ta e  
M . Fa Ta a e  
M . L a e Ta

Ka Tech , RN  
M . Ba ba a Te bu  
M . G ace Th a  
M . J ce Th a  
M . La T a  
M . T . J . T e  
M . Maga . T e - Ga ca  
M . Xva Ta  
M . Ma S . Te .  
M . E a T . che a  
M . E a e J . T v . a  
M . F . . a Tv gade  
M . K be Uch . v a  
M . Ta Uh  
M . Ja U de d  
M . Ba che E . U . a  
M . Jva R . Va de  
M . Ta a Va e .  
Jv . e Va e ve a , RN , MSN  
M . Ma . a E . Va e  
M . W . a L . Va D . e , III  
M . Hec Va ga  
M . Jv . e A . Va ga  
M . R Vega  
M . T a L . Vega

# Building on Excellence Campaign - Employee Donors

(continued page & followed. 2005 February)



Posing with a clown at the Annual "Night at the Circus" is Tampa Bay Lightning President and Patrons' Party sponsor Ron Campbell.

M. Rache Aba . a  
 M. Je v Ab aha e  
 M. Ca h Accu  
 M. Je fe Ac a  
 Da a Ada , Ph.D.  
 Cha a Ke Add  
 M. Ha dee Ade e  
 M. Jea Adv  
 M. E eba Ag .  
 R h . Ac a a, R.N.  
 M. A a A a  
 M. Ka e A dah da  
 M. Rache M. Aege  
 M. Be .e Ae a de  
 M. L da F.A.  
 M. Da . a R. A ad  
 M. Ca L. A e  
 M. Cha e A e  
 M. He e E. A e  
 M. L a A. A e  
 M. Re ee A e  
 M. De .e L. A .e  
 M. Ma v ee A g  
 M. Ce . A e e

Sv . Av . , R.N.  
 M. E ce A a ad  
 M. A . ca A a be  
 M. A a A  
 M. G eg . a A de  
 M. Ma ga e ha Ge da A de  
 M. Na a .e A de  
 M. S .e L. A de , J.  
 M. S e e A de  
 M. Va e .e J. A de  
 M. A hb F. A de , III  
 M. Ma J A de  
 M. Ma L. A ca  
 M. Rafea A .a  
 M. L be h A  
 M. R b D. A .  
 M. L da A .  
 M. S e ha .e Av .  
 M. Ja e A  
 M. Je v M. A a a  
 M. Ca e a Baca . g  
 M. She . Bad a  
 M. Deb ah Ba e  
 M. F d Ba e  
 M. E ee Ba e  
 M. The a Bad ad  
 M. Pa .ca Ba d  
 M. Pegg A. Ba be  
 M. E a Ba de .  
 M. Ka hee M. Ba  
 M. Wa e R. Ba f d  
 Re . D . a d M . W . a J. Vaugh  
 M. Jva a A. Bav . a  
 M. L a S. Ba e  
 M. Be da K. Ba e e  
 Ma v ee a d Sa Beav ega d

M. V . e a Bed  
 M. A . e a M. Bee e  
 B . a a d J E e Bee  
 M. Ma ga e C. Be che  
 M. J e Be de .  
 M. Ic . Be e  
 M. W . a G. Be e  
 M. K a m. Be ge  
 M. T h J. Be a d  
 M. Ne . Be ca  
 M. A e a Be che  
 M. Pa .ca A. B de  
 M. Abde ah . B ha .  
 Da a a d A Bac  
 M. Ke . A. Ba e  
 M. Ma ve C. Ba c  
 M. Ma . a R. Ba c  
 M. Ja e A de B che  
 M. Jvd h B h  
 M. D a e M. B c v  
 M. Nav ee B d .  
 M. L da M. B e che  
 M. R a E. B gv h  
 M. a d M . Cha e F. B ba d  
 J h a d E . B d  
 M. Ma ha M. B a .cha  
 M. Ja e L. B h  
 M. Pav . e B . g  
 M. Ma . a B a d  
 M. Pav B a d  
 M. R ge L. B e  
 M. E a M. B e  
 M. L a B a  
 M. Ke . e B ad  
 M. A a a B e e  
 M. Ka hee A. B e

M. A B . dg  
 M. T . h B  
 M. L a M. B v eav  
 M. A ge a B  
 M. De .c . B  
 M. Jac ve . e B  
 M. Ma ge B  
 M. Mchae D. B  
 M. Mche e B  
 M. Nc e M. B  
 M. Je e B e  
 M. Rv h B e  
 M. A de B v  
 M. Ba ba a P. B e .  
 M. A h Buff  
 M. Ma . Bv ge , J.  
 M. A e . Bv g  
 M. Ma . a Cace e  
 M. Ga Ca h v  
 M. Be da J. Ca be  
 M. Ma W. Ca be  
 M. M .ca L. Ca be  
 M. Ma . a C. Ca a e  
 M. Rvb Ca b e  
 M. Ba ba a Ca  
 M. T a Ca a a  
 M. A ge Ca a v.  
 M. E . abe h Ca a v.  
 M. Me ed h L. Ca  
 M. Cha e E. Ca e  
 M. L a Ca e  
 M. L da Ca e  
 M. R be E. Ca e  
 M. A de M. Ca a h  
 M. Ma ha Ca e  
 M. Ma v ee A. Ca .

# Building on Excellence Campaign - Employee Donors

( c v d e e d g e a e & g f e c e e d . 2 0 0 5 f e e c a a g )

M. Ed Ca  
 M. Ma E e Chac  
 C & T Cha a  
 M. J h e C. Cha a  
 M. Ka e Cha e  
 M. Gede Cha e a g e  
 M. Ma e L. Cha e  
 M. N be Cha e  
 M. Y a da Cha  
 M. Ja e Ch ea  
 M. A a Ma e C e a  
 D. Ta a a C a d g e  
 M. Ka Ca  
 M. Sv a Ca  
 M. Ta e a Ca  
 M. a d M. Ja e W. Ca  
 M. Ca e Ca  
 M. Hec Ce e e  
 M. Cha e E. Ce e a d  
 M. D a e C a  
 M. Da a C e a  
 M. La Ve e C e a  
 M. Ca he e C e  
 M. S a C ad  
 M. De C  
 M. K e M. C . , J.  
 M. Pa e a C  
 M. Be a C  
 M. Ne C e a  
 M. Wa e C  
 M. Pa C e  
 M. B vce C  
 M. La e C e  
 M. Cha e C e v  
 M. L a C v  
 M. N C v e  
 M. Ca L. C af

M. Sha e R. C a g  
 M. Dea C eech  
 M. Ae. Ce  
 M. R. cc. A. C. afv  
 M. R. cha d M. C e  
 M. Be ad e D. Cv e  
 M. Lv Cv a  
 M. L e M. Cv e  
 M. Da d R. Da e  
 M. Le Da d  
 M. M. chae J. Da e  
 M. Rh da Da e  
 T a d Be Da  
 M. Ma a J. Da a  
 M. Ja e H. Da  
 M. R e Da  
 M. Ch a M. Da  
 M. I. De La a  
 M. Ca a. a N. Deca e  
 M. We d De C eav  
 Ted a d R b De La Ve g e  
 M. R De a a e  
 M. Ra G. De he, III  
 M. L v e De v eav  
 M. Jvd De  
 M. L De d  
 M. Ma T. De S ege e  
 M. Lv A. D a  
 M. Ca e D e v d e  
 M. A ce D e  
 M. J D e a  
 M. Ra D c b  
 M. A a M. D gve  
 M. Fa c D  
 M. L da D  
 M. E. abe h D e  
 M. D e D e

M. Zd a a D ave  
 M. D a D vga  
 Da d a d G ace D v a a  
 M. Jvd h D acv a  
 M. Ca A. D a e  
 M. He Dveffe  
 M. Ma d J. Dv a a  
 M. G a M. Dv  
 M. J h P. Dv  
 M. Ka hee Dv  
 S e e L. a d We d L. Dv b  
 L e a d Pav a D e  
 M. Ma he V. Ea e  
 M. Ma ve Echa a a  
 M. Lvc Ed d  
 M. Gad Ed a d  
 M. Ja e L. E  
 M. Je ca E a  
 M. Sv a H. E . . e  
 M. Pe e E  
 M. a d M. A h D. E c b  
 M. Ma l e E c b  
 M. Ka a E e  
 M. M Ev ce  
 M. J e h A. E a ge .  
 M. Ge da F. E a  
 M. T a Fab .  
 M. R b Fage  
 M. D ah T. Fa c  
 M. D a M. Fa  
 M. Je fe L. Fee abe d  
 M. L a Fe  
 M. D ee Fe a de  
 M. Lv F. Fe a de  
 M. Na c Lee Fe a de  
 O ec a d G e e Fe a de  
 E e a d He b F.



TGH President and CEO Ron Hytoff and wife Eleni enjoying the Columbia Restaurant at the Gala.

M. Ja e F e  
 M. Ka a Fa de  
 M. D ad F d  
 M. J ce F d  
 L a d Se he Fvha  
 M. Ja e D. F  
 M. a d M. Pav L. F d  
 M. Sch e e F d  
 M. Fa ce J. F a  
 M. Ma a J. F e  
 M. Sha Fv e  
 M. N a E. F e  
 M. Be Fa c  
 M. Jvd F  
 M. Ka e L. Fvga e  
 M. L da Fv ch .  
 D. J ge A. Gadea  
 M. Ma Gad  
 M. Se ha e Ga a b  
 M. R a. Ga e  
 M. Ed Ga d  
 M. B ad Ga e  
 M. Ma Ga a d  
 M. Jv e Ga c a  
 M. Lav e Ga d e  
 M. S a Ga e

# Building on Excellence Campaign - Employee Donors

(continued page & followed 2005 for employee)



Annual Dinner guest speaker Tampa Bay Buccaneer Shelton Quarles and his wife Damaris.

- M. Vadea Ga
- M. Jac.e Ga
- M. ad M. Rvd fA. Ga a
- M. D a A. Gebba
- M. A Ge ad
- M. Maja Gf
- M. Lava A. G
- M. Tace L. G be
- M. Da d M. G
- M. Cah E. G ga
- M. Kah ee J. G e
- M. Ke L Ga
- M. R be G e
- M. B a G gg
- M. Pav G e
- M. Sve G e
- M. Ed a G ae
- M. Geg . G ae
- M. He . a G ae
- M. M.gve G ae
- M. Ma a G d
- M. Be G d
- M. Kah S. G d
- M. R.chad T. G c
- M. Ca Gaha
- M. Me Gaha

- Th a ad Jea Ga a
- M. Cha a e C. Ga
- M. T ac Gee
- M. V. g a K. Gee
- M. Sab a R che e Gee e
- M. G a G ff
- M. Va e e G ff
- M. Ca e G ff -E e
- M. C ha G ff
- M. Ma ha J. Gu edge
- Lvc ad Ra Gu a
- M. Ne Gu e e
- M. Ca e Gu a
- M. A be Ha e
- M. Ma ha Ha be
- M. T. a Ha e
- M. Ra ad Ha baja
- S ja M. Ha d , R.N.
- M. Ja e D. Ha . , J.
- M. Ka . a D. Ha .
- M. A B. Ha a
- M. Lav a E. Ha e
- M. Pav Ha e
- M. Na c Ha e
- M. Ma ge Ha
- M. L ee C. He e
- M. D a M. He
- M. E. c He b
- M. V. c a He b
- M. Mav c He a
- M. Ma ga e A. He
- M. Da e e He bu
- M. S ac He e
- M. B a E. He e . g
- M. Ed v d C. H
- M. Ma . H c b

- M. Jac.e H a d
- M. Pe a H a
- M. M E. H
- M. D h H
- M. Ca e H a d
- M. Ge ad e S. H d
- M. E. abe h H a d
- Sv a ad R ge H a d
- M. Mav ee M. Hughe
- M. W. Sc Hughe
- M. J Hughe -La d
- M. De e Hv
- M. J e h Hv
- R ad Ee . H ff
- M. Jea e e la
- M. Ge l a
- M. K be l .
- B ad Debbel e
- M. T a l a
- M. Ha e l e
- M. Sha l e
- M. A e re Jac
- M. Taa Jac
- M. W a Jac
- M. Sv Jac b
- M. Ka e Jac b
- M. E a a Ja . a
- M. D h Je
- M. Kah ee Y. Je
- M. L da F. Je
- M. T ac A. Je
- M. Kah J. Je e
- M. D a Je e
- M. l abe J
- M. R e a J e
- M. Ba ba a J. J h

- M. Ea e M. J h
- M. Je a C. J h
- M. M . M. J h
- M. Sv a M. J h
- M. Hugh E. J e
- M. She . C. J e
- M. Ta J da
- M. Mac a J e
- M. Me . a A. J e h
- M. Ma A J
- M. Ka he . e Jv dd
- D. Be da Jv c
- M. Cee e Ka e b
- Pa . ca C. Ka , R.N.
- M. Th a Kea e
- M. Be e A. Kee e
- M. R b Ke e
- M. Mchae Ke e
- M. Tvd Ke . ge
- M. Se ha . e Ke h a .
- M. M a K d e
- M. T a A. K ba
- M. Da e A. K gh
- M. Sha K gh
- M. Ka . a K e h
- M. J e h H. K a
- M. Da e W. Ka e
- M. Ke h Kav he
- M. J a e M. Kav a
- M. Sa Kv a ga a
- M. R e e Kv . e
- M. Mchae Labbe
- M. Cec e T. Ladd
- M. C a e ce H. La e , J.
- M. Deb a J. La hea
- M. Jeff e La e





# Building on Excellence Campaign - Employee Donors

( include name & grade. 2005 form only )



Dr. John and Liana Brock at the Gala.

Ja . ce M. Pa . e , RN  
 M . V . g . a M. Pa . e  
 M . W . e Pa .  
 M . Deb a C. Pa  
 M . Ma . T. Pa cva  
 M . A ge . a Pa cva -B e  
 M . Pu cha Pa a a a  
 M . Ru a Pa e  
 M . A e Pa e  
 M . Sabee a Pa hu a .  
 M . Ma . a Pe a  
 M . La . A. Pe ve  
 M . Sa ce Pe e  
 M . R a ba Pe e -Na a l  
 M . Da . Pe e -Sa che  
 M . R ad Pe e  
 M . Che Ph .  
 M . Si a Ph . -C e  
 M . Ca e P. cc e .  
 M . Ma ve e P. ce . g  
 M . Ca e . a P. e e b .  
 M . Cha v a P. e ce  
 M . Sa ve P. e e  
 M . Je . fe P. e  
 M . Ma . L. P. e  
 M . Ka hee P. e uc

M . Da e e R. P. g a  
 M . R be a A. P . e  
 M . Ju d . h M. P . e  
 Fe de . c . a d Ma P v b  
 M . A be v P . aa  
 M . Sa ah J. P . P be e  
 Je a d L v e P gve  
 M . Ca a J. P a d  
 M . Ba P e  
 M . Da a P .  
 M . Hea he P . d  
 M . Ga ga P a had  
 M . J ce P a he  
 M . Ju . Pa  
 M . Te . G. P . ce  
 M . He a P e a  
 J a ha a d C. gde P v da  
 M . Lea P ve e  
 M . R ca d Que ed  
 M . Ka he . e M. Qu  
 M . Ke . M. Rad  
 R ge a d She . a Ra e  
 Lu c a E. Ra . , M.D.  
 M . Ed . Ra  
 M . Cha v a a Ra  
 M . R de . a Ra e  
 M . Sa d Ra e  
 M . D v ga Rea e  
 M . J e Re . c  
 M . Deb be Re e  
 M . Ka he . e Re e  
 M . Ma Rhea  
 M . Ge ga a a R ce  
 M . L d C. R cha d , J.  
 M . Ra d . R cha d  
 M . C a R e

M . R be R g  
 M . Da R e a  
 M . Fa c c R e a  
 M . J h D. R e a  
 M . Me . da R e a -R e  
 M . a d M . Da . d K. R bb , II  
 M . Ka he . e R b  
 M . K . R b  
 M . Rh da R b  
 M . E b R be  
 M . E . ca R d . gve  
 M . Ma . a R d . gve  
 M . Va e e R d . gve  
 M . Ju e R ge  
 M . Ye R ja  
 M . Ke e h A. R c  
 M . Sa ah R  
 M . Pa . ca D. R a  
 M . R a R a  
 M . A ge a A. R a .  
 M . Ma ve R ad  
 M . Sa da L. Rvd  
 M . Nad . e R v gge  
 M . Y e M. R v edge  
 M . Ce . a R a  
 M . E e Sa a a  
 M . O he . a l. Sa ve  
 M . Da Sa che  
 M . Ne Sa che  
 M . R be Sa che  
 M . Ja . M. Sa de  
 M . Pa Sa de  
 M . Ba ca Sa . ag  
 M . Ju d . h C. Sa . ag  
 M . Ma . a Sa . ag  
 M . Ne Sa . ag

M . Ye . Sa . ag  
 M . E . abe h M. Sav de  
 M . Ru h M. Sav de  
 M . Ge ge P. Scha c , III  
 M . A he Sche bav  
 M . Na ee . e Sche ch  
 M . D . A. Sch . d  
 M . M . che e L. Sch e  
 M . T . c a Sch v e  
 M . J h Sc a  
 M . Be e Sc  
 M . J h Sc  
 M . L . da Sc  
 M . B . a Sc . e  
 M . J e See be a  
 M . E e Seg a a  
 M . Pav a Seg a e  
 M . J ha a Seg v a  
 M . L . da Se b  
 M . E a ve Se a v  
 M . Ma . Se v eda -T e  
 M . Jeff e Se . c  
 M . J e J e Se a  
 M . D a d Sha b . , II  
 M . R be M. Sha  
 M . J A Shea  
 M . Ju d . h J. She  
 M . Da e P. She e  
 M . Ma Sh  
 See a d E e Sh  
 M . Sh e S be  
 M . Ka e S d e  
 M . Ed a d Se be  
 B ad , Pa r . a d Sa S  
 M . Ch e S  
 M . J h S

# Building on Excellence Campaign - Employee Donors

( include edge a e & g f ece ed. 2005 f e ee ca ag )

M. T h C. S ca  
 M. F a ce J. S h  
 M. Hee M. S h  
 M. Ed. h V. S e be ge  
 M. R e a e S  
 M. L da S e  
 M. G eg S e ce  
 M. V ce S e a a  
 M. She a A ee S a  
 M. S ace S a e  
 M. R a C. S. C a  
 M. Da d S. C  
 M. D a e S a h bu ch  
 M. Ka e S a h  
 M. J e S a f  
 M. M chae S a e  
 M. Che S a g  
 M. a d M. R be J. S a  
 M. Jea e e Re ha S e e  
 M. Sha e e S e e  
 M. Ru h S e a  
 Jac. S e & Fa .  
 M. M d ed S e  
 Ka h S va e, ARNP  
 M. J e h e S v a  
 M. J a S v a  
 M. Ca S v e d a  
 M. She S a  
 M. A D. S a c  
 M. J a e Tagge  
 M. M ca R. Ta a e a  
 M. Le P. Ta g  
 M. Ca Ta e  
 M. F a Ta a e  
 M. L a e Ta  
 Ka Tech, RN  
 M. Ba ba a Te bu

TGH Av a a, I c.  
 TGH Ca e Ma age e  
 TGH Hu a Re v ce  
 TGH Med. ca S aff  
 TGH Pa e Acc v  
 M. G ace Th a  
 M. J ce Th a  
 M. Ma Th a  
 M. Pegg Th  
 M. Sa ah Th e  
 M. Ph . R. Th  
 M. La T a  
 M. T. J. T e  
 M. Maga. T e -Ga c a  
 M. X va Ta  
 M. E v ge a M. T a .  
 M. Ma S. T e .  
 M. E a T. che a  
 M. J a . Tu cc  
 M. F. a Tu gade  
 M. K be U ch v a  
 M. Ta Uh  
 M. J a U de d  
 M. B a che E. U v a  
 M. J va R. Va de  
 M. Ta a Va e .  
 Ju e Va e ve a, RN, MSN  
 M. Ma a E. Va e  
 M. Ka e Va Ce af  
 R. cha d a d De e Va de We f  
 M. M chae a L  
 M. Hec Va ga  
 M. Ju e A. Va ga  
 M. Ca he e Va  
 M. R Vega  
 M. T a L. Vega  
 M. G e d Ve c

M. Na c Ve a  
 M. Mau c J. Ve be  
 M. Bea . Va e  
 M. I a Va e  
 M. E. abe h V a a  
 M. J a ce V. c e  
 M. Ca V. afa a  
 M. Ma V. e e e  
 M. R e a A. Wa de  
 M. Fa Wa e, J.  
 M. Fede c. Wa ace  
 M. L v e Wa e  
 M. S v a K. Wa e  
 M. Na c Ta Wa d  
 M. T Wa  
 M. Eff e Wea e  
 M. The e a Webb-G ff.  
 M. Che We e  
 M. Ca he e L. He d We  
 M. J a e B. We b  
 M. Ca We e a d  
 M. Te . Whee e  
 M. Che Wh e  
 M. S v a Wh e  
 M. B. dge W b  
 M. Ca h W e  
 M. Cec a W a  
 M. F d W a  
 M. Jea M. W a  
 M. J ce D. W a  
 M. Ma a W a  
 M. Na ha M. W a  
 M. Ra d D. W a  
 M. Sa d a W a  
 M. Sc R. W a  
 M. Tffa W a  
 M. Cha e W



Ross Hays and Dr. Brad Johnson show off their crystal awards following the Annual Golf Tournament.

M. R bb e W  
 M. The e a W. bu h  
 M. L a J. W  
 M. Be W he  
 M. Ca W  
 M. R ge S. W d  
 M. Ch . e M. W gh  
 M. E a M. W gh  
 M. M che W gh  
 M. Sha Ya b v gh  
 M. M chae e Y de  
 M. Ma e A. Y  
 M. Ka a E. Y e  
 M. Ca Y v g  
 M. Da e e S. Y v g  
 M. R be Y v g  
 M. S a D. Y v gb d  
 M. E e P. Zacha  
 U v a M. Za ce, RN  
 M. Ed a d M. Zeb  
 M. Sha Zega a  
 M. Y a da Z a de  
 M. Je. L e Z e a  
 M. Ka Z e  
 M. S a Z v be

ABC F. e W. e & S . .  
Ada G f  
M. R be A  
A . Mag Je e e  
A hu Ya e & S / Je e e  
M. a d M . J h l. Ba d  
The Bec G v  
Be a D a Sa  
Be ' Sea H v e  
Be Bv  
BgC Ta e  
M . Ke . e Ba cha d  
B ca B a , l c.  
B eF h G.  
Bvd , B & Be d  
Ca T v F. a ca Ad .  
C ca-C a B . g C a  
C Beach & Te . Re  
C Me M e  
The C v b a Re av a  
M . Rache C . g.  
Cu v a Affa Maga . e  
Deb a R be De . g , LLC  
Ted a d R b DeLaVe g e  
De , l c.  
The Dffe e ce  
D e D e , l c.  
Ed & Edd.e. H e ade Ice C ea  
Ed a d . P. e & T bacc Sh  
M . Ge da F. E a  
M . B b F.a  
G a de l a d Vaca .  
Ju . a d Da . e Gee a d  
M . a d M . Ch . Ha re

I C ed Thea e & Re av a  
l . gh E e . e  
JB f F . da  
JC Ne a C ga C .  
Ga a d D a K ch  
Lee R Se ' .  
Lfe e Fa . F e  
L e E e gade S ee echa e

# Facts about Tampa General Hospital (TGH)

## REGIONAL TRAUMA CENTER

Tampa General Hospital is the Level I Trauma Center. We are Florida's largest emergency department and the only Level I Trauma Center in the state. Over 100,000 patients are treated annually at the J. C. DeLoach Center for Trauma and Critical Care (JCAHO).

The Level I Trauma Center is a designated area of the hospital. It is a 24-hour unit, and the emergency department is available 24 hours a day.

## REGIONAL AEROMEDICAL TRANSPORT PROGRAM

The aeromedical transport program is a designated area of the hospital. It is a 24-hour unit, and the emergency department is available 24 hours a day.

## REGIONAL BURN CENTER

TGH is the only Level I Burn Center in Florida. We are the only hospital in the state to have a dedicated burn unit. The burn unit is a 24-hour unit, and the emergency department is available 24 hours a day. Over 129 burn patients are treated annually at the J. C. DeLoach Center for Trauma and Critical Care (JCAHO).

## TRANSPLANTATION PROGRAM

TGH is the only hospital in Florida to have a dedicated transplantation program. The program is a 24-hour unit, and the emergency department is available 24 hours a day.

From October 1, 2004 to September 30, 2005, Tampa General Hospital performed 59 heart, 13 lung, 203 adult, and 19 pediatric liver transplants, and 73 kidney transplants.

TGH is the only hospital in Florida to have a dedicated transplantation program. The program is a 24-hour unit, and the emergency department is available 24 hours a day. Over 500 heart and lung transplants are performed annually at the J. C. DeLoach Center for Trauma and Critical Care (JCAHO).

## NEONATAL INTENSIVE CARE UNIT

The Neonatal Intensive Care Unit (NICU) at TGH is a designated area of the hospital. It is a 24-hour unit, and the emergency department is available 24 hours a day.

## CENTER FOR BLOODLESS MEDICINE & SURGERY

The Center for Bloodless Medicine & Surgery is a designated area of the hospital. It is a 24-hour unit, and the emergency department is available 24 hours a day.

## CARDIAC SERVICES

TGH is the only hospital in Florida to have a dedicated cardiac services program. The program is a 24-hour unit, and the emergency department is available 24 hours a day. Over 100,000 cardiac patients are treated annually at the J. C. DeLoach Center for Trauma and Critical Care (JCAHO).

## REHABILITATION SERVICES

The Rehabilitation Services program is a designated area of the hospital. It is a 24-hour unit, and the emergency department is available 24 hours a day.

TGH is the only hospital in Florida to have a dedicated rehabilitation services program. The program is a 24-hour unit, and the emergency department is available 24 hours a day.

The Chest Pain and Stroke Center is a designated area of the hospital. It is a 24-hour unit, and the emergency department is available 24 hours a day.

The Chest Pain and Stroke Center is a designated area of the hospital. It is a 24-hour unit, and the emergency department is available 24 hours a day.

The Chest Pain and Stroke Center is a designated area of the hospital. It is a 24-hour unit, and the emergency department is available 24 hours a day. Over 100,000 chest pain and stroke patients are treated annually at the J. C. DeLoach Center for Trauma and Critical Care (JCAHO).

# PhysicianFinder Physician Referral Service

## 1-800-822-DOCS

For more information on any of the TGH services mentioned, please contact TGH Marketing at (813) 844-4702.

Mailing Address: P.O. Box 1289 • Tampa, Florida 33601

Location: 2 Columbia Drive • Tampa, Florida 33606 [www.tgh.org](http://www.tgh.org)

### CHILD BIRTH CENTER

Pe a a educa. ca e, e bab ca e, a d h gh. b e ca e ce a e a a a be.  
Fee. fa ca ea a e g e a e he a d cha ge.

### CHILDREN'S MEDICAL CENTER

S e ca e ce. cvd e a e bed ed a .c. e . e ca e v ., ed a .c v ge,  
ed a .c d a ., ed a .c e hab. a. a d ce . fed ch. d fe e ca. .

W. h. a a d ch, h v. a de g ed w f .d.

A R ad McD ad H v e. he TGH ca v e e fa .e f v ed a .c a e .

### DIGESTIVE DISORDERS CENTER

TGH. a e fe a ce e f v. e a d c e d de f h e d ge . e e . M e ha  
1,000 e gh v ge e ha e bee e f ed a Ta a Ge e a H . a . ce 1998.

Ov v g ca d ge . ed de a d ga . e . a ca ce ga a e a ba a .c  
e . ce ha e e ce ed d ea e ec f c ce . fca. f he J. C . .

Acc ed a. f Hea h ca e O ga . a. (JCAHO).

### INFECTIOUS DISEASE SERVICES

I add. . d g a e f he a a e ca e, h e . ce . de e ca. ed a . g,  
c v a. a d c . v g educa. . . fec. v d ea e ca e f he a h fe . a . T . c  
ad de be a . g f b - e ., e e g g a h ge , a d bac e a e . a ce.

### NEUROSCIENCES SERVICES

TGH . de a f v a ge f e v v g ca e . ce . cvd g : ce eb a cv a v ge,  
v g ca e . e ea e, . e a d . a c d v ge, a d ba v v ge . Se . ce  
a . cvd e d ag . a d ea e f a e . h e v g ca . w . e a d . a e ,

. cvd g e, e . e a d e e d de v ch a Pa . . a d H v . g .  
d ea e . Ov e . e ga ha e ce ed d ea e ec f c ce . fca. f he J. C . .

C . . . Acc ed a. f Hea h ca e O ga . a. (JCAHO).

### SLEEP DISORDERS CENTER

Ta a Ge e a H . a ' See D. de Ce e . he f . he c v ha e  
e ce ed b h acc ed a. b he A e . ca Acade . e f See Med . c e (AASM) a d  
d ea e ec f c ce . fca. f he J. C . . . Acc ed a. f Hea h ca e  
O ga . a. (JCAHO).

Th ce e . de e a va. a d f - v ca e f ch de a d ad v . ha a e f  
ee - e a ed d de v ch a ee a ea, a ce , a d . a.

### ORTHOPEDIC SERVICES

A v d c . a ea f h . ca v ed b v e, h . ca a . a  
a d h . ca a d cc v a. a he a . . de a e ace e f fa ed l .

. cvd g h ., ee, h v de a d eb . TGH a a ed he U.S. Ne & W ' d  
Re . . f A e . ca' Be H . a 2005. h v ed . c . Ov c e h v ed c

e . ce a d h ed . c l . e ace e ga ha e ce ed d ea e ec f c  
ce . fca. f he J. C . . . Acc ed a. f Hea h ca e O ga . a. (JCAHO).

# Important Phone Numbers

Main Switchboard (813) 844-7000

Patient Information (813) 844-7443

Rehabilitation Center (813) 844-7700

PhysicianFinder Physician Referral Service  
1-800-822-DOCS

Family Care Center Kennedy  
2501 W. Kennedy Boulevard  
(813) 844-1385

Family Care Center 30th Street  
5802 N. 30th Street (813) 236-5300

Genesis (OB/GYN) at 30th Street  
5802 N. 30th Street (813) 236-5100

Pediatric Clinic at 30th Street  
5802 N. 30th Street (813) 236-5100

The Specialty Center at 30th Street  
5802 N. 30th Street (813) 236-5200

KIDCare (daycare for sick children)  
(813) 844-7192

Florida Poison Information Center  
1-800-222-1222

MORE HEALTH, Inc. (school and  
community health education)  
(813) 258-6366

## Governance

Tampa General Hospital - a not-for-profit corporation, registered in the State of Florida.

## Accreditations

Joint Commission Accredited for Healthcare Organization (JCAHO)  
Commission on Accreditation of Rehabilitation Facilities  
Magnet Society of International Nurses Credentialing Center  
JCAHO designated for accreditation

## Administrator

Ronald A. Hoff,  
President  
Chief Executive Officer

## Licensed Beds

818 acute care and 59 rehabilitation beds

## Patients (FY 2004-2005)

Inpatient Discharge 36,819 (inpatient)  
Births 4,670  
Emergency Care 66,355  
Advanced Care 54,497  
Pediatric Emergency 11,858

## Surgical Suites – (36 total)

Major 17 (cardiovascular, orthopedic)  
Minor 1  
Cardiac 6  
OB/GYN 4  
Oncology 8

## Medical School

TGH is affiliated with the University of South Florida College of Medicine and the Tampa General Hospital Health Services.

Approximately 1,100 cardiovascular and general medicine residents have 250 beds at the University of South Florida College of Medicine and the Tampa General Hospital Health Services.

## Foundation

The Tampa General Hospital Foundation is a 501(c)(3) not-for-profit organization. Tampa General Hospital is a member of the Tampa General Hospital Foundation. For more information, call (813) 844-7250. Email: [info@tghf.org](mailto:info@tghf.org)





Trusted for ou